

## 2 Day Kangaroo Is. Self Drive



### SUGGESTED HIGHLIGHTS:

- Self drive adventure ▪ Vivonne Bay ▪ Seal Bay
- Flinders Chase National Park ▪ Remarkable Rocks
- Admirals Arch ▪ Wildlife viewing
- Picturesque coastal scenery

Kangaroo Island offers a holiday that can be full of excitement and adventure, or as relaxing as you choose. Drive and explore the island at your own leisure with the following suggested itinerary and stay in pre-booked accommodation.

**Day 1: Adelaide to Kangaroo Island** Travel from Adelaide to Cape Jervis via coach then board the SeaLink ferry for a 45 minute journey to Penneshaw. Drive into Pennington Bay, a fantastic photo opportunity. Stop off at Clifford's Honey Farm for honey tasting and honey ice-cream. Continue to Seal Bay for a guided walk to view Australian sea lions in their natural environment (own expense). For the more adventurous, stop off at Little Sahara to try sand boarding, or take a walk up the dune to experience the views from the top. Continue to Kelly Hill Caves Conservation Park and take a guided tour in the caves or try adventure caving (own expense). This evening settle into your accommodation, choice of hotel.

**Day 2: Kangaroo Island to Adelaide** Head to Flinders Chase National Park to visit Remarkable Rocks, historic Weirs Cove, the stalactite fringed Admirals Arch and the population of New Zealand fur seals. Time permitting continue onto Kingscote to call in on some of the local producers on the island, like Island Pure Sheep Dairy & Cheese Factory or drop by KI Spirits, which use local and native produce to flavour their boutique liqueurs. Take a walk along the coast or visit Emu Bay Lavender Farm to sample lavender ice-cream. Make your way to the Penneshaw Wharf to board the SeaLink ferry and coach transfer back to Adelaide. (B)

### INCLUDES:

- Return SeaLink Coach and ferry transfers from Adelaide to Kangaroo Island and 2 days car rental (Car Rental option)
- Return vehicular ferry transfer (Own Car option)
- 1 nights accommodation
- Meals as indicated (B = breakfast) – except Kangaroo Island Wilderness Retreat option

**Operates:** Daily from Adelaide

**Concludes:** Adelaide

	OWN CAR		CAR RENTAL	
	ADULT	CHILD	ADULT	CHILD
	TWIN SHARE	3-14 YEARS	TWIN SHARE	3-14 YEARS
Kangaroo Island Seafront Resort	\$234	\$74	\$312	\$90
All Seasons Kangaroo Island Lodge	\$238	\$78	\$316	\$94
Kangaroo Island Wilderness Retreat	\$244	\$74	\$322	\$90
Aurora Ozone Hotel	\$251	\$82	\$329	\$98

Car Rental pick up from Adelaide, triple share and sole use prices and extra night prices also available.

KANGAROO ISLAND SEALINK

KANADL

## 2 Day Kangaroo Is. Adventure



### HIGHLIGHTS:

- Sheep shearing
- Emu Ridge Eucalyptus Distillery
- Seal Bay guided walk ▪ Little Sahara
- Vivonne Bay ▪ Nocturnal penguin walk
- Flinders Chase National Park
- Remarkable Rocks
- Admirals Arch ▪ Cape du Couedic
- Hanson Bay Koala Sanctuary
- Wildlife viewing
- Adventure activities
- Small group touring

**Day 1: Adelaide to Kangaroo Island** A scenic coach trip from Adelaide to Cape Jervis to board the SeaLink ferry to Kangaroo Island. First stop is Rob's Shearing to learn how to shear a sheep before continuing to Emu Ridge Eucalyptus Distillery. After lunch, visit Seal Bay for a guided walk to see Australian sea lions. Nearby are the white sand dunes of Little Sahara, where some fun is to be had on the sand boards. Continue to the overnight accommodation at stunning Vivonne Bay with free time for kayaking, boogie boarding, surfing, swimming and bush walking. After a barbecue dinner, witness the arrival of Little penguins. Back at the accommodation, enjoy a nocturnal wildlife walk. (LD)

**Day 2: Kangaroo Island to Adelaide** After a hearty breakfast, head to Flinders Chase National Park. Arrive at Remarkable Rocks and marvel at the huge granite boulders. Enjoy the spectacular coast and seascapes; continue to Admirals Arch at Cape du Couedic to watch the resident New Zealand fur seals frolic in the ocean or sunbake on the rocks. After lunch visit stunning Pennington Bay before heading to Penneshaw for the ferry and coach transfer for Adelaide. Time permitting, also visit Prospect Hill, Ironstone Hill, north coast beaches (weather permitting) and Kelly Hill Caves. (BL)

### INCLUDES:

- 1 nights accommodation with share facilities
- Expert guide with commentary
- Meals as indicated (B = breakfast, L = lunch, D = dinner)
- Return ferry transfers and coach transfers from selected Adelaide accommodation

**Departs:** From Adelaide at 6:45am  
Mon, Wed, Thu, Sat (Apr, Nov)  
Mon, Thu, Sat (May – Oct)  
Daily (Dec – Mar)

**Returns:** 10:40pm

### PRICE PER PERSON:

	ADULT	CHILD
		3-14 YEARS
Dormitory share	\$399	\$355
Twin share	\$417	N/A
Sole use	\$481	N/A

One way flight option Kangaroo Island to Adelaide also available.

KANGAROO ISLAND ODYSSEYS

KIOKGC

## 2 Day Kangaroo Is. Coast to Coast



### HIGHLIGHTS:

- Abundant native wildlife ▪ Remarkable Rocks
- Visit Kangaroo Island industries
- Walk amongst sea lions at Seal Bay ▪ Admirals Arch
- See fur seals at Cape du Couedic ▪ Vivonne Bay
- Flinders Chase National Park ▪ Pelican feeding
- Kelly Hill Caves ▪ Parndana Wildlife Park

**Day 1: Adelaide to Kangaroo Island** Travel from Adelaide on a scenic coach trip through the Fleurieu Peninsula to Cape Jervis. Board the SeaLink Ferry for a 45 minute crossing to Kangaroo Island. First stop is the Emu Ridge Eucalyptus Distillery. After a two course lunch at Vivonne Bay Bistro, enjoy a fascinating Birds of Prey free-flight demonstration. At Seal Bay, walk along the beach with a guide amongst a breeding colony of Australian sea lions. Continue to the Parndana Wildlife Park and feed native kangaroos or take a guided tour of this wildlife and bird park. Finish the day with a visit to Island Pure Sheep Dairy and observe sheep milking and sample delicious yoghurts and cheeses. Transfer back to your choice of accommodation for an optional evening penguin tour (operates seasonally, own expense). (L)

**Day 2: Kangaroo Island to Adelaide** Visit Clifford's Honey Farm to enjoy an informative talk, tastings and an opportunity to sample honey ice-cream. At Kelly Hill Caves enjoy a guided tour deep into the cave to view the unique limestone formations. After a two course lunch, head on to Flinders Chase National Park, renowned as a sanctuary for native Australian animals including kangaroos, wallabies, koalas and echidnas. The tour takes you to the rugged southern coastline to Remarkable Rocks and Admirals Arch with great photographic opportunities and sea views. At Admirals Arch see the rugged cliff face and spectacular arch, a natural nursery and safe haven for playful New Zealand fur seals. After a short stop at the Flinders Chase Visitor Centre, travel back to Kingscote to watch the pelican feeding before returning to Adelaide. (BL)

### INCLUDES:

- 1 nights accommodation
- Expert guide with commentary
- Meals as indicated (B = breakfast, L = lunch)
- Entry fees
- Return ferry transfers and coach transfers from selected Adelaide accommodation

**Departs:** Daily from Adelaide at 6:45am

**Returns:** 10:40pm

### PRICE PER PERSON:

	ADULT	ADULT	CHILD
	TWIN SHARE	SOLE USE	3-14 YEARS
Kangaroo Island Seafront	\$481	\$591	\$291
All Seasons Kangaroo Island Lodge	\$485	\$575	\$295
Aurora Ozone Hotel	\$498	\$593	\$299

Extra night and triple share prices also available.

KANGAROO ISLAND SEALINK

KANADL

# Extended Tours

## 2 Day Kangaroo Island Odysseys



**HIGHLIGHTS:**

- Seal Bay guided walk
- See wildlife in their own habitat
- Flinders Chase National Park
- See New Zealand fur seals at Admirals Arch
- Cape du Couedic ▪ Remarkable Rocks
- Kelly Hill Conservation Park ▪ Small group touring

**Day 1: Adelaide to Kangaroo Island** Tour through several differing island habitats and see wildlife in its natural environment. As you travel the island, keep an eye out for echidnas, wallabies, reptiles and wildflowers. At spectacular Seal Bay your guide will escort you along the beach amongst a colony of Australian sea lions. See the sea lions as they bask on the beach or among the sand dunes. Enter an exclusive Heritage Listed natural bush property to enjoy a delicious gourmet picnic lunch with complimentary wine. Travel through the island's interior, keeping an eye out for koalas and echidnas. Watch for the Tammar wallaby and as the day draws to a close, see kangaroos begin grazing on the open pastures. Overnight on Kangaroo Island, choice of hotel. (L)

**Day 2: Kangaroo Island to Adelaide** Travel to the western section of the island and discover the remarkable Flinders Chase National Park, one of the oldest and most important national parks in South Australia and home to a variety of fauna and flora unique to Kangaroo Island. See at close range some of the 10,000 New Zealand fur seals in their colony at Cape du Couedic and discover the unique Remarkable Rocks – large granite boulders balanced dramatically on the cliff edge. At Admiral's Arch see the geological formation created by the forces of nature. Enjoy a gourmet picnic lunch with wine served in a secluded bush setting. During the day koalas can be observed. Visit the Kelly Hill Conservation Park to see kangaroos and other native wildlife emerge from the safety of the bush to graze on the open plains. Your tour concludes in time for a ferry and coach return to Adelaide. (L)

**INCLUDES:**

- 1 nights accommodation
- Expert guide with commentary ▪ Entry fees
- Meals as indicated (L = lunch) – Deluxe option also includes breakfast and dinner
- Return ferry and coach transfers from selected Adelaide accommodation

**Departs:** Daily from Adelaide at 6:45am

**Returns:** 10:40pm

PRICE PER PERSON:	ADULT TWIN SHARE	ADULT SOLE USE	CHILD 3-14 YEARS
Standard	\$1075	\$1170	\$913
Superior	\$1095	\$1220	\$930
Deluxe	\$1330	\$1390	\$1129

Triple share prices and return or one way flight options from Adelaide also available.

KANGAROO ISLAND ODYSSEYS

KIOKGC

## 3 Day Great Ocean Road



**HIGHLIGHTS:**

- Victor Harbor ▪ Granite Island Walk
- Great Ocean Road ▪ Twelve Apostles
- Grampians National Park ▪ Small group tour

**Day 1: Adelaide to Victor Harbor and Naracoorte**

See some of the best of South Australia. Spend the morning discovering Victor Harbor's attractions – Granite Island Walk, Horse Drawn Carriage and the Australian Wildlife Park. Get up close to koalas, pat and feed friendly kangaroos. In winter you may see Southern Right whales metres from the beach. Continue on across the great Murray River travelling through the Limestone Coast region of South Australia to Naracoorte for your overnight accommodation. Mid December to late March, enjoy free swimming at a local pool. (D)

**Day 2: Naracoorte to The Grampians and Warrnambool**

Head across the South Australian border to Victoria and onto The Grampians, Victoria's largest national park. The Grampians offer a great selection of walks, lookouts, breathtaking views over the ranges and plenty of Australian native wildlife. Hike up one of the majestic mountains for stunning views overlooking the Grampians, visit the majestic MacKenzie Falls and enjoy breathtaking views over the magnificent ranges from Reeds Lookout. After a full day of activity, travel south down to the start of the Great Ocean Road to the regional coastal city of Warrnambool for your overnight accommodation. Take an evening stroll along the beach boardwalk and watch the sunset over the ocean. (BD)

**Day 3: Great Ocean Road to Melbourne** Journey along the stunning Great Ocean Road, one of Australia's best scenic coastal routes. Wonder at the massive rock formations cut out by the sea and beautiful beaches. Learn about the history of this rugged limestone coast, the tragic shipwreck at Loch Ard Gorge and the awesome views of the Twelve Apostles. An optional scenic helicopter flight over the Twelve Apostles and stunning coastline is available (own expense). Continue travelling through the seaside towns before arriving late afternoon into Melbourne. (B)

**INCLUDES:**

- 2 nights motel accommodation
- Meals as indicated (B = breakfast, D = dinner)
- National park entry fees

**Departs:** From Adelaide Central Bus Station, 85 Franklin Street Mon and Thu at 7:30am

**Returns:** Victorian Arts Centre, Melbourne at 5pm

PRICE PER PERSON:	1 APR – 19 DEC 11, 1 FEB – 31 MAR 12	20 DEC 11 – 31 JAN 12
Adult twin share	\$525	\$550
Adult sole use	\$700	\$725
Child 8-14 years	\$350	\$350

Not suitable for children under 8 years.

GOIN SOUTH TOURS

GOIADL

## 3 Day Barossa & Flinders Ranges



**HIGHLIGHTS:**

- Cellar door wine tasting in the Barossa and Clare Valley
- Flinders Ranges guided touring
- Wilpena Pound, Arkaroo Rock and lunch at the historic Prairie Hotel

**Day 1: Adelaide to The Barossa and Clare Valley**

Travel to Australia's premium wine producing region, the Barossa, arriving at the Jacob's Creek Visitor Centre. Journey through the patchwork of vineyards, observe the architecture of the early German settlements and enjoy wine tasting at Peter Lehmann's. Saltram Estate offers a warm, friendly atmosphere for lunch. Select from gourmet tasting platters served with specifically selected Saltram wines. Travel onwards to the Clare Valley famous for its Riesling and stop off at Sevenhill Cellars. See the underground cellars, incredible church and crypt and retreat house. Overnight at Clare Country Club. (LD)

**Day 2: Clare Valley to Flinders Ranges**

This morning the legendary lilac haze of the Flinders Ranges looms ever closer in the distance. The Flinders Ranges is home to a vast number of native animals and birds, which abound amongst the gum trees and on the steep, ragged slopes of the gorges. Visit Arkaroo Rock and other significant indigenous art locations. The paintings at these sites are commonly dated around 6,000 years old. Overnight at Wilpena Pound Resort. (BLD)

**Day 3: Wilpena Pound to Adelaide**

Early morning take an optional scenic flight over the Wilpena Pound landscape before breakfast (own expense). Journey through the Bunyeroo and Brachina Gorges, over hills and ridges, along riverbeds and through gullies. Lunch is at the historic Prairie Hotel, an outback pub situated along the original Old Ghan Railway Line. With an international reputation for its cuisine, in particular, its feral food menu including kangaroo and emu. The journey back to Adelaide gives you the time to relax and unwind before being transferred to your hotel. (BL)

**INCLUDES:**

- 2 nights accommodation
- Wine tasting in the Barossa and Clare Valley
- Meals as indicated (B = breakfast, L = lunch, D = dinner)
- Return transfers from Adelaide accommodation

**Departs:** Tue, Fri from Adelaide at 8:30am

**Returns:** 6:30pm

PRICE PER PERSON:	
Adult triple share	\$1139
Adult twin share	\$1195
Adult sole use	\$1378
Child 3-14 years	\$956

ADELAIDE SIGHTSEEING

ADEADL

3 Day Flinders & Outback Safari



**HIGHLIGHTS:**

- Wilpena Pound
- Wildlife viewing
- Aboriginal rock art sites and culture
- Brachina and Bunyeroo Gorges
- Clare Valley
- Small group eco adventure

**Day 1: Adelaide to Wilpena**

Head north via Port Germein to Alligator Gorge National Park for lunch and spectacular views of the mountains and Spencer Gulf. Venture towards Port Augusta and through the picturesque Pichi Richi Pass to Quorn, the start of the original Ghan Railway. Explore the deserted Willochra Plain and stop at the Yourambulla Caves to view Aboriginal art work. Enjoy a hearty meal this evening around the campfire. Accommodation for the next two nights at Rawnsley Park Station. (LD)

**Day 2: Wilpena**

This morning enjoy the view of iconic Wilpena Pound. Explore the unique area that surrounds the Pound and visit the Bunyeroo and Brachina Gorges. View some of the oldest rock formations in the world and search for wildlife including kangaroos, emus and Wedge Tailed eagles. Travel back to Rawnsley Park via the spectacular Moralana Scenic Drive, following the south-western wall of Wilpena Pound. (BLD)

**Day 3: Wilpena to Adelaide**

Travel to Melrose, the oldest town in the Flinders Ranges, to see historic buildings such as Bluey Blundstone's Blacksmith Shop. On the return to Adelaide, experience one of the best wine regions in South Australia, the Clare Valley. Taste fine local wines and produce of the region. (BL)

**INCLUDES:**

- 2 nights accommodation
- Meals as indicated (B = breakfast, L = lunch, D = dinner)
- Air-conditioned comfortable off-road vehicle

**Departs:** Fri from Adelaide Central Bus Station, 85 Franklin Street at 7am

**Returns:** 5pm

**PRICE PER PERSON:**

	ADULT TWIN SHARE	ADULT SOLE USE	CHILD 7-14 YEARS
Camping	\$495	\$495	\$495
Bunkhouse	\$595	\$595	\$595
Ensuite Cabin	\$695	\$770	\$695
Luxury Eco Villa	\$895	\$1275	\$895

Camping and Bunkhouse options have shared facilities. Not suitable for children under 7 years. Sleeping bag hire also available.

HEADING BUSH ADVENTURES HEASAU

3 Day Flinders Ranges Tour



**HIGHLIGHTS:**

- Wadlata Outback Centre
- Kanyaka ruins
- Wilpena Pound
- Brachina Gorge
- Iconic Prairie Hotel
- Aboriginal rock art sites
- Bushwalking
- Small group personalised 4WD touring

**Day 1: Adelaide, Port Augusta to Wilpena**

Spend three days 4WD touring the magnificent Flinders Ranges. Learn about the ancient and geological history of the region, enjoy bush walking through spectacular untouched scenery. Depart Adelaide for the Wilpena Pound Resort, travelling via Port Pirie, Port Germein and Port Augusta. At Port Augusta, visit the Wadlata Outback Centre to learn about the origins of the Flinders Ranges, the Aboriginal Dreaming, European settlement, explorers, and much more. After lunch continue towards Wilpena Pound, travelling via Quorn and Hawker. From Hawker visit the Kanyaka Ruins and Death Rock. For the energetic, enjoy a climb to the Yourambulla Caves to see Aboriginal rock paintings. Accommodation for the next two nights at Wilpena Pound Resort. (D)

**Day 2: Flinders Ranges National Park**

After breakfast enjoy a peaceful bush walk to Wangarra Lookouts and the Hill Homestead, followed by an optional visit to Sacred Canyon and Arkaroo Rock, which are major Aboriginal art sites. Travel the geological trail through the Brachina Gorge. This gorge traces the geological history of the area for hundreds of million of years. The next stop is the Prairie Hotel at Parachilna where you can sample some Aussie tucker. Continue onto Blinman before returning to Wilpena. (BD)

**Day 3: Flinders Ranges to Adelaide**

Depart Wilpena Pound Resort to start the return journey to Adelaide, travelling via Hawker and Quorn. Journey through the Southern Flinders Ranges to Wilmington then on to Adelaide via the Germein Gorge. (B)

**INCLUDES:**

- 2 nights accommodation
- Entry to Wadlata Outback Centre
- Morning and afternoon teas
- Meals as indicated (B = breakfast, D = dinner)
- Return transfers from Adelaide or Port Augusta accommodation

**Departs:** Daily (on request) from Adelaide at 7:30am

**Returns:** 6pm

**PRICE PER PERSON:**

Adult twin share \$1550  
Child prices on application.

JUST CRUISIN 4WD TOURS JCRADL

4 Day Lake Eyre & Outback



**HIGHLIGHTS:**

- Flinders Ranges
- Wilpena Pound
- Clare Valley
- Oodnadatta Track
- Scenic flight over Lake Eyre
- Spencer Gulf Cruise
- Small group touring

**Day 1: Adelaide to Flinders Ranges**

Head north to Port Wakefield and onto the southern Flinders Ranges with its abundant wildlife and spectacular scenery. Stop at the picturesque town of Quorn, the site where many Australian outback movies have been filmed. Cross the outback terrain of the Willochra Plains to the Yourambulla Caves and view 8,000 year old Aboriginal art. Arrive at Rawnsley Park Station for dinner around the campfire and overnight accommodation. (LD)

**Day 2: Flinders Ranges to Marree**

After breakfast, explore the famous Bunyeroo and Brachina Gorges – known as the Corridors of Time. See rare wallabies and ancient 600 million year old fossils. Visit the iconic Prairie Hotel for lunch, then travel along the remote Oodnadatta Track to Marree, the historic outback town and start of the famous Birdsville Track. This afternoon enjoy a two hour flight over Lake Eyre and Cooper Creek. Overnight at Marree. (BLD)

**Day 3: Lake Eyre to Port Augusta**

Follow the Old Ghan Railway through spectacular outback scenery to Lake Eyre and walk onto the salt lake, 11 metres below sea level. Meander along the western side of the Flinders Ranges watching the colours change over the mountains as the sun slowly sinks. Arrive at Port Augusta for your overnight accommodation. (BLD)

**Day 4: Port Augusta to Adelaide**

Enjoy a breakfast cruise with breathtaking views over the Flinders Ranges. Marvel at the abundance of bird life and playful dolphins. Head south and see the mountain ranges lifting up from the spectacular deserts. Visit the historic Stone Hut Bakery for lunch and enjoy some wine tasting at Clare Valley before returning to Adelaide. (BL)

**INCLUDES:**

- 3 nights accommodation
- All camping equipment
- Two hour scenic Lake Eyre flight
- Spencer Gulf breakfast cruise
- Wine tasting
- Meals as indicated (B = breakfast, L = lunch, D = dinner)

**Departs:** Mon and selected Wed from Adelaide Central Bus Station, 85 Franklin Street at 7am

**Returns:** 6pm

**PRICE PER PERSON:**

	ADULT TWIN SHARE	ADULT SOLE USE	CHILD 10-14 YEARS
Camping	\$1495	\$1495	\$1495
Cabin	\$1695	\$1895	\$1695

Not suitable for children under 10 years. Sleeping bag hire also available.

HEADING BUSH ADVENTURES HEASAU

# Extended Tours

## 6 Day Barossa, Flinders Ranges and Kangaroo Island



**HIGHLIGHTS:**

- Barossa and Clare Valley ■ Wine tasting
- Wilpena Pound ■ Parachilna ■ Quorn
- Kelly Hill Caves ■ Flinders Chase National Park
- Little Sahara ■ Seal Bay

**Day 1: Adelaide to The Barossa and Clare Valley**  
Journey from Adelaide through historic towns to Jacob's Creek Visitor Centre in the Barossa for a guided tour and wine tasting. Enjoy gourmet tasting platters and wines at Saltrams Wines and walk through the vineyards at Peter Lehmann's to learn about the wine making process. Next head to the Clare Valley, famous for its Riesling, stopping at Sevenhill Cellars for a guided tour and wine tasting. Overnight at Clare Country Club. (LD)

**Day 2: Clare to Flinders Ranges** Travel to the heart of the Flinders through vast sheep station country. Break for lunch in the historic township of Quorn, the home of the Pichi Richi Railway and the site of many Australian made films. Visit indigenous art locations and see paintings at sites dating back 6,000 years and rock engravings thought to be much older. Tonight, stay at the Wilpena Pound Resort situated at the entrance to Wilpena Pound, surrounded by a natural bushland and abundant wildlife. (BLD)

**Day 3: Wilpena Pound to Adelaide** This morning take an optional scenic flight over Wilpena Pound (own expense) before journeying to the Bunyeroo, Brachina and Parachilna Gorges. Stop for lunch at the Prairie Hotel, an historic 'outback pub' situated along the original Old Ghan Railway Line at Parachilna, known internationally for its feral produce cuisine including kangaroo and emu. Continue to Adelaide for your overnight accommodation. (BL)

**Day 4: Adelaide to Kangaroo Island** Depart Adelaide and travel through the Fleurieu Peninsula, arriving at Cape Jervis to board the SeaLink ferry to Penneshaw. Overnight at Kangaroo Island.

**Day 5: Kangaroo Island** A haven for wildlife, keep an eye out for echidnas, wallabies, reptiles as wildflowers as you travel through the island. Enjoy a guided walk along the beach at Seal Bay, amongst a colony of Australian sea lions. Hear them sigh and watch them at play. After a picnic lunch at an exclusive bush property, explore the spectacular beaches of the north coast and take a bush walk and keep a lookout for wildlife. Overnight accommodation at a private bush property. (L)

**Day 6: Kangaroo Island to Adelaide** Discover Flinders Chase National Park, home to a variety of fauna and flora unique to Kangaroo Island. Search for kangaroos, wallabies and birdlife. See at close range some of the 10,000 New Zealand fur seals at Cape du Couedic and visit the large granite rock boulders at Remarkable Rocks. See the natural geological formation at Admirals Arch and admire the Cape du Couedic Lighthouse. After a picnic lunch, visit the Kelly Hill Conservation Park for wildlife viewing and continue to the white sandy beaches of Vivonne Bay. Return to Penneshaw and depart for Adelaide. (L)

**INCLUDES:**

- 5 nights accommodation
- Meals as indicated (B = breakfast, L = lunch, D = dinner)
- Return transfers from Adelaide accommodation

**Departs:** Tue, Fri from Adelaide at 8:30am

**Returns:** 10:40pm

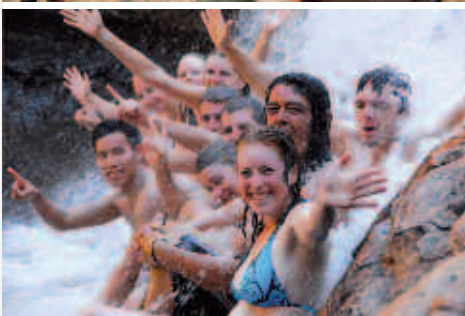
**PRICE PER PERSON:**

Adult triple share	\$2405
Adult twin share	\$2538
Adult sole use	\$3069
Child 5-12 years	\$2044

AUSTRALIAN PINNACLE TOURS

APIPER

## 6 Day Adelaide to Alice Springs Rock Patrol



**HIGHLIGHTS:**

- Coober Pedy
- Opal fossicking
- Uluru sunset and sunrise
- Kata Tjuta
- Kings Creek Station
- Kings Canyon

**Day 1: Adelaide to Coober Pedy**  
Your tour starts early, heading north from Adelaide to the outback. Witness incredible changing landscapes, and see kangaroos, emus, eagles, road trains and genuine bush characters. With stops along the way, relax in air-conditioned comfort and settle in a while cruising the highway to Coober Pedy, arriving around 6pm. This evening sleep underground – a unique experience! (LD)

**Day 2: Coober Pedy**  
Spend the morning exploring Coober Pedy, the opal capital of the world and a landscape which looks a lot like Mars. Try 'noodling' or fossicking for opals or visit an opal shop. Return to your accommodation for lunch at 1pm. Take a tour of the opal mine later in the afternoon and view the outback stars by night. Sleep in swags under the stars for the next four nights. (BLD)

**Day 3: Coober Pedy to Uluru**  
Head towards Uluru in good shape to set up camp and to witness an unforgettable Uluru sunset. Nothing really prepares you for the awesome sight of 'The Rock'. (BLD)

**Day 4: Uluru and Kata Tjuta**  
Rise early for breakfast and enjoy a day exploring Kata Tjuta (The Olgas). See the magical domes and hike the majestic Valley of the Winds with its incredibly ancient rock formations. Return to camp for the remainder of the day soaking up the magic of Uluru at leisure. (BLD)

**Day 5: Uluru to Kings Creek Station**  
After a hearty and delicious breakfast, enjoy a walk around the base of Uluru and spend time learning about the Aboriginal people at the Cultural Centre. Lunch is served at the campground before a journey to Kings Creek Station. (BLD)

**Day 6: Kings Canyon to Alice Springs**  
Walk Watarrka (Kings Canyon) to experience the fantastic views of the gorge, its huge sandstone walls and the immense canyon floor. An easier walk along the canyon floor is available. Explore the domed formation of the 'Lost City' and the lush gorge and cool waters of the Garden of Eden. After lunch, continue to Alice Springs. (BL)

**INCLUDES:**

- 5 nights accommodation
- Uluru sunrise and sunset
- Guided Uluru Base Walk
- Uluru-Kata Tjuta Cultural Centre
- Kata Tjuta Valley of the Winds Walk
- Guided Kings Canyon Rim Walk
- Meals as indicated (B = breakfast, L = lunch, D = dinner)
- National park entry fee
- Return transfers from accommodation

**Departs:** From Adelaide at 6am  
Wed (Jun – Sep)  
Wed, Sat (Oct – May)

**Returns:** Alice Springs at 7pm

**PRICE:**

Adult	\$695
Child 4-14 years	\$621

Not suitable for children under 4 years. Sleeping bag hire also available.

GROOVY GRAPE GETAWAYS

GROADL

## 10 Day Adelaide to Alice Springs 4WD Expedition



### HIGHLIGHTS:

- Flinders Ranges ■ Oodnadatta Track ■ Coober Pedy
- Lake Eyre ■ Simpson Desert
- Uluru (Ayers Rock) ■ Kata Tjuta (Olgas)
- Camel safari ■ Kings Canyon
- West MacDonnell Ranges ■ 4WD camping safari
- Experience the 'Real Outback' of Australia

**Day 1: Adelaide to Flinders Ranges** Travel to one of the oldest mountain ranges on earth, the Flinders Ranges. Walk through Alligator Gorge National Park for spectacular views. Travel through the Pichi Richi Pass to the historic township of Quorn, the start of the original Ghan Railway. Explore the area on a camel before returning to camp. Tonight be joined by local Aboriginal elders and learn about their culture and history. Your accommodation for the next nine nights will be in swags under the starry night sky. (LD)

**Day 2: Wilpena Pound** Visit the Aboriginal art site at Yourambulla Caves. Venture into Wilpena Pound for a bush walk and enjoy magnificent views. Drive along the northern side of Wilpena through the famous Bunyeroo and Brachina Gorges to spot wildlife and pass through 130 million years of geological history. (BLD)

**Day 3: Oodnadatta Track** Leave the rugged mountain scenery and head north into the outback. Hit the famous

Oodnadatta Track and follow the historic cameleer route and the Old Ghan Railway. Visit the Arabunna Aboriginal Centre at Marree to see Aboriginal art and weapons, culture and local history. Cross the Dingo Fence and on to Lake Eyre South and cool off in a thermal waterhole. Enjoy a cool beer at the famous outback pub at William Creek and set up camp on the world's largest cattle station. (BLD)

**Day 4: William Creek to Coober Pedy** Head into Coober Pedy, the opal capital of the world. Go underground and learn the techniques of mining and production before heading on to the Painted and Simpson Deserts. Set up camp and watch a spectacular outback sunset. (BLD)

**Day 5: Simpson Desert** Wander through the old railway town of Oodnadatta, then into the Simpson Desert to perhaps deliver mail and provisions to the remote cattle stations. 4WD over the red sand dunes of this spectacular desert and watch out for wild camels, horses, dingoes and Wedge Tail eagles. Enjoy lunch and a swim at Eringa Waters before arriving at the campsite. (BLD)

**Day 6: Simpson Desert to Uluru** Head to Finke, a traditional Aboriginal community to meet local Aboriginal people. Journey past Lamberts Centre, the geographical centre of Australia. Arrive in time for a spectacular sunset over the spiritual monolith of Uluru, home of the traditional custodians, the Anangu people. (BLD)

**Day 7: Uluru** This morning watch the sunrise over Uluru and take a guided walk around the rock and learn of its spiritual importance to the Aboriginal people. Continue to the Cultural Centre for lunch and listen to stories of the Anangu. (BLD)

**Day 8: Uluru to Kata Tjuta** Head to the spectacular and ancient rock formations of Kata Tjuta. Learn about bush tucker and photograph beautiful desert scenery. After lunch continue towards Watarrka National Park and set up camp in the red sand hills protected by desert oak trees. (BLD)

**Day 9: Kings Canyon** Explore Kings Canyon and trek to the Amphitheatre and The Lost City, or swim in the Garden of Eden waterhole. This afternoon gaze over the huge comet crater of Gosse Bluff. Time permitting, visit Hermannsburg and Palm Valley. Roll out your swag for the final evening under the stars. (BLD)

**Day 10: Kings Canyon to Alice Springs** Travel along the West MacDonnell Ranges stopping at Glen Helen Gorge and Ormiston Gorge. Swim at Ellery Creek Big Hole or Simpsons Gap before arriving in Alice Springs at approximately 5pm. (BL)

### INCLUDES:

- 9 nights swag accommodation
- Meals as indicated (B = breakfast, L = lunch, D = dinner)
- National park entry fees
- Return transfers from selected accommodation

**Departs:** Every Mon and alternate Thu from Adelaide at 6:30am

**Returns:** Alice Springs at 5pm



### PRICE PER PERSON:

Adult twin share \$1695

\$200 Land Fee payable direct on day of departure. Sleeping bag hire also available.

HEADING BUSH ADVENTURES

HEASAU

## 10 Day Adelaide to Perth Wildlife Experience



### HIGHLIGHTS:

- Southern Flinders Ranges ■ Gawler Ranges
- Eyre Peninsula ■ Great Australian Bight
- Nullarbor ■ Esperance ■ Margaret River
- Cape Le Grand National Park ■ Albany
- Bush camping underneath the southern skies

**Day 1: Flinders Ranges and Gawler Ranges** Journey into the rusty, rugged gorges, abandoned homesteads and ghost gums of the southern Flinders Ranges National Park. Enjoy a camel trek followed by a bush tucker lunch then experience a stunning salt lake landscape at Lake Gairdner in the Gawler Ranges National Park. Tonight's accommodation is at a bush camp. (LD)

**Day 2: Eyre Peninsula** Travel through the Gawler Ranges and on to the Eyre Peninsula, a region teeming with outstanding wildlife experiences. Visit the coastal town ship of Venus Bay for a walk in paradise before sand boarding down massive sand dunes and discovering a coastal cave formation. This evening get up close and personal with Australian wildlife – kangaroos, wombats and emus. Dorm style accommodation with share facilities for two nights at Coodlie Park Farm Retreat.

**Day 3: Eyre Peninsula** Learn to surf on an isolated footprint-free beach and discover some hidden secrets of the Eyre Peninsula. See weird and wonderful rock formations and relax on your own private beach!

**Day 4: The Great Australian Bight to Eucla** Head into some of the remotest country on the planet, The Nullarbor Plain and the Great Australian Bight. Cross the Dingo Fence, the Yalata Aboriginal lands and at the Head of the Bight, stop to take in the staggering sheer drop of the Bunda Cliffs. During June and October it is possible to see migrating Southern Right whales. Continue towards the town of Eucla and set up camp in the desert. (BLD)

**Day 5: The Nullarbor** Head west across Australia's great Nullarbor Plain. This huge expanse of karst limestone has the biggest underground lake system in Australia. Settle in at the campsite (no facilities) and see the spectacular southern night sky on show. Pick out constellations, the Southern Cross and shooting stars. (BLD)

**Days 6 and 7: Esperance** Get set for some of Western Australia's most beautiful scenery and national parks, including the Cape Le Grand National Park, with stunning blue seas, powder white beaches and secluded bays. A full day is at leisure where you can take in some hikes, go swimming or relax at the beach. Overnight at Cape Le Grand National Park, with toilet and shower facilities. (BLD)

**Day 8: Esperance to Albany** Today, visit the charming town of Albany, once the haven of whalers with its secluded harbours. Experience the town's great pubs, friendly locals and a stunning location and colourful history. Overnight at a private camping site with toilet and shower facilities. (BLD)

**Day 9: Albany to Conti or Beedleup** See Western Australia's version of the Great Ocean Road and witness incredible granite formations near Albany. Travel further inland to experience the majesty of the forest in the Valley of the Giants. Take a tree top walk through the canopy before continuing to a choice of campsites at two national parks. (BLD)

**Day 10: Beedleup or Conti to Margaret River and Perth** Finish the 4,000 kilometre road trip by heading up the Western coast via the surfers' paradise of Yallingup in the Margaret River region. Explore a unique cave system and meet local Aboriginal people. Continue to Busselton, a laid back coastal paradise, before arriving at Perth.

**Departs:** From Adelaide at 6:30am  
Alternate Wed (Apr – May, Sep – Oct)  
Wed (Dec – Mar)

**Returns:** Perth at 6pm

### INCLUDES:

- 9 nights accommodation ■ Use of camping equipment
- National park entry fees ■ Air-conditioned mini coach
- Meals as indicated (B = breakfast, L = lunch, D = dinner)
- Return accommodation transfers



### PRICE PER PERSON:

Adult \$1495

Sleeping bag hire also available. 9 Day Perth to Adelaide Wildlife Adventure also available.

NULLARBOR TRAVELLER

NULSAU

# Murray River Cruising

## 3 Day Murray River Discovery Cruise



**HIGHLIGHTS:**

- See abundant wildlife
- Ecologist guided tours
- Mannum
- Reedy Creek Environmental Park
- Teal Flat
- Maximum 40 passengers

**Day 1:** Be welcomed aboard by the friendly Murray Expedition crew. Once settled into your accommodation, enjoy drinks and a delicious buffet supper as the Murray Expedition cruises to her overnight mooring point at Sunnyside. See the Murray River from a different perspective as the lights illuminate the willows and dark waters. Keep an eye out for the nocturnal wildlife such as night herons, owls and coots. (S)

**Day 2:** Continue upstream today through some of the most spectacular scenery on the entire River

Murray system. Cruising continues past the many small river townships, with the chance to absorb the unique surroundings with a late morning stopover in the historic town of Mannum. Enjoy a delicious lunch as you cruise before arriving at Teal Flat. A highlight of the journey is a guided cruise led by an ecologist aboard a small boat through the lagoons and inlets of this sanctuary. Enjoy a traditional barbecue on shore followed by entertainment around a campfire. (BLD)

**Day 3:** Cruise downstream before arriving in picturesque Mannum and take a coach tour of the Reedy Creek Environmental Park. Your guide will provide you with information to enable you to identify significant rock formations and the abundant native vegetation and birdlife. Lunch is a delicious buffet with fresh local produce, served as the Murray Expedition cruises downstream. See more spectacular scenery in the afternoon before arriving in Murray Bridge. (BL)

**INCLUDES:**

- 2 nights accommodation on board
- Use of all vessel facilities
- On shore entertainment and excursions guided by an ecologist
- Meals as indicated (B = breakfast, L = lunch, D = dinner, S = supper)

**Departs:** Fri from Murray Bridge at 8pm

**Returns:** 4pm

**PRICE PER PERSON:**

Adult triple share	\$865
Adult twin share	\$965
Adult sole use	\$1480
Child 3-11 years	\$620

\$14 per person fuel levy payable direct.

MURRAY RIVER EXPEDITIONS

MURADL

## 6 Day Murray River Wildlife Expedition Cruise



**HIGHLIGHTS:**

- Prolific birdlife and wildlife
- Ecologist guided tours
- Aboriginal guided tour
- On shore excursions
- Mannum
- Reedy Creek Environmental Park
- Maximum 40 passengers

**Day 1:** Be welcomed aboard by the Captain and crew of the Murray Expedition. Settle into your accommodation and enjoy a drink at the bar before a delicious supper is served. The Expedition's powerful floodlights illuminate the shore as you cruise, providing an excellent opportunity to see the river environment and nocturnal wildlife. (S)

**Day 2:** Cruise upstream as you enjoy a delicious buffet breakfast while passing through huge lagoons teeming with birdlife. Arrive in picturesque Mannum and board the waiting coach for a historic tour of this small township. Re-trace the colourful history of several pioneering families whose efforts shaped the successful development of this region. Visit the 'Olden Days, Olden Ways' Museum in Mannum, where you will find a large collection of historic memorabilia.

Enjoy a themed 'Australiana Night' this evening and sample some traditional bush foods such as emu, kangaroo, damper bread, fresh water yabbies, lemon myrtle, wild bush tomatoes and quandongs (wild peaches), combined into exciting creations by the on board chefs. Join the resident ecologist for a Nocturnal Discovery Tour to see native flora and fauna. (BLD)

**Day 3:** After breakfast, continue upstream and pass fascinating Wongulla, where some fifty years ago, 20 million year old petrified remains of a shark were found. Arriving at the pioneering township of Swan Reach, disembark with a local guide to visit Murray Aquaculture to see one of many species of crayfish found in Australia. The Murray Expedition continues to Blanchetown, site of the Lock and Weir No. 1 on the River Murray, an excellent feeding place for pelicans and dozens of species of water birds. (BLD)

**Day 4:** Wake in one of the most unspoilt and picturesque areas of the River Murray. Join a guided walk to see evidence of an ancient Aboriginal civilization and learn about the Aboriginal tribe that once lived in this area. Cruise

downstream through magnificent lagoons and spectacular scenery. Join your guide through the lagoons and inlets to see a variety of species of birdlife. This evening enjoy a traditional Australian barbecue on shore with entertainment around a blazing campfire. (BLD)

**Day 5:** See the sun rise over the towering cliffs while enjoying breakfast. Berth at the Ngaut Ngaut Aboriginal conservation area for a guided tour of Aboriginal archaeological digs containing galleries of cave art. Arrive in Mannum this afternoon and visit the museum or stroll through Mary Ann Reserve. Enjoy cocktails and hors d'oeuvres on board this evening followed by a sumptuous five course dinner. (BLD)

**Day 6:** A hearty buffet breakfast this morning before a coach tour of Reedy Creek Environmental Park. Take a bush walk through Reedy Creek Gorge before re-boarding your vessel for the final leg of the journey, disembarking at Murray Bridge. (BL)

**INCLUDES:**

- 5 nights accommodation on board
- Use of all vessel facilities
- On shore entertainment and excursions guided by an ecologist
- Meals as indicated (B = breakfast, L = lunch, D = dinner, S = supper)

**Departs:** Sun from Murray Bridge at 8pm

**Returns:** 4pm

**PRICE PER PERSON:**

Adult triple share	\$2190
Adult twin share	\$2410
Adult sole use	\$3700
Child 3-11 years	\$1565

\$35 per person fuel levy payable direct.

MURRAY RIVER EXPEDITIONS

MURADL

## PS Murray Princess



There's no better way to see the Murray River and the rich legacy of old riverside ports than to cruise unhurried and quietly under the power of the paddle-wheeler, PS Murray Princess.

Captain Cook Cruises offers a unique historic and nature based adventure, past Mallee scrub, stands of grey and silver river gums, towering gorges and ochre-coloured limestone cliffs, lush vineyards and big river bends.

You can hike around a boardwalk trail, take a guided nature walk or a small boat safari of the wetlands, visit a riverside village, take a nocturnal eco-tour before a riverside barbecue or sample some of the local produce at the cellar door. You can also choose to extend your cruise with an optional full day tour of Australia's richest and best known wine making region – the Barossa.

### VESSEL FEATURES:

- Spas (2)
- Saunas (2)
- Sun deck
- Gift shop
- Bars and lounges (2)
- Single-sitting dining saloon
- Lift
- Guest laundry
- Library and videos
- Speed boat
- Maximum 120 guests

### CABIN FEATURES:

- Air-conditioning
- Ensuite
- Daily servicing

Inside Cabins open to an inside passageway and have portholes facing the outside. Staterooms and Outside Cabins open to outside walkways and have picture windows.

### INCLUDES:

- On board accommodation
- Captain's dinner
- All meals including 24 hour tea and coffee facilities
- Entertainment
- Guided nature walks and eco tours
- Township visits
- Bush barbecue (4 night cruise)
- On board presentations
- Aboriginal cultural tours
- Complimentary scenic coach transfers from Mercure Grosvenor Hotel in Adelaide or car parking in Mannum (must be pre-booked).



### DEPARTURE INFORMATION:

From Mannum (90 minutes from Adelaide)

#### 3 NIGHT DISCOVERY CRUISE

Departs: Fri from Adelaide at 2pm, Mannum at 4:30pm  
Returns: Mon to Mannum at 9am, Adelaide at 12 noon

#### 4 NIGHT OUTBACK HERITAGE CRUISE

Departs: Mon from Adelaide at 2pm, Mannum at 4:30pm  
Returns: Fri to Mannum at 9am, Adelaide at 12 noon

#### 7 NIGHT MURRAYLANDS AND WILDLIFE CRUISE INCLUDING THE BAROSSA

Departs: Mon and Fri from Adelaide at 2pm, Mannum at 4:30pm  
Returns: Mon and Fri to Mannum at 9am, Adelaide at 12 noon



### EARLY BIRD OFFER

Save 10% per adult. Conditions apply.

PRICE PER PERSON:	TWIN SHARE	SOLE USE
<b>3 NIGHT DISCOVERY CRUISE</b>		
Inside Cabin	\$777	\$969
Outside Cabin	\$1099	\$1374
Stateroom	\$1299	\$1624
<b>4 NIGHT OUTBACK HERITAGE CRUISE</b>		
Inside Cabin	\$1039	\$1299
Outside Cabin	\$1399	\$1749
Stateroom	\$1699	\$2124
<b>7 NIGHT MURRAYLANDS CRUISE</b>		
Inside Cabin	\$1599	\$1999
Outside Cabin	\$2299	\$2874
Stateroom	\$2699	\$3374

Double bed surcharge for Inside and Outside Cabins of \$50 per cabin per night applies. Optional Barossa Valley tour for the 3 or 4 night cruise is \$145 per person, returns 5:30pm to Adelaide. Triple share Outside Cabin and Stateroom prices also available. A fuel levy may apply, payable direct.

CAPTAIN COOK CRUISES

CAPSYD

# Car Hire

## Avis



Why not add Avis to your travel plans and make the most of your holiday by enjoying the flexibility and convenience that an Avis car rental provides.



Situated at all major airport and city locations and offering a wide range of late model vehicles to choose from, all at great rates, renting with Avis is sure to make your holiday escape more enjoyable.

All Avis vehicles are air-conditioned and come with 24 hour roadside assistance.

Plus you get unlimited kilometres in Metropolitan and Country areas as well as free maps to help you find your destination.

### PRICES INCLUDE

- Loss Damage Waiver
- Administration Fee
- Vehicle Registration Fee
- GST

Airport Inclusive Prices also include:

- Concession Recovery Fee/Premium Location Surcharge

Car rentals commencing in Metropolitan and Country locations include unlimited kilometres. Rentals commencing in Remote locations include 100 kilometres per day with excess kilometres charged at 27.5c per kilometre.

### PRICES DO NOT INCLUDE

- Excess Reduction
- One way rental fees
- Tolls
- Fuel

Standard Prices also exclude:

- Concession Recovery Fee/Premium Location Surcharge

### CONDITIONS

All prices are based on a 24 hour rental period (e.g. pick-up 9am the first day; drop off 9am the next day). Any time over the 24 hour period will incur an additional charge.

### EXCESS

An Excess of \$1,950 applies to drivers of all vehicles, with the exception of Groups K and W, which have an Excess of \$5,500. Optional Excess Reduction can be purchased direct for an additional fee of \$19.80 per day, or \$33 per day for Groups K and W. This fee reduces the Excess to \$330, or \$1,100 for Groups K and W.

### MINIMUM AGE AND LICENCE REQUIREMENTS

The minimum age for drivers of vehicle groups X, A, B, C and D is 21 years. Drivers aged 21 to 24 years inclusive are required to pay a \$27.50 per day surcharge (to a maximum of \$192.50), which is payable directly to Avis at the time of rental. For all other vehicle groups, the minimum age for drivers is 25 years.

Drivers must hold an open licence and have held that licence for at least 12 months.

#### Group X – 3 Door Hyundai Getz Hatch (or similar)



- 3 door • manual • 4 cylinders • 1.4 litre • radio/CD
- air-conditioning • power steering • driver's airbag

#### Groups A & B – 5 Door Hyundai Getz Hatch (or similar)



- 5 door • manual (Group A) • automatic (Group B)
- 4 cylinders • 1.4 litre • radio/CD • air-conditioning
- power steering/locks • dual airbags

#### Group C – Toyota Corolla Sedan (or similar)



- 4 door • automatic • 4 cylinders • 1.8 litre • radio/CD • tilt wheel
- air-conditioning • power steering/locks • dual airbags

#### Group D – Mitsubishi Lancer (or similar)



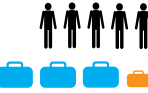
- 4 door • automatic • 4 cylinders
- 2.0 litre • radio/CD • air-conditioning
- power steering/locks/windows • tilt wheel • dual airbags

#### Group E – Ford Falcon Sedan (or similar)



- 4 door • automatic • 6 cylinders • radio/CD
- air-conditioning • power steering/locks/windows
- remote/central locking • tilt wheel • dual airbags
- cruise control • ABS brakes • traction control

#### Group F – Holden Commodore Wagon (or similar)



- 5 door • automatic • 6 cylinders • 3.6 litre • radio/CD
- air-conditioning • power steering/locks/windows
- remote/central locking • tilt wheel • dual airbags
- cruise control • ABS brakes

#### Group V – Toyota Tarago GLI Van (or similar)



- 5 door • automatic • 4 cylinders • 2.4 litre
- radio/CD • air-conditioning • power steering/locks/windows
- tilt wheel • dual airbags • dual sliding doors

#### Group K – Toyota Rav 4 (or similar)



- 5 door • automatic • 4 cylinders • 2.4 litre • radio/CD
- air-conditioning • power steering/locks/windows
- tilt wheel • dual airbags

#### Group W – Mitsubishi Pajero (or similar)



- 5 door • automatic
- 4 cylinders • 3.2 litre diesel • radio/CD • air-conditioning
- power steering • central locking • tilt wheel • dual airbags

Small Suitcase Large Suitcase

### VEHICLE TYPES

Vehicles in particular groups are subject to availability and may vary by location. A similar vehicle to those pictured may be substituted. Not all vehicle types are available at all locations.

### SECURITY DEPOSIT

A credit card imprint is required when you take delivery of your vehicle to cover any additional costs such as petrol, child seats, etc. If you are not paying by credit card, a cash deposit is required and you will need to be Cash Qualified before collecting the vehicle.

PRICE PER CAR PER DAY		STANDARD PRICES									AIRPORT INCLUSIVE PRICES								
		1 - 30 APR, 1 JUL - 21 DEC 11, 10 JAN - 31 MAR 12			1 MAY - 30 JUN 11			22 DEC 11 - 9 JAN 12			1 - 30 APR, 1 JUL - 21 DEC 11, 10 JAN - 31 MAR 12			1 MAY - 30 JUN 11			22 DEC 11 - 9 JAN 12		
GROUP	CAR TYPE	2-3 DAYS	4-6 DAYS	7+ DAYS	2-3 DAYS	4-6 DAYS	7+ DAYS	2-3 DAYS	4-6 DAYS	7+ DAYS	2-3 DAYS	4-6 DAYS	7+ DAYS	2-3 DAYS	4-6 DAYS	7+ DAYS	2-3 DAYS	4-6 DAYS	7+ DAYS
X	Hyundai Getz (3 Door Manual)	\$51	\$46	\$44	\$43	\$39	\$36	\$58	\$53	\$51	\$58	\$53	\$49	\$49	\$45	\$42	\$66	\$62	\$58
A	Hyundai Getz (5 Door Manual)	\$53	\$49	\$48	\$47	\$43	\$41	\$60	\$56	\$53	\$61	\$57	\$55	\$54	\$50	\$47	\$70	\$65	\$62
B	Hyundai Getz (5 Door Auto)	\$58	\$53	\$50	\$48	\$44	\$42	\$66	\$60	\$58	\$66	\$61	\$58	\$55	\$51	\$48	\$76	\$70	\$66
C	Toyota Corolla	\$63	\$58	\$54	\$52	\$48	\$45	\$72	\$66	\$63	\$73	\$66	\$62	\$59	\$56	\$52	\$82	\$76	\$73
D	Mitsubishi Lancer	\$70	\$63	\$60	\$57	\$53	\$49	\$79	\$73	\$69	\$81	\$73	\$69	\$66	\$62	\$57	\$92	\$84	\$79
E	Ford Falcon	\$74	\$69	\$65	\$61	\$58	\$54	\$86	\$79	\$74	\$85	\$79	\$74	\$69	\$67	\$62	\$99	\$91	\$86
F	Holden Commodore Wagon	\$83	\$76	\$73	\$76	\$69	\$66	\$95	\$87	\$83	\$95	\$87	\$84	\$87	\$79	\$76	\$110	\$99	\$95
V	Toyota Tarago GLI Van	\$109	\$99	\$93	\$91	\$83	\$77	\$126	\$115	\$109	\$125	\$115	\$108	\$111	\$96	\$89	\$146	\$133	\$126
K	Toyota Rav 4	\$77	\$72	\$67	\$70	\$65	\$61	\$89	\$81	\$77	\$89	\$82	\$79	\$81	\$75	\$69	\$105	\$95	\$89
W	Mitsubishi Pajero	\$136	\$123	\$118	\$122	\$113	\$106	\$156	\$142	\$135	\$157	\$142	\$135	\$141	\$129	\$122	\$180	\$163	\$155

Airport Inclusive prices are valid for collection of vehicles from airports or Avis Premium locations. Other prices apply for one day rentals. Ask your travel agent for details.

Not all Avis locations participate in this program and not all vehicle types are available at all locations. Check with your travel agent at time of booking. Note: Vehicles may not be taken to Kangaroo Island.

AVIAUD/AVIAUA

## Britz Australia Campervan Rentals



EXPLORER

Britz Australia is the largest operator of self drive, recreational vehicles in Australia. Campervans come equipped with microwave, gas stove, refrigerator, radio, CD player and several models feature a shower and toilet.

When you travel Australia with Britz, every road takes you on a new adventure, with 11 branches Australia wide. The branch in South Australia is located in Adelaide.

### PRICES INCLUDE

- Unlimited kilometres
- Vehicle Liability Cover (excess applies)
- Administration fee
- Extra driver fees
- 24/7 customer care helpline
- Linen and bedding
- Outback safety kit (4WD vehicles)
- Kitchen kit (cutlery, crockery etc)
- General equipment (broom, dust pan etc)
- Maps ■ Camping ground guides
- 10% discount at BIG4 parks powered sites

### PRICES DO NOT INCLUDE

- One way fees
- Liability (excess) Reduction
- Fuel

### CONDITIONS

Minimum age for drivers is 21 years.

Minimum rental period is five days for return rentals and seven days for one way rentals, except 15 Dec 11 – 5 Jan 12 when the minimum rental period is 10 days for Voyager, 4WD Safari, Explorer, Escape, Renegade and Frontier vehicles and seven days for all other vehicle types. One way rental fees apply.

Britz Bonus Pack including nil liability, one way fee inclusion, gas bottle, table, chairs and baby or booster seat available on application.

All hires are subject to Britz Australia Campervan and 4WD 2011/12 rental terms and conditions.

### AREA RESTRICTIONS

Driving area restrictions apply to some vehicles. 2WD campervans can only be driven on sealed roads. 4WD vehicles may be driven on recognised unsealed roads.

### PRICE PER VEHICLE PER CALENDAR DAY

VEHICLE TYPE	SLEEPS	1-30 APR 11	1 MAY - 30 JUN 11	1 JUL - 30 SEP 11	1-31 OCT 11	1 NOV - 14 DEC 11	15 DEC 11 - 14 JAN 12	15 JAN - 31 MAR 12
HiTop	2/3	\$105	\$59	\$113	\$146	\$135	\$170	\$124
Voyager	4	\$135	\$88	\$157	\$178	\$167	\$205	\$151
Elite	2	\$150	\$99	\$167	\$215	\$189	\$217	\$172
4WD Bushcamper	2/3	\$176	\$184	\$232	\$204	\$189	\$184	\$159
4WD Safari	5	\$180	\$189	\$238	\$213	\$200	\$194	\$167
4WD Challenger	2	\$186	\$193	\$242	\$214	\$199	\$193	\$168
Explorer	4	\$207	\$135	\$259	\$286	\$265	\$319	\$226
Escape	5	\$221	\$149	\$281	\$312	\$280	\$336	\$247
Renegade	6	\$224	\$152	\$283	\$314	\$282	\$338	\$249
Frontier	6	\$243	\$152	\$292	\$319	\$291	\$346	\$258

Reduced prices apply for rentals of 21 days and over.

BRIAUS



### HITOP

- Manual transmission
- Air-conditioned driver's cabin
- Large double and single bed
- Gas stove
- Microwave
- Refrigerator
- Fold out table



### VOYAGER

- Automatic transmission
- Air-conditioned driver's cabin
- Two double beds
- Gas stove
- Microwave
- Refrigerator
- Fold out table



### ELITE

- Automatic transmission
- Air-conditioned driver's and main cabin
- Double bed ■ Gas stove
- Microwave ■ Refrigerator
- Shower and toilet ■ Safe
- Hot and cold pressurised water



### 4WD BUSHCAMPER

- Manual transmission
- Air-conditioned driver's cabin
- One double and one single bed
- Gas stove ■ Refrigerator
- Long range fuel tank
- Solar heated portable shower



### 4WD CHALLENGER

- Manual transmission
- Air-conditioned driver's cabin
- One double and one single bed
- Gas stove ■ Refrigerator
- Long range fuel tank
- Solar heated portable shower



### ESCAPE

- Automatic transmission
- Air-conditioned driver's and main cabin
- Gas stove ■ Microwave
- Two double and one single bed
- Refrigerator ■ Shower and toilet
- TV/DVD ■ Fitted awning



### RENEGADE

- Automatic transmission
- Air-conditioned driver's and main cabin
- Three double beds or two single and two double beds ■ Gas stove
- Microwave ■ TV/DVD ■ Refrigerator
- Awning ■ Shower and toilet ■ Safe



### FRONTIER

- Automatic transmission
- Air-conditioned driver's and main cabin
- Gas stove ■ Microwave
- Three double beds
- Refrigerator ■ Shower and toilet
- TV/DVD ■ Awning