



Tangalooma Wrecks, Moreton Island

Follow up your city escape with an island getaway beyond Brisbane. Set out across the bay to Moreton Island. Hand feed wild dolphins and soak up the nature in a place that's almost entirely national park. Get your adventure fix as you toboggan down one of the world's largest sand dunes or dive the Tangalooma Wrecks.

Head to the beach at North Stradbroke Island. Have your moment in the sun at one of the most popular beach holiday spots for locals and visitors alike. Get the best of both worlds on 'Straddie'. On one side of the island, find white sandy beaches perfect for swimming, surfing and fishing. On the sheltered western edge is a calm retreat when it's time to relax. Head up to Point Lookout to spot whales from June to November.

Closer to Brisbane, take a drive out to seaside villages Scarborough and Redcliffe. Take a dip in the ocean, jump on a jet ski, go fishing or cruise the bay to see dolphins and dugongs. Then at the end of the day, make the perfect picnic of fish and chips by the water.

Brisbane is perfectly placed for both island and country escapes. If it's mountaintops and charming villages that call you, take a drive out to South East Queensland Country. Stunning countryside, charming towns, national parks and hinterland vineyards are there for the taking, just over an hour from Brisbane.



Our Favourites

Try sand tobogganing and quad biking on Moreton Island

Spot marine life from Point Lookout on North Stradbroke Island

Take a refreshing swim at Blue or Brown Lakes at North Stradbroke Island

Buy fresh mouth watering seafood at Morgans Seafood at Scarborough

Drop a line from Redcliffe Jetty

Explore the Scenic Rim's spectacular bushwalks

Experience life on a working cattle station at Spicers Hidden Vale



Scenic Rim

FIND YOUR ACCOMMODATION

REF.	APARTMENTS	PAGE
2	All Seasons Stradbroke Island ♦♦♦♦	26
REF.	HOTELS	PAGE
4	Spicers Hidden Vale ♦♦♦♦◇	26
5	Spicers Peak Lodge ♦♦♦♦♦	26
1	Tangalooma Island Resort ★★★☆	25
Other properties available		
3	Metro Hotel Ipswich ★★★★★	-

Tangalooma Island Resort ★★☆☆

From **\$147** PER ROOM PER NIGHT*



Moreton Island, via Brisbane

With over 80 tours and activities only a 75 minute cruise from Brisbane, the hardest decision will be how long to stay at Tangalooma Island Resort. Surrounded by pristine waters and untouched national parks, the resort is the perfect destination for your next escape.

A highlight of any stay is the opportunity to interact closely with nature. Each evening wild Bottlenose dolphins eagerly swim up to the beach to be hand fed fresh fish by resort guests, an unforgettable experience. This is in addition to the many other Eco based nature experiences such as the Marine Discovery cruise and Whale Watching cruises that the island resort offers.

Stay within 50 metres of the beach amidst landscaped gardens and natural bushland with a range of accommodation to suit every style and budget.

Tangalooma's wide range of resort facilities caters for everyone, from families and couples, to those seeking action or a nature based experience in a truly relaxing environment.

PROPERTY FEATURES:

- Restaurants (2) ■ Café ■ Evening entertainment
- Bistro ■ Bars (3) ■ Tennis court ■ Pools (3)
- Tanga Tours Active Kidz Club (8-14 years) operating year round (extra charge)

WILD DOLPHIN PACKAGE

INCLUDES:

- 1 nights accommodation ■ Full buffet breakfast daily
- Wild dolphin feeding on one night ■ Daily maid service
- Return launch transfers from Holt Street Wharf
- FREE Night Offer: Stay 7 nights, pay for 6 ■ 12:30pm check-in
- DOLPHIN GETAWAY ESCAPE FREE NIGHT OFFER: Stay 3 nights, pay for 2, valid 1 Jun – 31 Aug 11

PRICE PER PERSON	ADULTS	1 NT	EXTRA NTS
1 – 21 APR, 26 – 30 APR, 1 JUN 11 – 31 MAR 12			
Hotel Room	2	225	150
Resort Unit	2	240	165
Resort Suite	2	250	175
Hotel Deluxe Room	2	265	190
1 – 31 MAY 11			
Hotel Room	2	148	73
Resort Unit	2	163	88
Resort Suite	2	173	98
Hotel Deluxe Room	2	188	113

3 night minimum stay applies 25 Dec 11 – 1 Jan 12. Child prices on application. Other prices apply 22 – 25 Apr 11. 2 Bedroom Villa and Deep Blue 2, 3 and 4 Bedroom Apartment prices also available.

COMPLIMENTARY ACTIVITIES INCLUDE:

- Dolphin feeding program (conditions apply)
- Tennis ■ Beach volleyball
- Archery ■ Basketball ■ Croquet
- Table tennis ■ Eco walks ■ Squash
- Golf driving net and putting green
- Marine Education and Conservation Centre

ACTIVITIES AVAILABLE AT AN EXTRA CHARGE:

- Whale Watching (Jun – Oct)
- Marine Discovery cruise ■ Kayaking
- Fishing ■ 4WD tour ■ ATV Quad Bike tour
- Desert Safari tour (including sand tobogganing)
- Snorkelling equipment and tours ■ Jet ski tour
- Helicopter flights ■ Parasailing ■ Catamarans
- Island tour ■ Dinghy hire

Book your Marine Discovery Cruise, Whale Watching Cruise, Desert Safari tour and ATV Quad bike tour before you travel. Ask your travel agent for details.

ACCOMMODATION FEATURES:

- Air-conditioning (except Villas) ■ Fan (Villas)
- Balcony or patio (except Resort Units and Resort Suites)
- Limited cooking facilities (Resort Units and Resort Suites)
- Kitchen with microwave (Villas and Deep Blue Apts)
- Washing machine (Villas and Deep Blue Apartments)

Room serviced daily

Map page 24 Ref. 1

Deep Blue Apartments ★★☆☆☆

DOLPHIN GETAWAY

INCLUDES:

- 2 nights accommodation
- Full buffet breakfast daily
- Wild dolphin feeding on one night
- Return launch transfers from Holt Street Wharf
- 3pm check-in

PRICE PER PERSON	ADULTS	2 NTS	EXTRA NTS
1 – 21 APR, 26 APR 11 – 31 MAR 12			
Hotel Room	2	310	118
Resort Unit	2	340	133
Resort Suite	2	360	143
Hotel Deluxe Room	2	390	158
2 Bedroom Villa	2	410	168

No daily maid service. Child prices on application.

Other prices apply 22 – 25 Apr 11.

Deep Blue 2, 3 and 4 Bedroom Apartment prices also available.

HOW TO GET THERE:

From Brisbane Transit Centre, selected Brisbane hotels and Brisbane Airport to Holt St Wharf – 15 minutes by coach from Transit Centre or Airport. 90 minutes from selected Brisbane hotels.

PRICE:	RETURN
Adult	\$40
Child 3-14 years	\$20

From Holt St Wharf, Pinkenba, Brisbane – 75 minutes by launch.

PRICE:	RETURN
Adult	\$75
Child 3-14 years	\$40

Transfers must be booked in conjunction with accommodation.



1 – 21 APR, 26 APR 11 – 31 MAR 12	ADULTS	1 NT	2 NTS	4 NTS
Hotel Room	2	310	620	1240
Resort Unit	2	340	680	1360
Resort Suite	2	360	720	1440
Hotel Deluxe Room	2	390	780	1560
2 Bedroom Villa	2	400	800	1600
Deep Blue 2 Bedroom Apartment	2	N/A	1240	2480
Deep Blue 3 Bedroom Apartment	2	N/A	1440	2880
Deep Blue 4 Bedroom Apartment	2	N/A	1640	3280

22 – 25 APR 11	ADULTS	2 NTS	4 NTS	6 NTS
Hotel Room	2	700	1400	2100
Resort Unit	2	800	1600	2400
Resort Suite	2	840	1680	2520
Hotel Deluxe Room	2	900	1800	2700
2 Bedroom Villa	2	1000	2000	3000
Deep Blue 2 Bedroom Apartment	2	N/A	3080	4620
Deep Blue 3 Bedroom Apartment	2	N/A	3480	5220
Deep Blue 4 Bedroom Apartment	2	N/A	3880	5820

2 night minimum stay applies 25 Dec 11 – 1 Jan 12. Extra person charge: \$30 per person per night.

Includes	Wild dolphin feeding on one night.
Hotel Deluxe Rooms include guaranteed top floor, use of bathrobes and slippers, a bottle of wine and chocolates in room on arrival.	

Children 0 to 2 years – cot free of charge.
3 to 14 years – adult prices apply.

Max capacity Hotel Room/Resort Unit/Hotel Deluxe Room – 4, Resort Suite – 5, 2 Brm Villa – 7 adults/1 child, Deep Blue 2 Brm Apartment – 6, Deep Blue 3 Brm Apartment/ Deep Blue 4 Brm Apartment – 10.

TANMOR

North Stradbroke Island and South East Queensland Country

All Seasons Stradbroke Island ◆◆◆◆



43-57 East Coast Road, Point Lookout, North Stradbroke Island
North Stradbroke Island boasts white beaches, fantastic surfing, great fishing and a laid-back feel.

The resort is an easy stroll to Point Lookout, with its spectacular views north along Moreton Island and east to the horizon. There is something for people of all ages and interests to enjoy a beach break on 'Straddie', one of Queensland's best-kept secrets.

PROPERTY FEATURES:

- Café ▪ Pool ▪ Children's playground
- Exercise equipment ▪ Internet access (wireless)
- Parking ▪ Shuttle bus from Dunwich (extra charge)

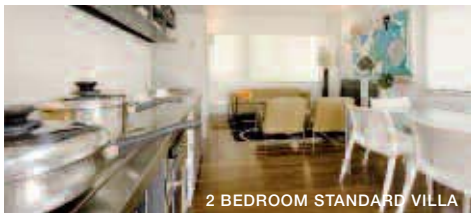
ACCOMMODATION FEATURES:

- Air-conditioning ▪ Fan ▪ Balcony ▪ Barbecue ▪ Cable TV
- Limited cooking facilities with microwave and dishwasher
- CD/DVD player ▪ Washer ▪ Drying rack (Shacks)
- Dryer (Villas) ▪ Ironing facilities ▪ All rooms non smoking

Apartment serviced weekly for stays of 7 nights or more

Beach 50m
1 hour from Brisbane
Map page 24 Ref. 2

Access: By vehicular ferry from Cleveland To Dunwich (extra charge).



2 BEDROOM STANDARD VILLA

		From \$151 PER ROOM PER NIGHT*			
		ADULTS	2 NTS	5 NTS	7 NTS
1 - 21 APR, 27 APR - 15 SEP, 11 OCT - 15 DEC 11, 28 JAN - 31 MAR 12					
1 Bedroom Beach Shack	1 to 2	302	755	1057	
2 Bedroom Standard Villa	1 to 4	400	1000	1400	
3 Bedroom Standard Villa	1 to 6	480	1200	1680	
4 Bedroom Standard Villa	1 to 8	560	1400	1960	
22 - 26 APR, 16 SEP - 10 OCT, 16 DEC 11 - 27 JAN 12					
1 Bedroom Beach Shack	1 to 2	753	1255	1757	
2 Bedroom Standard Villa	1 to 4	900	1500	2100	
3 Bedroom Standard Villa	1 to 6	1020	1700	2380	
4 Bedroom Standard Villa	1 to 8	1140	1900	2660	

Children 0 to 2 years - cot/bed charge payable direct.
3 to 10 years - adult prices apply.

Max capacity 1 Bedroom Beach Shack - 2,
2 Bedroom Standard Villa/3 Bedroom Standard Villa - 8, 4 Bedroom Standard Villa - 12.

ALLNSI

Spicers Hidden Vale, South East Queensland Country ◆◆◆◆◆



617 Mount Mort Road, Grandchester

Situated on a 12,000 acre working cattle station just an hour's drive from Brisbane and 90 minutes from the Gold Coast, offering an exclusive country getaway with stylish accommodation, a variety of fine food and a range of outdoor activity experiences. The property features an elegantly restored Australian homestead with a total of 31 rooms and suites across individual colonial style cottages. Spicer's Hidden Vale is a complete getaway for families and couples to enjoy the great outdoors and experience the beauty of Australian country life.

PROPERTY FEATURES:

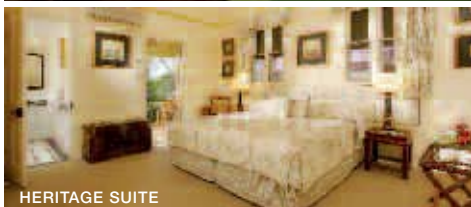
- Restaurant ▪ Bar ▪ Library ▪ Tennis court
- Massage facilities ▪ Pools (2) ▪ Animal nursery
- Horse riding, clay target shooting, 4WD tours, archery, mountain bikes and bush walking trails

ACCOMMODATION FEATURES:

- Verandah ▪ Air-conditioning ▪ CD/DVD player ▪ Hair dryer
- Mini bar ▪ Tea/coffee making facilities ▪ Ironing facilities
- Spa bath and fireplace (Heritage and Luxury Suites)

Room serviced daily

70km south west of Brisbane
Map page 24 Ref. 4



HERITAGE SUITE

		From \$299 PER ROOM PER NIGHT*			
		ADULTS	1 NT	2 NTS	3 NTS
1 APR 11 - 31 MAR 12					
Valley Room	1 to 2	299	598	897	
Heritage Suite	1 to 2	459	918	1377	
Luxury Suite	1 to 2	539	1078	1617	

Includes Full breakfast daily.

Children 0 to 2 years - cot/bed charge payable direct.
3 to 12 years - \$49 per child per night.

Max capacity Valley Room - 2,
Heritage Suite/Luxury Suite - 2 adults/2 children.

SHVQLD

Spicers Peak Lodge, Scenic Rim ◆◆◆◆◆



Wilkinson Road, Maryvale

Surrounded by Main Range National Park, Spicer's Peak Lodge offers a very special experience of first class accommodation, fine food and wine. The lodge is a secluded, boutique retreat built in the style of a mountain lodge with high ceilings, fireplaces, rich timber fittings and stylish decor. Spicer's Peak Lodge offers an intimate and relaxing experience in one of South East Queensland's most beautiful wilderness areas.

PROPERTY FEATURES:

- Restaurant ▪ Lounge ▪ Fireplace
- Pool ▪ Spa ▪ Library
- Pool table ▪ Tennis court ▪ Massage/beauty treatments
- Bushwalking, mountain biking, 4WD tours
- Wine appreciation class (on request)

ACCOMMODATION FEATURES:

- Air-conditioning ▪ Fireplace (most Suites)
- Outdoor spa (1 and 2 Bedrooms) ▪ DVD player
- Complimentary mini bar ▪ iPod docking station
- Tea/coffee making facilities ▪ All rooms non smoking

Room serviced daily

125km south west of Brisbane
Map page 24 Ref. 5



		From \$190 PER ROOM PER NIGHT*			
		ADULTS	1 NT	2 NTS	3 NTS
1 APR 11 - 31 MAR 12					
SUNDAY TO THURSDAY					
Lodge Suite	1 to 2	1190	2380	3570	
Spa Suite	1 to 2	1390	2780	4170	
1 Bedroom Lodge	1 to 2	1690	3380	5070	
2 Bedroom Lodge	1 to 4	2190	4380	6570	
FRIDAY TO SATURDAY					
Lodge Suite	1 to 2	1490	2980	N/A	
Spa Suite	1 to 2	1690	3380	N/A	
1 Bedroom Lodge	1 to 2	1890	3780	N/A	
2 Bedroom Lodge	1 to 4	2490	4980	N/A	

Includes All meals and beverages daily.
Gourmet picnic hampers on request.
Turndown service nightly.

Children 0 to 18 years - not catered for.

Max capacity Lodge Suite/Spa Suite/1 Bedroom Lodge - 3,
2 Bedroom Lodge - 4.

SPLQLD

SUNLOVER EXCLUSIVE
FREE 1 hour sunset 4WD tour for 2 adults for stays of 2 nights or more, valid 1 - 21 Apr, 27 - 29 Apr, 3 May - 10 Jun, 14 Jun - 23 Dec, 28 - 30 Dec 11, 3 Jan - 31 Mar 12.