

# Mornington Peninsula



Sorrento

Just an hour and a half drive from Melbourne gets you to a place of seaside villages, art galleries, golfing and great food and wine. One look at the spectacular coastline and beautiful beaches and it's easy to see why it has inspired so many artists and craftspeople. Their work can be seen in local galleries or follow the Art Walks along the bay. The calmer waters of the beaches along Port Phillip Bay contrast with the Peninsula's wild ocean side. The sea-battered cliffs around Cape Schanck epitomise the rugged nature of this coastline.

Indulgences come in many forms on the Mornington Peninsula. It's a golf lover's dream, with 18 golf courses dotting the region. Play the courses the champions play at Moonah Links or a cliff top course at Cape Schanck. Day spas are not hard to find either. The Peninsula Hot Springs near Rye is the pick – this bathing retreat combines bathing in thermal mineral pools with spa treatments and delicious food and wine.

A tour inland reveals another Mornington Peninsula highlight; its abundance of vineyards, orchards and food producers. Pinot Noir and Chardonnay are specialties of the region; sample the local drop at one of the 50 wineries with cellar doors.

Roadside signs signal the places to stop for farm fresh produce, from pick your own strawberries to organic vegetables. Choose from chocolate and cheese makers, cherry growers and fishermen selling the latest catch. Call in at the Red Hill Cool Stores or the Red Hill Market for the best of local produce, all in one spot.

## Our Favourites

Play a round of golf at Moonah Links or The Dunes

Call in at any one of the 50 boutique cellar doors

Catch a wave at Point Leo or Sorrento surf beach

Indulge at Peninsula Hot Springs

Pick strawberries at the Sunny Ridge Farm



Red Hill

## FIND YOUR ACCOMMODATION

REF.	APARTMENTS	PAGE
3	Cape Schanck Lighthouse ★★★	59
2	Peppers Moonah Links Resort ★★★★★	59
REF.	HOTELS	PAGE
1	Fairways Resort, Rosebud ★★★	59
4	Lindenderry Country House Hotel ★★★★★☆	60
5	Woodman Estate ★★★☆	60

## Cape Schanck Lighthouse ★★★



Set on the rugged cliffs at the isolated southern point of the Mornington Peninsula offering three bedroom cottage accommodation.

Town Centre 10km  
Map page 58 Ref. 3

420 Cape Schanck Road, Cape Schanck

### PROPERTY FEATURES:

- Barbecue area ▪ Wood fire
- Wineries nearby ▪ Bushwalking
- Visit a nearby maze
- Tour lighthouse and museum
- Coastal rockpools and fishing
- Parking

### ACCOMMODATION FEATURES:

- Air-conditioning (on request)
- Kitchen with microwave
- Tea/coffee making facilities
- Heating ▪ Ironing facilities

Apartment not serviced



From **\$160** PER ROOM PER NIGHT\*

1 APR – 23 DEC 11, 13 JAN – 31 MAR 12	ADULTS	1 NT	3 NTS	5 NTS
Cottage	1	187	480	800
	2	200	480	800
	3	333	879	1465
	4	347	879	1465

Other prices apply 24 Dec 11 – 12 Jan 12.

**Includes** Light breakfast daily and Lighthouse Museum entry.

**Children** 0 to 4 years – not catered for.  
5 to 10 years – adult prices apply.

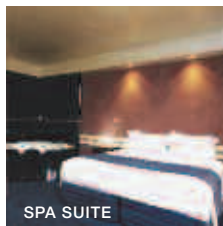
**Max capacity** 8.

**CAPMPE**

### TRAVELPOINT EXCLUSIVE

FREE entry into the Ascombe Maze, Moonlight Sanctuary, Peninsula Hot Springs and a tour of Cape Schanck Lighthouse for 2 adults for stays of 2 nights or more, valid 28 Apr – 31 Oct 11.

## Fairways Resort, Rosebud ★★★★★



Less than 100 metres to the first tee or a short drive to many other great golf courses and attractions on the Mornington Peninsula.

Beach 3km  
Map page 58 Ref. 1

207 Boneo Road, Rosebud

### PROPERTY FEATURES:

- Golf courses (18 hole – 2)
- Restaurant ▪ Barbecue
- Lawn bowling greens (3)
- Bar ▪ Room service (limited)
- Internet facilities ▪ Parking

### ACCOMMODATION FEATURES:

- Air-conditioning ▪ Balcony or patio
- Limited cooking facilities
- Internet access (broadband)
- Ironing facilities ▪ Spa (Spa Suites)
- Hair dryer ▪ All rooms non smoking

Room serviced daily



From **\$116** PER ROOM PER NIGHT\*

1 – 30 APR, 10 – 12 JUN, 1 OCT 11 – 31 MAR 12	ADULTS	1 NT	3 NTS	5 NTS
King Suite (Sun – Fri)	1 to 2	175	525	875
Spa Suite (Sun – Fri)	1 to 2	195	585	975

1 MAY – 9 JUN, 13 JUN – 30 SEP 11	ADULTS	1 NT	3 NTS	5 NTS
King Suite (Sun – Fri)	1 to 2	145	435	725
Spa Suite (Sun – Fri)	1 to 2	185	555	925

Other prices apply for Saturday night stays.

**Children** 0 to 12 years – free when sharing with an adult and using existing bedding. Cot free of charge.

**Max capacity** 2.

**FAIMPE**

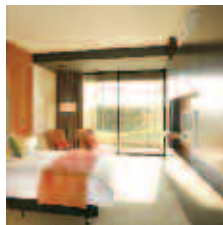
### TRAVELPOINT EXCLUSIVE

FREE light breakfast daily for stays of 2 nights or more, valid 1 May – 30 Sep 11.

### TRAVELPOINT BONUS

FREE Night Offer: Stay 5 nights, pay for 4, valid 1 Apr – 26 Dec 11, 16 Jan – 31 Mar 12.

## Peppers Moonah Links Resort ◆◆◆◆◆



Located on the Mornington Peninsula, this resort features two 18 hole championship golf courses and an Endota Spa.

Town Centre 5km  
Map page 58 Ref. 2

55 Peter Thompson Drive, Fingal

### PROPERTY FEATURES:

- Endota Day Spa ▪ 24 hour reception
- Room service (limited) ▪ Restaurant ▪ Bar
- Golf courses (2) ▪ Tennis court ▪ Pool
- Gymnasium ▪ Parking
- Laundry/dry cleaning service

### ACCOMMODATION FEATURES:

- Air-conditioning ▪ Balcony
- Tea/coffee making facilities
- Kitchen with microwave (1 Bedrooms)
- Internet access ▪ CD player
- Ironing facilities ▪ Hair dryer

Room serviced daily



From **\$338** PER ROOM PER NIGHT\*

1 – 21 APR, 27 APR – 21 DEC 11, 1 FEB – 31 MAR 12	ADULTS	1 NT	2 NTS	3 NTS
1 Bedroom Suite	1 to 2	338	676	1014
Open Suite	1 to 2	338	676	1014

22 – 26 APR, 22 DEC 11 – 31 JAN 12	ADULTS	2 NTS	3 NTS	4 NTS
1 Bedroom Suite	1 to 2	778	1167	1556
Open Suite	1 to 2	778	1167	1556

**Children** 0 to 12 years – free when sharing with an adult and using existing bedding.

**Max capacity** 1 Bedroom Suite – 3, Open Suite – 2.

**PEPMPE**



Flinders Golf Club

# Mornington Peninsula

## Lindenderry Country House Hotel ★★★★★



142 Arthurs Seat Road, Red Hill

Created in the tradition of an elegant European country estate hotel, Lindenderry Country House Hotel is a secluded retreat in the heart of the beautiful Mornington Peninsula, just an hour's drive from Melbourne.

Set in a magnificent 30 acre estate amid gardens, lawns and a vineyard, Lindenderry has a relaxed, indulgent air and breathes understated elegance. There are just 40 guest rooms, each individually decorated and revealing its own view of private courtyards or the exquisite gardens and vineyards surrounding the hotel.

The dining experience has been just as thoughtfully planned, with the Linden Tree fine dining restaurant, a flower-filled dining courtyard overlooking the gardens and a welcoming cellar door. Guest lounges and a library with open fires provide perfect retreats for reflection, reading or quiet conversation.

The combination of superb cuisine, unparalleled service, and magnificent surroundings delight all those who visit.

### PROPERTY FEATURES:

- Endota Day Spa ■ Restaurant
- Room service (limited) ■ Bar ■ Spa
- Pool (heated indoor) ■ DVD library
- Tennis courts (2) ■ Guest lounges
- Internet access (wireless)
- Library ■ Non smoking ■ Parking

### ACCOMMODATION FEATURES:

- Air-conditioning ■ Bathrobes
- Tea/coffee making facilities
- Mini bar ■ Ironing facilities ■ Hair dryer
- Spa bath (Balcony and Garden rooms)

### Room serviced daily

Town Centre 2km  
Map page 58 Ref. 4



BALCONY



GUEST LOUNGE

From **\$263** PER ROOM PER NIGHT\*



1 APR 11 – 31 MAR 12 <sup>^</sup>	ADULTS	1 NT	2 NTS	4 NTS
Courtyard	2	350	700	1050
Vineyard	2	450	900	1350
Garden	2	550	1100	1650
Balcony	2	624	1248	1872

Sole use prices also available.

<b>Includes</b>	Full breakfast daily.
-----------------	-----------------------

**Children** 0 to 3 years – cot free of charge.  
4 to 15 years – \$55 per child per night when sharing with an adult.

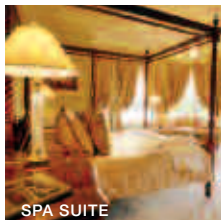
**Max capacity** Courtyard – 2, Vineyard – 3, Garden/Balcony – 3 adults or 2 adults/2 children.

LINMPE

### TRAVELPOINT BONUS

<sup>^</sup> FREE Night Offer: Stay 4 nights, pay for 3.  
(4 night price includes 1 free night)

## Woodman Estate ★★★★★



SPA SUITE

Your complete destination, with accommodation, restaurant dining and an indulgent spa retreat complemented by magnificent lake views.

Town Centre 9km  
Map page 58 Ref. 5

136 Graydens Road, Moorooduc

### PROPERTY FEATURES:

- Day spa ■ Restaurant ■ Bar
- Formal gardens ■ Private lake
- Billiard room ■ Tennis court ■ Fireplace
- Sitting room with board games, books and magazines ■ Parking

### ACCOMMODATION FEATURES:

- Tea/coffee making facilities
- Mini bar ■ CD/DVD player
- Fireplace (Lakeside Chalets)
- Spa bath (except Garden Rooms)
- Bathrobes and slippers ■ Hair dryer
- All rooms non smoking

### Room serviced daily



From **\$335** PER ROOM PER NIGHT\*

1 APR 11 – 31 MAR 12	ADULTS	1 NT	2 NTS	3 NTS
Garden Room	1	335	670	1005
	2	360	720	1080
Spa Suite	1	535	1070	1605
	2	560	1120	1680
Lakeside Chalet	1	770	1540	2310
	2	795	1590	2385

2 night minimum stay applies 22 – 25 Apr, 11 – 12 Jun, 29 – 31 Oct, 25 Dec 11 – 2 Jan, 11 – 12 Mar 12.

<b>Includes</b>	Full breakfast daily.
-----------------	-----------------------

**Children** 0 to 2 years – cot/bed charge payable direct.  
3 to 12 years – adult prices apply. Children catered for in Lakeside Chalets only.

**Max capacity** 3.

WOOMPE

## Mornington Attractions Pass



The Mornington Peninsula Attractions Pass gives you great discounts on admission plus fabulous experiences at four of the best attractions of the Mornington Peninsula. Just an hour's drive south east of Melbourne, the Attractions Pass is a great way to explore this picturesque region.

### INCLUDES:

- Ashcombe Maze & Lavender Gardens admission, self guided tour and bonus lavender gift
- Cape Schanck Lighthouse guided tour and entry to the Lighthouse Museum

- Moonlit Sanctuary daytime entry plus free Koala photo opportunity and Australian bush food tasting
- Sunny Ridge Strawberry Farm entry
- Exclusive discounts at Rye Hotel, Sunny Ridge Strawberry Farm and Box Stallion Winery

**Open:** Daily except Christmas Day

PRICE PER PERSON:	
Adult	\$49
Child 4-14 years	\$39

MORNINGTON ATTRACTION PASS MORMPE