



Boyntons Winery, High Country

Our Favourites

Explore the Grampians National Park

Pan for gold at Sovereign Hill, Ballarat

View an extensive collection of art at the Bendigo Art Gallery

Visit Brown Brothers winery in Milawa

Dine at Stefano's in Mildura

Welcome to country life in Victoria. Rich in history and loaded with things to see and do, tick off an entire holiday wish list with one great experience after another.

Delve into the mining history of the Goldfields. Explore historic Ballarat with its fantastic galleries, gardens and museums. Ballarat's most fabulous attraction has to be Sovereign Hill. This living outdoor museum on a former gold mining site recreates life in the 1850s.

Time for a little indulgence? The pamper spots are so abundant in Daylesford and Hepburn Springs they call it Spa Country. The focus is on all things pampering and wellbeing, with Australia's greatest concentration of natural mineral springs. From lavender gardens, antique stores and galleries featuring local artists, to fine dining restaurants showcasing local food, Spa Country is a treasure trove of wonderful experiences.

Pick up the pace with a walk in breathtaking scenery through The Grampians, a prime spot for outdoor lovers. The Murray River and the water based activities that come with it are the major drawcard of Mildura and Echuca. Back on the culinary trail, wander the citrus groves and vineyards of Mildura before continuing the search for great produce in Milawa, one of the country's oldest gourmet regions in Victoria's High Country.

No visit to the High Country is complete without some mountain adventures. Hit the ski slopes of Falls Creek in a winter wonderland. Even in the warmer months, choose from a full calendar of events, pedal your way across the alps or just enjoy the wildflowers, farm fresh produce and mountain walks.



FIND YOUR ACCOMMODATION

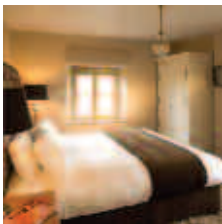
REF.	PROPERTY	PAGE
8	Bellellen Homestead, The Grampians ★★★★★	66
3	Boathaven Holiday Park ★★★★★	67
5	Country Comfort Shepparton ★★★☆	67
2	Echuca Nirebo Motel ★★★★★	68
1	Golden River Holiday Park, Mildura ★★★★★	68
6	Homestead Motor Inn ★★★☆	66
4	Lindenwarrah Country House Hotel ★★★★★	67
9	Peppers Springs Retreat & Spa ★★★★★	66
7	Quay West Resort & Spa Falls Creek ★★★★★	67
10	Sovereign Hill Lodge, Ballarat ★★★☆	66
2	Yarraby Holiday Park, Echuca ★★★★★	68

Other properties available

10	Mercure Ballarat Hotel and Convention Centre ★★★★★	-
----	--	---



Peppers Springs Retreat & Spa ★★★★★



Set in the heart of Victoria's Spa Country at Hepburn Springs and just over an hour drive from Melbourne.

Town Centre 3km
Map page 65 Ref. 9

124 Main Road, Hepburn Springs

PROPERTY FEATURES:

- Mineral Spa (with relaxation room, mineral water plunge pools, saunas and steam rooms) ■ Restaurant ■ Bar
- Room service (limited)
- Yoga/Tai Chi ■ Billiard room
- Guest lounge ■ Parking

ACCOMMODATION FEATURES:

- Air-conditioning ■ Mini bar ■ CD player
- Tea/coffee making facilities
- Spa bath (except Traditional rooms)
- Internet access (broadband)
- Ironing facilities ■ Hair dryer

Room serviced daily



From **\$269** PER ROOM PER NIGHT*

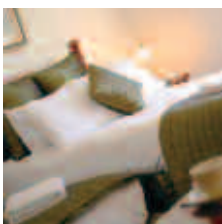
1 APR 11 – 31 MAR 12	ADULTS	1 NT	2 NTS	3 NTS
Traditional Hotel/Traditional Garden	1 to 2	269	538	807
Hotel Spa/Garden Spa	1 to 2	322	644	966
Contemporary Superior	1 to 2	371	742	1113

Children 0 to 12 years – free when sharing with an adult and using existing bedding.

Max capacity Traditional Hotel/Contemporary Superior – 2, Traditional Garden/Hotel Spa/ Garden Spa – 3.

PEPHEP

Sovereign Hill Lodge ★★★☆



Ideally situated on-site at Sovereign Hill, Ballarat, a 90 minute drive from Melbourne. The Lodge is within close proximity to all Ballarat's attractions.

Town Centre 6km
Map page 65 Ref. 10

Magpie Street, Ballarat

PROPERTY FEATURES:

- Relive history all day and night
- Short stroll to Sovereign Hill Township
- Close to all of Ballarat's attractions
- Lounge
- Bar
- Fireplace
- Parking

ACCOMMODATION FEATURES:

- Air-conditioning
- Tea/coffee making facilities
- Ironing facilities
- Hair dryer

Room serviced daily

From **\$145** PER ROOM PER NIGHT*

1 APR 11 – 31 MAR 12	ADULTS	1 NT	2 NTS	3 NTS
Standard	1	145	290	435
	2	165	330	495

Includes Light breakfast in room daily.

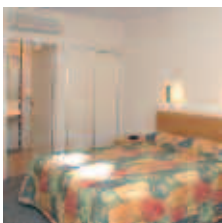
Entry into Sovereign Hill not included.

Children 0 to 4 years – cot/bed charge payable direct. 5 to 15 years – adult prices apply.

Max capacity 3 adults or 2 adults/2 children.

SHLBLR

Homestead Motor Inn & Apartments, Bendigo ★★★☆



Situated close to Bendigo City Centre, the motel combines quality accommodation and leisure facilities.

Town Centre 4km
Map page 65 Ref. 6

508 High Street, Golden Square, Bendigo

PROPERTY FEATURES:

- Room service (limited)
- Barbecue area ■ Pool
- Guest laundry
- Internet access (wireless)
- Parking ■ Non smoking

ACCOMMODATION FEATURES:

- Air-conditioning
- Limited cooking facilities with microwave (Executive rooms)
- Tea/coffee making facilities ■ Mini bar
- Cable TV ■ Internet access (wireless)
- Ironing facilities ■ Hair dryer

Room serviced daily

From **\$136** PER ROOM PER NIGHT*

1 APR – 14 JUL, 18 – 27 JUL, 1 AUG – 10 NOV, 14 NOV 11 – 25 JAN, 30 JAN – 31 MAR 12	ADULTS	1 NT	2 NTS	3 NTS
Standard	1 to 2	136	272	408
Executive	1 to 2	165	330	495

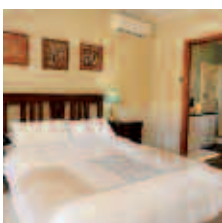
Other prices apply 15 – 17 Jul, 28 – 31 Jul, 11 – 13 Nov 11, 26 – 29 Jan 12.

Children 0 to 12 years – free when sharing with 2 adults and using existing bedding. Cot free of charge.

Max capacity Standard – 3, Executive – 2.

HOMBXG

Bellellen Homestead, The Grampians ★★★★★☆



A traditional bed and breakfast offering stunning views of the Grampians. Features an array of flowers and birds throughout the garden.

Town Centre 12km
Map page 65 Ref. 8

17 Bellellen Road, Black Range

PROPERTY FEATURES:

- Bar ■ Barbecue area
- DVD, CD and book library
- Guest lounge
- Laundry service
- Non smoking ■ Parking

ACCOMMODATION FEATURES:

- Air-conditioning ■ Heating
- Tea/coffee making facilities
- Barbecue
- Internet access (wireless)
- Cable TV ■ CD/DVD player
- Bathrobes
- Hair dryer ■ Ironing facilities

Room serviced daily

From **\$208** PER ROOM PER NIGHT*

1 APR 11 – 31 MAR 12	ADULTS	1 NT	2 NTS	3 NTS
Standard	1 to 2	208	416	624

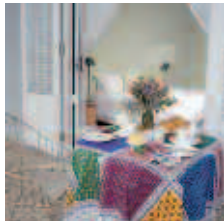
Includes Full breakfast and newspaper daily.

Children 0 to 4 years – not catered for. 5 to 14 years – adult prices apply.

Max capacity 2.

BELVIC

Lindenwarrah Country House Hotel ★★★★★



Situated on eight acres of vineyard in the heart of the High Country's Milawa Gourmet region, opposite Brown Brothers Winery.

Town Centre 200m
Map page 65 Ref. 4

Milawa-Bobinawarra Road, Milawa

PROPERTY FEATURES:

- Restaurant ▪ Bar ▪ Pool (solar heated)
- Rooftop terrace ▪ Room service (limited)
- Internet access (wireless)
- Book and DVD library ▪ Guest lounges
- Bicycle hire ▪ Non smoking ▪ Parking

ACCOMMODATION FEATURES:

- Air-conditioning ▪ Mini bar
- Tea/coffee making facilities
- Spa bath (Superior Spa Suites)
- Internet access (wireless)
- Ironing facilities ▪ Hair dryer

Room serviced daily



From **\$206** PER ROOM PER NIGHT*

1 APR 11 – 31 MAR 12	ADULTS	1 NT	2 NTS	4 NTS
Garden View Room	1	274	548	822
	2	299	598	897
Sunset Room	1	315	630	945
	2	340	680	1020
Superior Spa Suite	1	350	700	1050
	2	375	750	1125

Buffalo View Room prices also available.

Includes Light breakfast daily.

Children 0 to 3 years – cot free of charge.
4 to 15 years – \$50 per child per night when sharing with an adult.

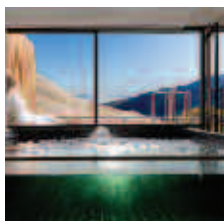
Max capacity 3 adults or 2 adults/2 children.

LCHVIC

TRAVELPOINT BONUS

FREE Night Offer: Stay 4 nights, pay for 3.
(4 night price includes 1 free night)

Quay West Resort & Spa Falls Creek ◆◆◆◆◆



A magnificent alpine resort featuring self-contained accommodation, located at the base of the main ski runs of Falls Creek.

Shop 20m
Map page 65 Ref. 7

17 Bogong High Plains Road, Falls Creek

PROPERTY FEATURES:

- Day spa ▪ 24 hour reception ▪ Spa ▪ Sauna
- Restaurant ▪ Café ▪ Bar ▪ Retail outlets
- Ski, snowboard and toboggan hire[^]
- Ski lift and chair lift (adjacent)[^]
- Plunge pool (indoor) ▪ Gymnasium

ACCOMMODATION FEATURES:

- Under floor heating ▪ Balcony
- Kitchen ▪ Mini bar ▪ Cable TV
- CD/DVD player ▪ iPod docking station
- Hot tub (most apartments) ▪ Washer/dryer

Note: [^]Available during ski season only.

Apartment serviced every 3 days for stays of 4 nights or more, daily during ski season



From **\$300** PER ROOM PER NIGHT*

1 APR – 12 JUN, 3 OCT – 30 DEC 11, 2 JAN – 9 MAR, 14 – 31 MAR 12	ADULTS	1 NT	3 NTS	5 NTS
1 Bedroom	1 to 2	300	900	1500
2 Bedroom	1 to 4	400	1200	2000
3 Bedroom	1 to 6	500	1500	2500

13 – 30 JUN, 5 SEP – 2 OCT 11 [^]	ADULTS	2 NTS	5 NTS	7 NTS
1 Bedroom	1 to 2	1072	2545	3563
2 Bedroom	1 to 4	1658	3945	5523
3 Bedroom	1 to 6	2352	5595	7833

1 JUL – 4 SEP 11 [^]	ADULTS	2 NTS	5 NTS	7 NTS
1 Bedroom	1 to 2	1720	4080	5712
2 Bedroom	1 to 4	2632	6245	8743
3 Bedroom	1 to 6	3720	8830	12362

Other prices apply 31 Dec 11 – 1 Jan, 10 – 13 Mar 12.

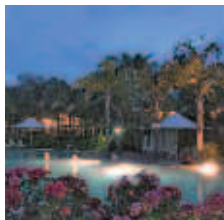
Includes [^] Full breakfast daily.

Children 0 to 12 years – free when sharing with an adult and using existing bedding. Cot free of charge.

Max capacity 1 Brm – 4, 2 Brm – 6, 3 Brm – 8.

QWRVIC

Boathaven Holiday Park, Ebdon ★★★★★



Boathaven Holiday Park offers a combination of lake and poolside villas and park cabins on the banks of Lake Hume Albury-Wodonga.

Wodonga 13km
Map page 65 Ref. 3

33 Boathaven Road, Ebdon

PROPERTY FEATURES:

- Pool (lagoon) ▪ Spa
- Children's playground
- Games room ▪ Tennis court
- Internet facilities
- Guest laundry
- Parking ▪ Non smoking

ACCOMMODATION FEATURES:

- Air-conditioning ▪ Balcony
- Limited cooking facilities with microwave
- Tea/coffee making facilities
- CD/DVD player
- Hair dryer
- Ironing facilities

Cabin serviced weekly

From **\$105** PER ROOM PER NIGHT*

26 APR – 6 JUN, 13 JUN – 23 SEP, 9 – 27 OCT 11	ADULTS	1 NT	2 NTS	3 NTS
Palm Grove Villa	1 to 2	105	210	315
Palm Grove Deluxe	1 to 2	130	250	375
Poolside Villa	1 to 2	130	260	390

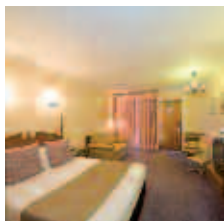
Other prices apply for selected weekends, school holidays and special events.

Children 0 to 1 years – free of charge.
2 to 15 years – adult prices apply.

Max capacity 6.

BOAABX

Country Comfort Shepparton ◆◆◆◆◆



Conveniently located in the heart of the Goulburn Valley and within walking distance to restaurants and shops.

Town Centre 500m
Map page 65 Ref. 5

481 Wyndham Street, Shepparton

PROPERTY FEATURES:

- Restaurant ▪ Bar
- Room service (limited)
- Pools (2 – 1 indoor, 1 outdoor heated in winter)
- Sauna ▪ Spa ▪ Internet access (wireless)
- Guest laundry ▪ Parking
- Non smoking

ACCOMMODATION FEATURES:

- Air-conditioning ▪ Mini bar
- Tea/coffee making facilities
- Cable TV
- Internet access (wireless)
- Ironing facilities ▪ Hair dryer

Room serviced daily

From **\$173** PER ROOM PER NIGHT*

1 APR 11 – 31 MAR 12	ADULTS	1 NT	2 NTS	3 NTS
Deluxe	1 to 2	173	346	519

Children 0 to 11 years – free when sharing with 2 adults and using existing bedding.

Max capacity 3.

COUVIC

The Murray

Yarraby Holiday Park, Echuca ★★★★★



Yarraby Holiday Park provides guests with a magnificent holiday destination right on the Murray River.

Town Centre 5km
Map page 65 Ref. 2

75 River Avenue, Echuca

PROPERTY FEATURES:

- Barbecue areas (3) ■ Pools (2)
- Tennis courts (2)
- Children's playground
- Games room
- Internet facilities
- Guest laundry
- Parking ■ Non smoking

ACCOMMODATION FEATURES:

- Air-conditioning
- Kitchen with microwave
- Tea/coffee making facilities
- CD/DVD player
- Ironing facilities

Cabin serviced weekly

From **\$120** PER ROOM PER NIGHT*

	ADULTS	1 NT	2 NTS	3 NTS
27 APR – 9 JUN, 14 JUN – 1 SEP 11				
2 Bedroom Holiday Cabin	1 to 2	120	240	360
2 Bedroom Courtside Villa	1 to 2	140	280	420
3 Bedroom Riverview Cabin	4	170	340	510
3 Bedroom Deluxe Spa	4	200	400	600

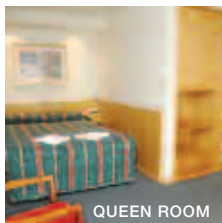
Other prices apply for selected weekends, school holidays and special events.

Children 0 to 1 years – free of charge.
2 to 15 years – adult prices apply.

Max capacity 2 Bedroom Holiday Cabin/2 Bedroom Courtside Villa – 6, 3 Bedroom Riverview Cabin/3 Bedroom Deluxe Spa – 9.

YARVIC

Nirebo Motel Echuca ★★★★★



A great variety of room types and ideally located close to the historic port, restaurants and all Echuca has to offer.

Town Centre 200m
Map page 65 Ref. 2

251 Hare Street, Echuca

PROPERTY FEATURES:

- Room service (limited)
- Pool ■ Spa
- Internet access (wireless)
- Guest laundry
- Dry cleaning service
- Parking ■ Non smoking

ACCOMMODATION FEATURES:

- Air-conditioning ■ Cable TV
- Tea/coffee making facilities
- Internet access (wireless)
- Ironing facilities ■ Hair dryer

Room serviced daily



From **\$105** PER ROOM PER NIGHT*

	ADULTS	1 NT	2 NTS	3 NTS
1 – 21 APR, 27 APR – 9 JUN, 13 JUN – 31 AUG 11				
Petite Room	1 to 2	105	210	315
Queen Room	1 to 2	125	250	375

	ADULTS	1 NT	2 NTS	3 NTS
1 – 29 SEP, 6 OCT – 26 DEC 11, 3 JAN – 9 FEB, 13 – 16 FEB, 20 FEB – 8 MAR, 12 – 31 MAR 12				
Petite Room	1 to 2	125	250	375
Queen Room	1 to 2	145	290	435

Other prices apply 22 – 26 Apr, 10 – 12 Jun, 30 Sep – 5 Oct, 27 Dec 11 – 2 Jan, 10 – 12 Feb, 17 – 19 Feb, 9 – 11 Mar 12. Other room types also available.

Children 0 to 1 years – cot/bed charge payable direct.
2 to 10 years – adult prices apply.

Max capacity 2.

NIRVIC

TRAVELPOINT BONUS

FREE room service light breakfast daily for stays of 3 nights or MORE, valid 1 – 21 Apr, 27 Apr – 9 Jun, 13 Jun – 31 Aug 11.

Golden River Holiday Park, Mildura ★★★★★



Quality holiday park accommodation located on over 2.8 hectares of trees and lawns on the banks of the Murray River.

Town Centre 4km
Map page 65 Ref. 1

199-205 Flora Avenue, Mildura

PROPERTY FEATURES:

- Barbecue areas (2)
- Pool
- Children's playground
- Internet facilities
- Guest laundry
- Parking

ACCOMMODATION FEATURES:

- Air-conditioning
- Kitchen with microwave
- Tea/coffee making facilities
- CD/DVD player
- Ironing facilities
- Hair dryer

Cabin serviced weekly

From **\$100** PER ROOM PER NIGHT*

	ADULTS	1 NT	2 NTS	3 NTS
1 – 8 APR, 27 APR – 9 JUN, 14 JUN – 23 SEP, 11 OCT – 22 DEC 11, 1 FEB – 8 MAR, 13 – 31 MAR 12				
Villa	1 to 2	100	200	300
Executive Cabin/Executive Spa Cabin	1 to 2	140	280	420
3 Bedroom Riverview	6	200	400	600

	ADULTS	1 NT	2 NTS	3 NTS
9 – 26 APR, 23 DEC 11 – 31 JAN 12				
Villa	1 to 2	155	310	465
Executive Cabin/Executive Spa Cabin	1 to 2	200	400	600
3 Bedroom Riverview	6	260	520	780

Other prices apply 10 – 13 Jun, 24 Sep – 10 Oct 11, 9 – 12 Mar 12.

Children 0 to 1 years – free of charge.
2 to 15 years – adult prices apply.

Max capacity Villa – 5, Executive Cabin/Executive Spa Cabin – 6, 3 Bedroom Riverview – 7.

GOLMQL

Echuca Wine Tour



A relaxing and memorable experience sampling the variety of wineries on offer in the Echuca-Moama wine region. The region is gaining a reputation as one of the best winegrowing districts in Victoria. A haven for wine connoisseurs, the twin towns have more than 800 hectares of vines flourishing with new growth each year. This full day tour will satisfy all lovers of wine and allow you to experience a good selection of wineries the region offers.

INCLUDES:

- Tastings at 4 to 5 wineries
- 2 course lunch with glass of wine
- Return transfers from Echuca accommodation

Departs: Daily at 10am

Returns: 5pm

PRICE PER PERSON:

Adult \$125

Not suitable for children under 18 years. Half day tour also available.

FOR THE LOVE OF GRAPE

FORPTA