

# Mount Cook and Wanaka



Lake Wanaka

## Our Favourites

Discover Mount Cook, New Zealand's highest peak

Ski at Cardrona or Treble Cone

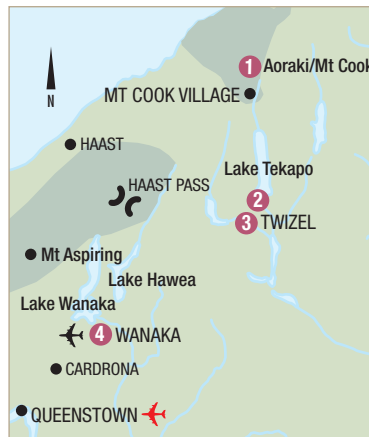
Get out on the water of Lake Wanaka – try water skiing, wind surfing or kayaking

Have lunch or a relaxing ale at the historic Cardrona Hotel

Be captivated by New Zealand's tallest mountain, Mount Cook, a haven for adventure climbs that reward with stunning views of the Southern Alps. There are many walks and climbs to choose from, all will give breathtaking views of the alpine scenery and surrounding countryside. For a change of pace, the The Church of the Good Shepherd on the shores of Lake Tekapo provides stunning views perfectly framed by its altar window.

Inland at Wanaka, relax at the foothills of the Southern Alps, where, in winter the ski fields are second to none, and as the weather warms, watersports take over on the lake.

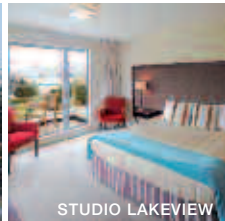
Lake Wanaka and nearby Lake Hawea are two of the prettiest lakes in New Zealand. The dramatically blue water is surrounded by mountains and trees that put on a show of colour in autumn, a perfect setting to unwind and rejuvenate.



## FIND YOUR ACCOMMODATION

REF.	APARTMENTS	PAGE
4	Alpine Resort Wanaka ♦♦♦♦	69
4	Edgewater, Lake Wanaka ★★★★★	69
2	Peppers Bluewater Resort, Lake Tekapo ★★★★★	68
REF.	HOTELS	PAGE
4	Grand Mercure Oakridge Hotel, Wanaka ★★★★★	69
3	MacKenzie Country Inn, Twizel ★★★☆	68
4	Maple Lodge, Wanaka ★★★★★	70
4	Riverrun, Wanaka ♦♦♦♦♦	70
Other properties available		
1	The Hermitage, Aoraki Mt Cook ★★★★★	-
4	Te Wanaka Lodge ★★★★★	-

## Peppers Bluewater Resort, Lake Tekapo ★★★★★



Ideally placed for adventure and leisure near the shores of dazzling Lake Tekapo and surrounded by the spectacular Southern Alps.  
Town Centre 200m  
Map page 68 Ref. 2

State Highway 8, Lake Tekapo

### PROPERTY FEATURES:

- 24 hour reception
- Restaurant
- Guest laundry
- Bar
- Parking

### ACCOMMODATION FEATURES:

- Air-conditioning
- Balcony or patio
- Kitchen with microwave and dishwasher (Villas)
- Cable TV
- CD/DVD player (Villas)
- Internet access (wireless)
- Washer/dryer (2 and 3 Bedroom Villas)
- 2 bathrooms (2 and 3 Bedroom Villas)
- Ironing facilities
- All rooms non smoking

Room serviced daily



From \$88 PER ROOM PER NIGHT\*

1 APR – 24 AUG 11	ADULTS	1 NT	2 NTS	5 NTS
Hotel	1 to 2	103	175	438
Studio Lake View	1 to 2	186	320	800
1 Bedroom Mountain View Villa	1 to 2	214	377	942
1 Bedroom Lake View Villa	1 to 2	238	424	1060
2 Bedroom Lake View Villa	1 to 4	286	522	1304
3 Bedroom Lake View Villa	1 to 6	375	699	1746
25 AUG 11 – 31 MAR 12	ADULTS	1 NT	3 NTS	5 NTS
Hotel	1 to 2	115	343	572
Studio Lake View	1 to 2	228	684	1139
1 Bedroom Mountain View Villa	1 to 2	257	769	1281
1 Bedroom Lake View Villa	1 to 2	280	840	1399
2 Bedroom Lake View Villa	1 to 4	329	986	1643
3 Bedroom Lake View Villa	1 to 6	417	1251	2084

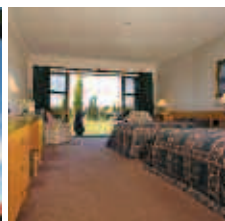
2 and 3 Bedroom Mountain View prices also available.

**Children** 0 to 12 years – free when sharing with an adult and using existing bedding.

**Max capacity** Hotel/Studio – 2, 1 Bedrooms – 3, 2 Bedroom – 5, 3 Bedroom – 7.

PEPTEK

## MacKenzie Country Inn, Twizel ★★★☆



Featuring natural stone, cosy fires and expansive lawns, this is the ultimate place to relax after a day of exploring the Aoraki Mount Cook MacKenzie region.  
Town Centre 800m  
Map page 68 Ref. 3

Corner Ostler and Wairepo Roads, Twizel

### PROPERTY FEATURES:

- Restaurant
- Bar
- Guest lounge
- Fireplace
- Internet access (wireless)
- Guest laundry
- Parking
- Non smoking

### ACCOMMODATION FEATURES:

- Balcony or patio
- Tea/coffee making facilities
- Internet access (wireless)
- Ironing facilities
- Hair dryer

Room serviced daily



From \$130 PER ROOM PER NIGHT\*

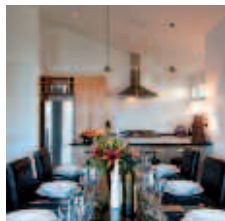
1 – 30 APR, 1 OCT 11 – 31 MAR 12	ADULTS	1 NT	3 NTS	5 NTS
Superior	1 to 2	156	466	777
Deluxe	1 to 2	175	525	875
1 MAY 11 – 30 SEP 11	ADULTS	1 NT	3 NTS	5 NTS
Superior	1 to 2	130	388	647
Deluxe	1 to 2	149	447	745

**Children** 0 to 12 years – 1 child free when sharing with an adult and using existing bedding. Cot free of charge.

**Max capacity** 4.

MACTWZ

## Alpine Resort Wanaka ◆◆◆◆



Set in the spectacular Southern Lakes region, offering spacious apartments with easy access to Wanaka's ski fields and attractions.

Town Centre 1.5km  
Map page 68 Ref. 4

144-154 Anderson Road, Wanaka

### PROPERTY FEATURES:

- Pool (heated in summer) ■ Sauna
- Gymnasium ■ Tennis court
- Games room ■ Barbecue area
- Parking ■ Non smoking
- Courtesy airport transfers available if pre-booked

### ACCOMMODATION FEATURES:

- Patio ■ Barbecue ■ Cable TV
- Kitchen with microwave and dishwasher
- CD/DVD player
- Internet access (wireless)
- Ironing facilities
- Washer/dryer ■ Hair dryer

Mini service daily

From **\$197** PER ROOM PER NIGHT\*

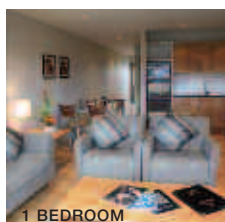
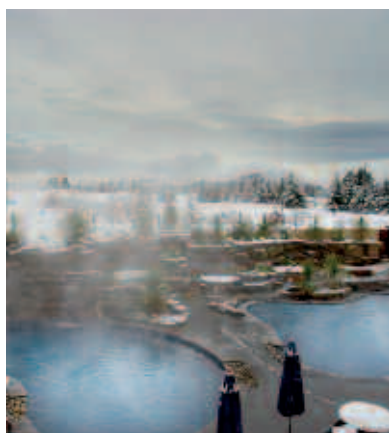
1 APR – 30 JUN 11	ADULTS	1 NT	3 NTS	5 NTS
1 Bedroom	1 to 2	197	589	981
2 Bedroom	1 to 4	222	665	1107
2 Bedroom 2 Bathroom	1 to 4	262	785	1308
3 Bedroom	1 to 6	298	892	1486
16 AUG – 30 SEP, 1 DEC 11 – 31 MAR 12	ADULTS	1 NT	3 NTS	5 NTS
1 Bedroom	1 to 2	264	790	1316
2 Bedroom	1 to 4	289	866	1442
2 Bedroom 2 Bathroom	1 to 4	330	988	1647
3 Bedroom	1 to 6	365	1095	1824
1 OCT – 30 NOV 11	ADULTS	1 NT	3 NTS	5 NTS
1 Bedroom	1 to 2	197	589	981
2 Bedroom	1 to 4	222	665	1107
2 Bedroom 2 Bathroom	1 to 4	263	788	1312
3 Bedroom	1 to 6	298	894	1490

Other prices apply 1 Jul – 15 Aug 11.

**Children** 0 to 1 years – cot/bed charge payable direct.  
2 to 14 years – adult prices apply.

**Max capacity** 1 Bedroom – 2, 2 Bedrooms – 5, 3 Bedroom – 7.  
**ALPWKA**

## Grand Mercure Oakridge Resort Wanaka ★★★★★



Set in a stunning mountain landscape offering majestic views overlooking the Southern Alps; providing guests with a unique and relaxing experience.

Town Centre 2km  
Map page 68 Ref. 4

Corner Cardrona Valley and Studholme Roads, Wanaka

### PROPERTY FEATURES:

- Day spa ■ 24 hour reception
- Restaurants (2) ■ Room service (24 hour)
- Pools (3 heated – 2 outdoor, 1 lap)
- Bars (2) ■ Rock pools (7 heated)
- Gymnasium ■ Sauna ■ Guest laundry

### ACCOMMODATION FEATURES:

- Air-conditioning ■ CD/DVD player
- Tea/coffee making facilities ■ Mini bar
- Kitchen with microwave (1 Bedrooms)
- Cable TV ■ Internet access (wireless)
- Washer/dryer (most 1 Bedrooms)

Room serviced daily



From **\$127** PER ROOM PER NIGHT\*

1 APR – 30 JUN, 1 NOV – 31 DEC 11	ADULTS	1 NT	3 NTS	5 NTS
Standard	1 to 2	127	379	631
1 Bedroom^	1 to 2	212	636	1060
1 JUL – 31 OCT 11, 1 JAN – 31 MAR 12	ADULTS	1 NT	3 NTS	5 NTS
Standard	1 to 2	157	471	784
1 Bedroom^	1 to 2	244	731	1218

Superior, Studio Suite and 2 Bedroom prices also available.

**Children** 0 to 11 years – up to 2 children free when sharing with 2 adults and using existing bedding.

**Max capacity** Standard – 2, 1 Bedroom – 3 adults or 2 adults/2 children.  
**GRAWKA**

### TRAVELPOINT BONUS

FREE buffet breakfast for 2 adults daily for stays of 4 nights or more, valid 1 – 30 Apr, 15 Oct 11 – 31 Mar 12.

^ Receive two FREE 30 minute massages per room for stays of 5 nights or more.

Offers not combinable.

## Edgewater, Lake Wanaka ★★★★★



Sargood Drive, Lake Wanaka

Edgewater lies right on the water's edge of Lake Wanaka. It is the perfect destination to experience all that Central Otago's four seasons have to offer.

Set amongst the spacious surrounds are guest rooms, all with expansive views of the lake and mountains. Enjoy kayaking on the lake directly from the front of Edgewater, indulge in some wine tasting in the region, cruise Lake Wanaka or ski the slopes in winter.

Edgewater is only minutes from the heart of Wanaka. Amble along the lake hugging walkway or drive a few minutes to explore the boutique shops, engage with locals and enjoy the inviting atmosphere of Wanaka.

### PROPERTY FEATURES:

- 24 hour reception
- Restaurant ■ Bar ■ Café
- Room service (limited)
- Children's playground ■ Putting green
- Sauna ■ Spa ■ Tennis courts (2)
- Guest lounge ■ Guest laundry
- Courtesy airport transfers (available if pre-booked)

### ACCOMMODATION FEATURES:

- Lake views ■ Balcony or patio
- Fan ■ Mini bar ■ Cable TV
- Limited cooking facilities with microwave (except Hotel rooms)
- Washer/dryer (except Hotel rooms)

Room serviced daily

Town Centre 2km  
Map page 68 Ref. 4



From **\$177** PER ROOM PER NIGHT\*



1 APR 11 – 31 MAR 12	ADULTS	1 NT	3 NTS	7 NTS
Hotel	1 to 2	177	530	1236
1 Bedroom Suite	1 to 2	247	740	1501
2 Bedroom Apartment	1 to 4	392	1175	2741

**Children** 0 to 12 years – free when sharing with 2 adults and using existing bedding. Cot free of charge.

**Max capacity** Hotel – 3, 1 Bedroom Suite – 4, 2 Bedroom Apartment – 6.

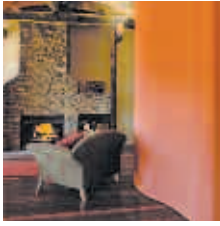
**EDGWKA**

### TRAVELPOINT BONUS

FREE full breakfast daily for stays in a 1 Bedroom Suite.

# Mount Cook and Wanaka

## Riverrun, Wanaka ◆◆◆◆◆



Offering seclusion, fine food, wine and spectacular views, the lodge is surrounded by 500 riverside acres with walks and bike trails.

Town Centre 5km  
Map page 68 Ref. 4

86 Halliday Road, Wanaka

### PROPERTY FEATURES:

- Restaurant ▪ Bar
- Guest lounge ▪ Fireplace
- Tea/coffee making room ▪ Spa
- Bicycle hire ▪ Library ▪ CD/DVD library
- Internet access (wireless)
- Ironing facilities ▪ Laundry service
- Parking ▪ Non smoking

### ACCOMMODATION FEATURES:

- Mountain views ▪ Cable TV
- Internet access (wireless)
- Bathrobes ▪ Hair dryer

Room serviced daily



From **\$237** PER ROOM PER NIGHT\*

1 APR – 31 OCT 11	ADULTS	1 NT	2 NTS	4 NTS
Cardrona	1	300	568	946
	2	312	568	946
Clutha	1	379	757	1261
	2	390	757	1261

1 NOV – 23 DEC, 27 DEC 11 – 31 MAR 12	ADULTS	1 NT	3 NTS	5 NTS
Cardrona	1	300	899	1497
	2	316	899	1497
Clutha	1	379	1135	1891
	2	394	1135	1891

Property is closed 24 – 26 Dec 11.

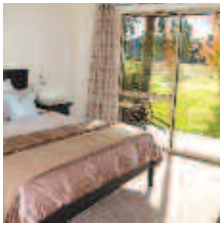
**Includes** Full breakfast and evening canapés daily.

**Children** 0 to 10 years – not catered for.

**Max capacity** 2.

**RIVWKA**

## Maple Lodge, Wanaka ★★★★★



A contemporary seven suite bed and breakfast set in a quiet location, just minutes to Lake Wanaka. Suites offer fabulous mountain views.

Town Centre 3km  
Map page 68 Ref. 4

56 Halliday Road, Wanaka

### PROPERTY FEATURES:

- Library ▪ DVD library ▪ Spa
- Fireplace ▪ Guest lounge
- Internet facilities ▪ Laundry service
- Ironing facilities ▪ Non smoking
- Courtesy airport transfers (available if pre-booked)

### ACCOMMODATION FEATURES:

- Air-conditioning ▪ Balcony or patio
- Tea/coffee making facilities
- Internet access (wireless) ▪ Bathrobes
- Television (on request) ▪ Hair dryer

Room serviced daily



From **\$222** PER ROOM PER NIGHT\*

1 APR – 30 JUN, 1 OCT – 20 DEC 11	ADULTS	1 NT	3 NTS	5 NTS
Deluxe Suite	1 to 2	222	665	1107
Premium Suite	1 to 2	257	771	1285

1 JUL – 30 SEP, 21 DEC 11 – 31 MAR 12	ADULTS	1 NT	3 NTS	5 NTS
Deluxe Suite	1 to 2	262	785	1308
Premium Suite	1 to 2	298	892	1486

**Includes** Full breakfast and afternoon tea daily.

**Children** 0 to 4 years – not catered for.  
5 to 11 years – \$32 per child per night.  
Children not catered for in Deluxe Suite.

**Max capacity** Deluxe Suite – 2, Premium Suite – 2 adults/1 child.

**MAPWKA**

## Grand Traverse Scenic Flight



The flight of a lifetime, The 'Grand Traverse' is widely recognised as the premier Aoraki Mount Cook flightseeing experience. It provides fantastic up close views of Mount Cook and Mount Tasman (New Zealand's highest peaks) and encompasses 10 major glaciers including Tasman, Murchison, Franz Josef and Fox glaciers, two World Heritage National Parks and 200 kilometres of New Zealand's most breathtaking scenery.

All aircraft feature wings above to ensure unobstructed viewing below - every passenger is guaranteed a window seat. The pilot will provide an informative and enjoyable commentary in addition to all passengers receiving the Air Safaris Flight Guide and souvenir Flight Certificate.

### INCLUDES:

- 50 minute scenic flight
- Aoraki Mount Cook and Westland Tai Poutini National Parks
- High country sheep stations, deep carved glacial valleys and temperate rain forests
- Ancient glacial deposits and stunning turquoise blue glacial lakes
- Air Safaris Flight Guide and souvenir Flight Certificate ▪ Informative commentary

**Departs:** Daily from Lake Tekapo Airport, State Highway 8, half hourly between 8am – 5pm (Oct – Apr), hourly between 9am – 4pm (May – Sep)

**Duration:** 1 hour

PRICE PER PERSON:	1 APR – 30 SEP 11	1 OCT 11 – 31 MAR 12
Adult	\$233	\$256
Child 3-13 years	\$154	\$170

Prices from Glentanner Park also available.

**AIR SAFARIS**

**AIRTEK**

## Alpine Explorer Helicopter Flight



Experience this magnificent alpine environment with a high alpine flight over the Ben Ohau Mountains.

Fly close to the steep ridges and rise over a mountain pass which reveals superb views out to Aoraki Mount Cook and its surrounding peaks. Prepare yourself for an amazing alpine landing where you will be able to step out of the helicopter and play in the snow.

The Helicopter Line is dedicated to ensuring you experience the best. With a fleet of modern turbine helicopters ideal for scenic flights and pilots with specific experience flying in New Zealand's alpine environments, your enjoyment is paramount.

This scenic flight will take your breath away as you discover that the stunning views of New Zealand's landscapes are always best from above!

### INCLUDES:

- 30 minute helicopter flight (including landing)
- Snow landing ▪ Informative commentary
- Use of headset ▪ Transfer to heli-base
- Landing fees and permits

**Departs:** Daily on demand from The Helicopter Line Office, Glentanner Park, Mount Cook

**Duration:** 30 minutes

PRICE PER PERSON:	1 APR – 30 SEP 11	1 OCT 11 – 31 MAR 12
Adult	\$232	\$240
Child 4-14 years	\$163	\$168

**THE HELICOPTER LINE**

**HLIZQN**