

Our Favourites

Take a guided walk on the Fox or Franz Josef Glacier

See the perfect reflection of the Southern Alps at Lake Matheson

Pan for gold at Shantytown

See the Punakaiki Pancake Rocks and blowholes

Soak in the Glacier Hot Pools



Fox Glacier

FIND YOUR ACCOMMODATION

REF.	APARTMENTS	PAGE
4	58 on Cron Motel, Franz Josef ◆◆◆◆◇	66
4	Glenfern Villas, Franz Josef ★★★★★☆	66
3	Shining Star Chalets, Hokitika ★★★★★☆	65
REF.	HOTELS	PAGE
5	Distinction Te Weheka, Fox Glacier ★★★★★☆	65

Other properties available

1	Breakers Boutique Accommodation ★★★★★	-
4	Franz Josef Glacier Country Retreat ★★★★★☆	-
2	Kingsgate Hotel Greymouth ★★★★★☆	-
4	Scenic Hotel Franz Josef Glacier ◆◆◆◆◇	-
4	Te Waonui Forest Retreat ◆◆◆◆◇	-



Go west and weave your way along this wild coastline.

Old gold mining and jade hunting towns are dotted along the West Coast. Pan for gold at Greymouth, follow the heritage walk at Reefton or shop for jade at Hokitika. Check out the pancake rocks and blowholes at Punakaiki or walk New Zealand's longest swing bridge at Westport.

A guided walk on the Franz Josef or Fox Glacier is a must if you're visiting the West Coast. These giant tongues of ice have squeezed down the valleys to just 250 metres above sea level. With bright blue ice, tight crevasses and stunning scenery, your camera is sure to get a work out!

From thrilling adventures to laid back afternoons, the West Coast has you covered.

Shining Star Chalets, Hokitika ★★★★★☆



Warm, cosy and stylish log chalets nestled in native gardens with direct beach access, ideal for families and couples.

Beachfront
Town Centre 1km
Map page 65 Ref. 3

16 Richards Drive, Hokitika

PROPERTY FEATURES:

- Barbecue area ■ Sauna ■ Spa
- Children's playground ■ DVD library
- Internet access (wireless) ■ Parking
- Guest laundry ■ Non smoking

ACCOMMODATION FEATURES:

- Air-conditioning ■ Balcony
- Barbecue ■ Cable TV
- Limited cooking facilities with microwave
- Internet access (wireless)
- Spa bath (Executive Spa Studios)
- Ironing facilities ■ Hair dryer

Apartment serviced daily



From **\$134** PER ROOM PER NIGHT*

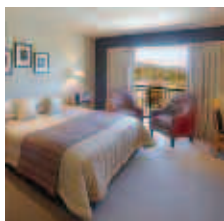
1 APR – 15 AUG 11	ADULTS	1 NT	3 NTS	5 NTS
Studio	1 to 2	134	400	666
1 Bedroom	1 to 2	143	428	713
Executive Spa Studio	1 to 2	153	459	765
2 Bedroom	1 to 4	173	518	863
16 AUG 11 – 31 MAR 12	ADULTS	1 NT	3 NTS	5 NTS
Studio	1 to 2	142	426	710
1 Bedroom	1 to 2	188	563	938
Executive Spa Studio	1 to 2	164	492	820
2 Bedroom	1 to 4	188	563	938

Children 0 to 1 years – cot/bed charge payable direct.
2 to 14 years – adult prices apply.

Max capacity Studio – 3, 1 Bedroom/2 Bedroom – 5,
Executive Spa Studio – 2.

SSCHKK

Distinction Te Weheka, Fox Glacier ★★★★★☆



A modern boutique hotel with a rugged elegance, Te Weheka Inn is nestled beneath the Southern Alps and only a short stroll to the main street.

Town Centre 100m
Map page 65 Ref. 5

Main Road, Fox Glacier

PROPERTY FEATURES:

- Restaurant ■ Library
- Guest lounge with gas fireplace
- Internet access (wireless)
- Guest laundry
- Parking (undercover)
- Lift ■ Non smoking

ACCOMMODATION FEATURES:

- Balcony ■ Fan
- Tea/coffee making facilities
- Internet access (wireless) ■ Bathrobes
- Ironing facilities ■ Hair dryer

Room serviced daily



From **\$243** PER ROOM PER NIGHT*

1 – 30 APR 11	ADULTS	1 NT	3 NTS	5 NTS
Standard	1	275	823	1371
	2	296	887	1478
1 MAY – 31 AUG 11	ADULTS	1 NT	3 NTS	5 NTS
Standard	1	243	728	1214
	2	264	792	1320
1 SEP 11 – 31 MAR 12	ADULTS	1 NT	3 NTS	5 NTS
Standard	1	290	870	1450
	2	312	934	1556

Includes Full breakfast daily.

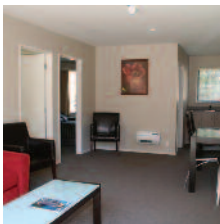
Children 0 to 3 years – free when sharing with an adult and using existing bedding.
4 to 12 years – \$51 per child per night.

Max capacity 3.

TWIFGL

West Coast and Glacier Region

58 on Cron Motel, Franz Josef ◆◆◆◆◆



Set amongst beautiful rainforest, just a short stroll to the village and across from the Glacier Hot Pools Complex.

Town Centre 300m
Map page 65 Ref. 4

58 Cron Street, Franz Josef

PROPERTY FEATURES:

- Barbecue area ■ DVD library
- Internet access (wireless)
- Guest laundry ■ Parking
- Non smoking

ACCOMMODATION FEATURES:

- Limited cooking facilities with microwave (except 2 Bedrooms)
- Cable TV ■ In-room movies (free)
- Internet access (wireless)
- CD/DVD player ■ Hair dryer
- Kitchen with microwave (2 Bedrooms)

Apartment serviced daily



From **\$123** PER ROOM PER NIGHT*

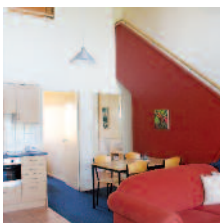
	ADULTS	1 NT	3 NTS	5 NTS
1 – 30 APR 11				
Executive Studio	1 to 2	158	473	788
1 Bedroom	1 to 2	188	563	938
Executive Spa Studio	1 to 2	193	577	962
2 Bedroom	1 to 4	261	783	1304
1 MAY – 15 AUG 11				
Executive Studio	1 to 2	123	369	615
1 Bedroom	1 to 2	134	400	666
Executive Spa Studio	1 to 2	153	459	765
2 Bedroom	1 to 4	173	518	863
16 AUG 11 – 31 MAR 12				
Executive Studio	1 to 2	171	511	851
1 Bedroom	1 to 2	198	594	989
Executive Spa Studio	1 to 2	205	613	1021
2 Bedroom	1 to 4	283	849	1415

Children 0 to 1 years – cot free of charge.
2 to 14 years – adult prices apply.

Max capacity Executive Studio – 3, 1 Bedroom/2 Bedroom – 6, Executive Spa Studio – 2.

CRMWHO

Glenfern Villas, Franz Josef ★★★★★



A range of villas and apartments nestled in a quiet country setting with stunning mountain and native bush views.

Town Centre 3km
Map page 65 Ref. 4

State Highway 6, Franz Josef

PROPERTY FEATURES:

- Tartare Peaks animal park
- Barbecue area ■ Children's playground
- DVD library ■ Internet access (wireless)
- Guest laundry ■ Parking (undercover)
- Non smoking

ACCOMMODATION FEATURES:

- Air-conditioning
- Balcony or patio ■ Cable TV
- Kitchen with microwave
- Internet access (wireless)
- CD/DVD player ■ Hair dryer
- Ironing facilities

Villa serviced daily



From **\$122** PER ROOM PER NIGHT*

	ADULTS	1 NT	3 NTS	5 NTS
1 – 30 APR 11				
1 Bedroom Villa	1 to 2	166	497	828
2 Bedroom Villa	1 to 2	210	629	1048
1 MAY – 31 AUG 11				
1 Bedroom Villa	1 to 2	122	364	607
2 Bedroom Villa	1 to 2	157	471	784
1 SEP 11 – 31 MAR 12				
1 Bedroom Villa	1 to 2	182	546	910
2 Bedroom Villa	1 to 2	231	693	1155

2 night minimum stay applies 24 Dec 11 – 2 Jan, 1 – 29 Feb 12.

Children 0 to 5 years – free when sharing with an adult and using existing bedding.
6 to 14 years – \$15 per child per night.

Max capacity 1 Bedroom Villa – 3, 2 Bedroom Villa – 5.

GLEWHO

Shantytown



Isolation, rugged terrain and extreme weather conditions produced amazing stories of fortitude and ingenuity. Shantytown tells these stories through a fascinating mix of experience and displays.

The Village offers 30 shops and buildings that show a slice of life from the early days. Enjoy a refreshment, browse Reuben Waite's General Store for souvenirs or for a memento of your visit, get an old time photo, (extra charge). Kids will enjoy the flying fox and the Gold-Rush Treasure Hunt.

Ride the Steam Train through native rainforest and stop for a photo, experience the sights and sounds of a working sawmill and watch the mighty sluice gun (water cannon) in action and follow the water races to the gold claim where a gold miner will tutor you to pan for your own gold – a strike is guaranteed!

INCLUDES:

- Entry to over 30 shops and buildings
- 20 minute steam train ride
- Gold panning with guaranteed gold strike

Open: 8:30am – 5pm daily except Christmas Day

PRICE PER PERSON:

Adult	\$24
Senior	\$20
Child 5-17 years	\$12
Family up to 4 adults and 4 children	\$56

SHANTYTOWN

SHAGMN

Cave Tubing and Glow Worms



Your experience begins with an adrenaline buzzing canopy zipline ride through the rainforest to the canyon floor below. After a short walk through the rainforest, begin tubing on a beautiful section of the river. Have fun running the gentle rainforest river rapids and take a ride down the eye bulge rock hydroslide into the cave entrance. Learn of the Maori legend of the Taniwha, the underground cave dragons. Float into the cave in the dark and be awed by the light of a galaxy of glow worms. Spend time with the glow worms whilst enjoying a hot drink and chocolate, before floating out of the cave and finishing with an optional heart stopping cliff jump! Be as adventurous as you choose whilst experiencing the best nature has to offer.

INCLUDES:

- Full instruction provided by experienced guides
- Use of cave thermal wear and wetsuits (drysuits in winter),
- Use of river shoes, helmets and life jackets
- Snack

Departs: Daily from 8 Whall Street, Greymouth at 8am, 1:15pm (Apr – Oct), 8am, 2pm, (Nov – Mar)

Returns: 1pm, 6:15pm (Apr – Oct), 1pm, 7pm (Nov – Mar)

TRAVELPOINT BONUS

FREE Zipline ride through the rainforest canopy per person.

PRICE PER PERSON:

Adult	\$130
Not suitable for children under 5 years.	

WILD WEST ADVENTURE COMPANY

WILGMN

Glacier Hot Pools



Nestled in lush rainforest, the Glacier Hot Pools is a haven of natural tranquillity and the perfect way to unwind and experience a blissful state of pure relaxation after travelling along the West Coast or enjoying one of its many attractions. The three invitingly warm main pools and three secluded private pools are nestled within the native bush and birdlife creating a tranquil space to revive your body, mind and spirit.

A totally unique, romantic, oasis in the rainforest, the private pools are set back on the property and surrounded by the majestic rainforest, offering the very best in seclusion. The private pools have their own changing facilities with towels provided, as well as complimentary entry into the public pools.

An exclusive massage facility secluded within the rainforest is an oasis of tranquillity overlooking the natural setting, the perfect place to relax and rejuvenate.

INCLUDES:

- Entry to Public Pools ■ Use of towels
- 45 minute Private Pool session (Private Pool option)
- 30 minute massage (Massage option)

Open: 12 noon – 10pm daily

Duration: Private Pools: 45 minutes, Massage: 30 minutes

PRICE PER PERSON:

Private Pools	\$34 [^]
Public Pools and Massage	\$86
Private Pools and Massage	\$101 [^]

[^] Minimum 2 adults.

GLACIER HOT POOLS

GHPWHO

Half Day Fox Glacier Walk



This popular walk is a great introduction to the frozen world of Fox Glacier. Fox Glacier Guiding's friendly guides will lead you onto the ice via a secret track through ferns and regenerating temperate rainforest from previous glacial advances. Using crampons specially designed for the ice conditions, follow the ice steps cut by the guides. Whilst walking on the glacier and viewing stunning ice features, the guides will share their enthusiasm and knowledge of the geology of the area amongst crevasses and ice ridges that lead onto the middle of the glacier for spectacular views of the icefall and lower glacier.

The walk involves steady, well-graded uphill walking for 45 minutes and a moderate to good level of fitness and agility is required. At least one hour is spent on the ice (conditions permitting).

INCLUDES:

- Experienced guide
- Use of leather boots, woollen socks and waterproof clothing
- Use of crampons and alpenstock

Departs: Daily from the Fox Glacier Guiding Base at 8:35am, 1:35pm (additional departures available in summer months)

Duration: 4 hours

PRICE:	1 APR – 30 SEP 11	1 OCT 11 – 31 MAR 12
Adult	\$78	\$86
Child 7-16 years	\$62	\$70

FOX GLACIER GUIDING

ALPFGL

Twin Glacier Helicopter Flight



The rugged West Coast is hemmed between the Tasman Sea and the imposing Southern Alps, making for spectacular contrasts in the surrounding scenery. Fly over two of New Zealand's most famous glaciers and land at the head of either the Franz Josef Glacier or Fox Glacier. View the incredible natural phenomenon of the glacier as it winds slowly down the carved valleys from its origin in the mountains high above you.

The Helicopter Line fly from both Franz Josef Glacier and Fox Glacier villages, with an operating base situated on the main road of each.

INCLUDES:

- 30 minute helicopter flight (including landing)
- Informative commentary
- Use of headset
- Transfer to helibase
- Landing fees and permits

Departs: Daily on demand from The Helicopter Line office, Main South Road, Fox or Franz Josef Glacier (weather permitting)

Duration: 30 minutes

PRICE:	1 APR – 30 SEP 11	1 OCT 11 – 31 MAR 12
Adult	\$225	\$232
Child 4-14 years	\$157	\$163

THE HELICOPTER LINE

HLIZQN

Half Day Franz Josef Glacier Experience



The magnificent Franz Josef Glacier is widely regarded as the gem of New Zealand's West Coast glaciers. Experience the most spectacular glacier environment available to the general public anywhere in the world.

This is a fantastic introduction to an enthralling world of ice, traversing spectacular tracks. Longer in duration than others, this walk allows you more time to enjoy the impressive terrain on the lower reaches of Franz Josef Glacier. After a short walk through regenerating rainforest, the trip continues along the glacier valley with the guide calling stops to explain the unique features of the Franz Josef Glacier and its surroundings. After strapping on crampons, make your way up the terminal face of the glacier, where pre-formed tracks make exploring the lower reaches of the glacier achievable for most.

INCLUDES:

- Experienced guide
- Use of leather boots, woollen socks and waterproof clothing
- Use of crampons and alpenstock
- Entry to the public pools at the Glacier Hot Pools

Departs: Daily from Franz Josef Glacier Guides Base at 8:45am, 10:30am, 12:30pm (winter), 8:45am, 10:30am, 12:30pm, 3pm (summer)

Duration: 4 hours 30 minutes

PRICE:	
Adult	\$97
Child 8-16 years	\$79

FRANZ JOSEF GLACIER GUIDES

FJGWHO