

# Fitzroy Crossing and Halls Creek



Windjana Gorge National Park

Straddling the Fitzroy River, Fitzroy Crossing acts as a perfect stopover for those exploring the nearby national parks of the Kimberley. Make it your base to explore Tunnel Creek and Windjana Gorge National Parks. Be sure you head to the river, which is legendary for barramundi fishing.

A journey to Geikie Gorge National Park will reward you with spectacular waterways surrounded by enormous cliffs that hint at ancient times. Millions of years ago, the Fitzroy River carved through the limestone reef creating the impressive gorge. For a true appreciation of the local history and culture, take an indigenous tour and learn all about bush tucker and Aboriginal medicine.

About three hours from Fitzroy Crossing and on the edge of the Great Sandy Desert you'll find Halls Creek. This historic town is rich with the influence of the Western Australian gold mining industry and provides easy access to Purnululu National Park and the Bungle Bungle Range. In this part of the Kimberley there are amazing natural attractions including the phenomenal Wolfe Creek Crater, the second largest meteorite crater in the world, as well as a six metre high wall of quartz rock, known as China Wall.

## Our favourites

Explore Tunnel Creek and Windjana Gorge National Parks

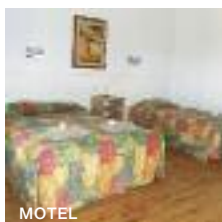
Take a trip to Geikie Gorge

Fish for Barramundi on the Fitzroy River

Visit Wolfe Creek Crater and the China Wall

Swim at Palm Springs, an outback oasis with a fresh water spring

## Fitzroy River Lodge ★★★



MOTEL

Situated on the banks of the mighty Fitzroy River, at the lodge you can relax on 50 acres of natural bush with shady trees and landscaped gardens.

Town Centre 3.5km  
Map page 7 Ref. 11

Lot 277 Great Northern Highway, Fitzroy Crossing

### PROPERTY FEATURES:

- Pool
- Parking (undercover)

### ACCOMMODATION FEATURES:

- Air-conditioning
- Fan
- Tea/coffee making facilities
- In-room movies (free)
- Internet access (broadband)
- Ironing facilities
- All rooms non smoking

Room serviced daily

From **\$149** PER ROOM PER NIGHT\*

1 APR 10 – 31 MAR 11	ADULTS	1 NT	3 NTS	5 NTS
Boab Room/Safari Lodge Motel	1 to 2	149	447	745
Riverview Studio Unit	1 to 2	300	900	1500
2 Bedroom Family Unit	1 to 4	304	912	1520
	1 to 6	388	1164	1940

**Children** 0 to 3 years – cot/bed charge payable direct.  
4 to 12 years – adult prices apply.

**Max capacity** Boab Room/Riverview Studio – 2,  
Safari Lodge/Motel – 3, Unit – 4,  
2 Bedroom Family Unit – 6.

FITFIZ

## Kimberley Hotel, Halls Creek ★★★☆



Set in delightful gardens, the hotel features large rooms, a colonial style lounge, traditional saloon bar and restaurant.

Town Centre 500m  
Map page 7 Ref. 12

Roberta Avenue, Halls Creek

### PROPERTY FEATURES:

- Restaurant ▪ Bars (2)
- Room service (limited)
- Barbecue area ▪ Pool
- Internet café
- Guest laundry
- Parking

### ACCOMMODATION FEATURES:

- Air-conditioning ▪ Fan
- Cable TV ▪ Tea/coffee making facilities
- In-room movies (pay to view)
- Ironing facilities ▪ Hair dryer

Room serviced daily



From **\$180** PER ROOM PER NIGHT\*

1 APR 10 – 31 MAR 11	ADULTS	1 NT	3 NTS	5 NTS
Corporate	1 to 2	180	540	900
Deluxe	1 to 2	220	660	1100
Family	1 to 4	292	876	1460

**Children** 0 to 12 years – free when sharing with an adult and using existing bedding.

**Max capacity** Corporate/Deluxe – 3, Family – 6.

KIMKIM