



Kelvedon Beach

Household names abound along Tasmania's East Coast. St Helens, Bay of Fires, Bicheno, Swansea, Freycinet National Park and Wine Glass Bay – they're all here for your enjoyment, and they're all equally spectacular to visit.

Freycinet National Park is a bird-watcher's paradise. Look skyward for whitebellied sea eagles and yellow-tailed black cockatoos. At the Freycinet Peninsula, see the peaks of the Hazards, crystal clear water and white sand. It's postcard-perfect scenery. Nearby, a Wineglass Bay cruise is a great way to experience this natural wonder, or hike up Mt Amos for a supreme bird's-eye view of this paradise.

St Helens has a reputation for being a holiday town, which means there's plenty to keep you occupied. Cafés, restaurants, boutiques and of course a huge range of accommodation.

Fishing port Bicheno is an angler's dream, and divers reckon it's pretty special too. This pristine underwater environment spurs kelp forests and abundant fish life. Add some great bistros, cafés and taverns to the mix and you've got just the spot for a water-loving holiday.

Swansea is as pretty as its name sounds. In this coastal haven you'll see sandstone buildings built by convicts, some of which now serve as accommodation for visitors.

Seasoned travellers who think they've seen it all quickly change their tune when it comes to the Bay of Fires. Voted by Lonely Planet as the "world's hottest destination" for 2009, this 30km stretch along the northeast coast is just the ticket to the holiday of a lifetime.

Our Favourites

Explore Freycinet National Park

Enjoy a picnic overlooking Wineglass Bay

Visit the convict ruins on Maria Island

Catch fresh fish from the rivers or ocean

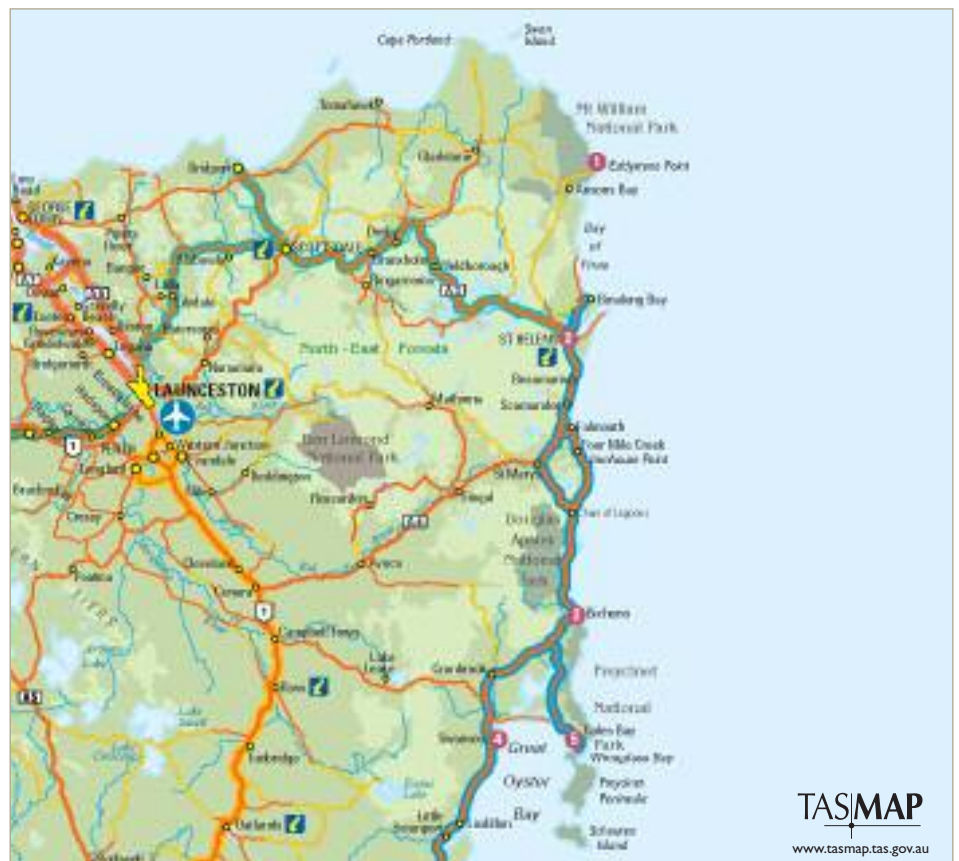
Take a guided four day walk along the stunning beaches of the Bay of Fires



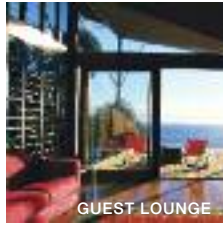
Bay of Fires

FIND YOUR ACCOMMODATION

REF.	APARTMENTS	PAGE
3	Diamond Island Retreat	37
4	Swansea Beach Chalets	38
4	Swansea Cottages	39
REF.	HOTELS	PAGE
1	Bay of Fires Lodge	37
3	Beachfront at Bicheno	38
5	Freycinet Lodge	39
4	Meredith House	38
4	Piermont Retreat	39
5	Saffire Freycinet	40
4	Schouten House	38
2	Tidal Waters Resort	37



Bay of Fires Lodge ◆◆◆◆



Guest Lounge
Near Ansons Bay, Mt William National Park

Set on a hilltop surrounded by National Park, Bay of Fires Lodge is the only building on

Beach 20m
Map page 36 Ref. 1

20km of outstanding coastal wilderness. A truly ecologically-aware structure, the Lodge features shared rain water showers, composting toilets and solar power and maximises the visual connection with the surrounding environment. Together with great food and wine, the relationship with the location's unspoiled beauty creates a magical experience for you to enjoy.

PROPERTY FEATURES:

- Guest lounge ■ Library
- Sun deck ■ Non smoking

Room not serviced



From \$900 PER ROOM PER NIGHT*

7 MAY – 12 SEP 10	ADULTS	1 NT	3 NTS	5 NTS
Lodge	2	900	2700	4500

Sole use prices also available. Bay of Fires Lodge is also available to guests on the 4 Day Bay of Fires walk on page 53.

Includes	All meals, non-alcoholic beverages and selected Tasmanian wines daily. National Park pass.
----------	--

Children 0 to 11 years – not catered for.
Max capacity 2.

BFLTES

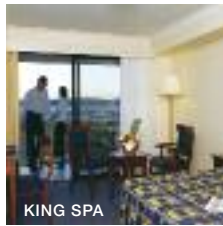
HOW TO GET THERE:

Return transfers are available from Launceston.

ONE WAY PRICE:	
4WD up to 4 adults	\$375
Bus up to 17 adults	\$450

Self drive option to nearby Ansons Bay also available.

Tidal Waters Resort, St Helens ★★★★★



King Spa

Surrounded by scenic gardens and boasting a perfect waterfront setting. Just 15 minutes drive from the Bay of Fires and beautiful Binalong Bay.

Town Centre 500m
Map page 36 Ref. 2

1 Quail Street, St Helens

PROPERTY FEATURES:

- Restaurants (2)
- Room service (limited) ■ Pool
- Guest laundry ■ Parking
- Non smoking

ACCOMMODATION FEATURES:

- Air-conditioning ■ Mini bar
- Tea/coffee making facilities
- Spa bath (King Spa)
- CD/DVD player ■ Ironing facilities
- Internet access (wireless) ■ Hair dryer
- Bathrobes (King Spa)

Room serviced daily



From \$165 PER ROOM PER NIGHT*

1 NOV – 25 DEC 09, 1 OCT – 20 DEC 10	ADULTS	1 NT	3 NTS	5 NTS
Standard	1 to 2	180	540	900
King Spa	1 to 2	220	660	1100

26 DEC 09 – 30 APR 10	ADULTS	1 NT	3 NTS	5 NTS
Standard	1 to 2	220	660	1100
King Spa	1 to 2	270	810	1350

1 MAY – 30 SEP 10	ADULTS	1 NT	3 NTS	5 NTS
Standard	1 to 2	165	495	825
King Spa	1 to 2	205	615	1025

21 DEC 10 – 31 MAR 11	ADULTS	1 NT	3 NTS	5 NTS
Standard	1 to 2	230	690	1150
King Spa	1 to 2	280	840	1400

Children 0 to 2 years – cot free of charge. 3 to 14 years – adult prices apply.

Max capacity Standard – 4, King Spa – 2.

TIDTES

Diamond Island Retreat, Bicheno ★★★★★



69 Tasman Highway, Bicheno

Imagine being so close to the coast as to feel a part of it and strolling through a beautiful garden, at the foot of which lives a colony of little penguins and a few steps further a private beach, complete with a magical island.

These contemporary apartments offer uninterrupted views of the coast, with the wonders of two national parks close by.

PROPERTY FEATURES:

- Restaurant ■ Bar
- Room service (limited)
- Pool ■ Barbecue area
- Tennis court ■ Parking

ACCOMMODATION FEATURES:

- Heating
- Kitchen with microwave
- In-room movies (pay to view)
- Cable TV
- Hair dryer

Apartment serviced every 3 days

Town Centre 2.5km
Map page 36 Ref. 3



From \$200 PER ROOM PER NIGHT*

1 NOV 09 – 31 AUG 10	ADULTS	1 NT	2 NTS	5 NTS
1 Bedroom	1 to 2	200	400	1000
2 Bedroom	4	260	520	1300

1 SEP 10 – 31 MAR 11	ADULTS	1 NT	2 NTS	5 NTS
1 Bedroom	1 to 2	220	440	1100
2 Bedroom	4	290	580	1450

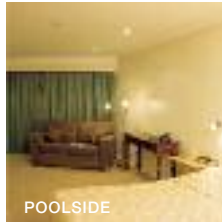
2 night minimum stay applies 20 Dec 09 – 1 Feb, 2 – 6 Apr and 20 Dec 10 – 1 Jan 11. 1 Bedroom Executive prices also available.

Children 0 to 2 years – cot free of charge. 3 to 14 years – adult prices apply.

Max capacity 1 Bedroom – 3, 2 Bedroom – 5.

DIATES

Beachfront at Bicheno ★★★☆



POOLSIDE

Beachfront at Bicheno has breathtaking views of Waubes Bay and is close to Bicheno township, beaches, diving and penguin tours.

Beach 500m
Town Centre 500m
Map page 36 Ref. 3

232 Tasman Highway, Bicheno

PROPERTY FEATURES:

- Restaurants (2)
- Room service (limited)
- Tavern
- Gaming facilities
- Pool (heated)
- Children's playground
- Barbecue
- Guest laundry

ACCOMMODATION FEATURES:

- Heating
- Tea/coffee making facilities
- Cable TV
- Electric blankets

Room serviced daily

From **\$135** PER ROOM PER NIGHT*

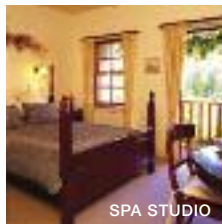
1 NOV 09 – 31 MAR 11	ADULTS	1 NT	3 NTS	5 NTS
Courtyard	1 to 2	135	405	675
Poolside	1 to 2	140	420	700
Seaview	1 to 2	160	480	800

Children 0 to 5 years – cot free of charge.
6 to 12 years – \$20 per child per night.

Max capacity Courtyard – 2 adults/1 child,
Poolside – 2 adults/2 children, Seaview 2.

BWBTES

Meredith House, Swansea ◆◆◆◆



SPA STUDIO

Situated on a hill in the centre of the seaside town of Swansea, overlooking Freycinet Peninsula and Great Oyster Bay.

Beach 200m
Town Centre 200m
Map page 36 Ref. 4

15 Noyes Street, Swansea

PROPERTY FEATURES:

- Barbecue area
- Golf course (9 holes)
- Guest lounge
- Internet facilities
- DVD library
- Library
- Fireplace
- Guest laundry
- Parking

ACCOMMODATION FEATURES:

- Fan
- Heating
- Ironing facilities
- Tea/coffee making facilities
- Mini bar
- Internet access (wireless)
- Cable TV
- Spa bath (Spa Studios)
- Limited cooking facilities with microwave (Spa Studios)

Room serviced daily



From **\$170** PER ROOM PER NIGHT*

1 NOV – 21 DEC 09, 16 JAN – 31 MAR 10, 7 APR – 21 DEC 10, 16 JAN – 31 MAR 11	ADULTS	1 NT	3 NTS	5 NTS
Twin Room	2	170	510	850
Queen Room	2	180	540	900
Standard Studio	2	180	540	900
Spa Studio	2	200	600	1000

22 DEC 09 – 15 JAN 10, 1 – 6 APR, 22 DEC 10 – 15 JAN 11	ADULTS	2 NTS	3 NTS	5 NTS
Twin Room	2	360	540	900
Queen Room	2	380	570	950
Standard Studio	2	400	600	1000
Spa Studio	2	440	660	1100

Includes Port and sherry in room on arrival.
Full breakfast daily.

Children 0 to 3 years – cot free of charge.
4 to 16 years – \$20 per child per night.

Max capacity Twin Room/Standard Studio/Spa Studio – 3,
Queen Room 2.

MERTES

Schouten House, Swansea ◆◆◆◆



A landmark Heritage Listed property c1844. Indulge in culinary treats and soak up the history of this grand Georgian home.

Beach 60m
Town Centre 1km
Map page 36 Ref. 4

1 Waterloo Road, Swansea

PROPERTY FEATURES:

- Room service (limited)
- Guest lounge
- Fireplace
- Laundry service
- Parking

ACCOMMODATION FEATURES:

- Fan
- Heating
- Electric blankets
- Tea/coffee making facilities
- Mini bar
- Ironing facilities
- Hair dryer
- All rooms non smoking

Room serviced on request (extra charge)

From **\$160** PER ROOM PER NIGHT*

1 – 30 NOV 09, 16 APR – 30 NOV 10	ADULTS	1 NT	3 NTS	5 NTS
Antique Queen Room	2	160	480	800
Four Poster Room	2	160	480	800
Family Room	2	160	480	800

1 DEC 09 – 15 APR 10, 1 DEC 10 – 31 MAR 11	ADULTS	1 NT	3 NTS	5 NTS
Antique Queen Room	2	180	540	900
Four Poster Room	2	180	540	900
Family Room	2	190	570	950

2 night minimum stay applies 24 Dec 09 – 31 Jan 10, 2 – 5 Apr, 24 Dec 10 – 31 Jan 11.

Includes Full breakfast daily.

Children 0 to 2 years – cot/bed charge payable direct.
3 to 14 years – adult prices apply.

Max capacity Antique Queen Room/Four Poster Room – 2,
Family Room – 3.

SCHSWZ

Swansea Beach Chalets ★★★☆



Located in the historic township of Swansea, enjoy spectacular views of Freycinet National Park over Great Oyster Bay.

Beachfront
Town Centre 500m
Map page 36 Ref. 4

Shaw Street, Swansea

PROPERTY FEATURES:

- Pool
- Barbecue area
- Games room
- Children's playground
- Guest laundry
- Non smoking
- Parking

ACCOMMODATION FEATURES:

- Deck (ocean view)
- Fan
- Limited cooking facilities
- Video player
- CD/DVD player
- Spa bath (some 2 Bedrooms)
- Ironing facilities
- Hair dryer

Room serviced daily

From **\$160** PER ROOM PER NIGHT*

1 NOV 09 – 30 APR, 1 SEP 10 – 31 MAR 11	ADULTS	1 NT	3 NTS	5 NTS
Studio Chalet	1 to 2	180	540	900
2 Bedroom Chalet	1 to 4	220	660	1100

1 MAY – 31 AUG 10	ADULTS	1 NT	3 NTS	5 NTS
Studio Chalet	1 to 2	160	480	800
2 Bedroom Chalet	1 to 4	200	600	1000

2 night minimum stay applies 25 Dec 09 – 26 Jan, 2 – 5 Apr, 25 Dec 10 – 26 Jan 11. 2 Bedroom Water View Chalet prices also available.

Children 0 to 2 years – cot free of charge.
3 to 14 years – \$10 per child per night.

Max capacity Studio Chalet – 2, 2 Bedroom Chalet – 4.

SBCSWZ

Swansea Cottages ◆◆◆◆



Swansea Cottages offers a choice of suite or cottage style accommodation adjacent to Great Oyster Bay and the beach.

Beach 50m
Town Centre 250m
Map page 36 Ref. 4

43 Franklin Street, Swansea

PROPERTY FEATURES:

- Barbecue area
- Guest laundry
- Parking

ACCOMMODATION FEATURES:

- Air-conditioning
- Tea/coffee making facilities
- Balcony (Cottages)
- Kitchen (Cottages)
- Limited cooking facilities (Suites)
- CD/DVD player
- Washer/dryer (Cottages)
- Ironing facilities

Suites serviced daily
Cottages serviced weekly

From \$160 PER ROOM PER NIGHT*

1 NOV – 23 DEC 09, 11 JAN – 1 APR, 5 – 30 APR, 31 AUG – 23 DEC 10, 11 JAN – 31 MAR 11	ADULTS	1 NT	2 NTS	3 NTS
Double Suite	1 to 2	200	380	540
Family Suite	1 to 3	240	440	630
2 Bedroom Cottage	1 to 2	240	440	660
3 Bedroom Spa Cottage	1 to 2	270	500	750

1 MAY – 30 AUG 10	ADULTS	1 NT	2 NTS	3 NTS
Double Suite	1 to 2	180	340	480
Family Suite	1 to 3	220	400	570
2 Bedroom Cottage	1 to 2	200	360	540
3 Bedroom Spa Cottage	1 to 2	230	420	600

Other prices apply 24 Dec 09 – 10 Jan 10, 24 Dec 10 – 10 Jan 11. Spa Suite prices also available.

Children 0 to 2 years – cot/bed charge payable direct. 3 to 14 years – adult prices apply.

Max capacity Double Suite – 2, Family Suite – 4, 2 Bedroom Cottage – 6, 3 Bedroom Spa Cottage – 7.

SWCTES

Piermont Retreat, Swansea ◆◆◆◆



Located on 93 hectares of serene beach frontage on Great Oyster Bay overlooking Freycinet National Park.

Beachfront
Town Centre 2km
Map page 36 Ref. 4

12990 Tasman Highway, Swansea

PROPERTY FEATURES:

- Barbecue area
- Bicycle hire
- Guest laundry
- Internet access (wireless)
- Restaurant
- Tennis court
- Pool

ACCOMMODATION FEATURES:

- Limited cooking facilities
- CD/DVD player
- Spa bath
- Ironing facilities
- Fireplace
- Washer/dryer
- Hair dryer
- All rooms non smoking

Room serviced daily

From \$225 PER ROOM PER NIGHT*

11 DEC 09 – 30 APR 10	ADULTS	1 NT	3 NTS	5 NTS
Studio Spa	1 to 2	255	765	1275
Beachfront Spa	1 to 2	285	855	1425

1 OCT – 10 DEC, 1 MAY – 31 AUG 10	ADULTS	1 NT	3 NTS	5 NTS
Studio Spa	1 to 2	225	675	1125
Beachfront Spa	1 to 2	255	765	1275

1 SEP – 7 DEC 10	ADULTS	1 NT	3 NTS	5 NTS
Studio Spa	1 to 2	235	705	1175
Beachfront Spa	1 to 2	265	795	1325

8 DEC 10 – 31 MAR 11	ADULTS	1 NT	3 NTS	5 NTS
Studio Spa	1 to 2	265	795	1325
Beachfront Spa	1 to 2	295	885	1475

3 night minimum stay applies 1 – 4 Apr, 11 – 13 Jun, 24 Dec 10 – 9 Jan 11. 2 night minimum stay applies 10 – 31 Jan 11. Other room types also available.

Children 0 to 2 years – cot free of charge. 3 to 14 years – adult prices apply.

Max capacity 2.

PIETES

Freycinet Lodge, Freycinet National Park ★★☆☆



Freycinet National Park, Coles Bay

Uniquely set within Freycinet National Park at the foot of the Hazards, Freycinet Lodge is a superb base for exploring the world famous Wineglass Bay and the Freycinet Peninsula.

The environmentally friendly one and two-roomed cabins are sensitively sited in coastal bushland on the shores of Great Oyster Bay. Freycinet Lodge is home to the signature Wineglass to Wine Glass experience.

PROPERTY FEATURES:

- Restaurants (2)
- Bar
- Guest lounge
- Library
- Gift shop
- Tennis court
- Barbecue area
- Safety deposit box
- Guest laundry
- Internet facilities
- Bicycle hire (extra charge)
- Parking

ACCOMMODATION FEATURES:

- Heating
- Refrigerator
- Fan
- Tea/coffee making facilities
- Hair dryer

Room serviced daily

Coles Bay 2.6km
Map page 36 Ref. 5



From \$236 PER ROOM PER NIGHT*

1 NOV 09 – 30 APR 10	ADULTS	2 NTS	5 NTS	7 NTS
Freycinet Cabin	1 to 2	648	1620	2268
Oyster Bay Cabin	1 to 2	744	1860	2604

1 MAY – 30 SEP 10	ADULTS	1 NT	3 NTS	5 NTS
Freycinet Cabin	1 to 2	236	708	1180
Oyster Bay Cabin	1 to 2	267	801	1335

1 OCT 10 – 31 MAR 11	ADULTS	2 NTS	5 NTS	7 NTS
Freycinet Cabin	1 to 2	672	1680	2352
Oyster Bay Cabin	1 to 2	766	1915	2681

1 night stay available 1 Nov – 19 Dec 09, 1 Oct – 19 Dec 10. Wineglass Deluxe and Wineglass Premier Cabin prices also available.

Includes Full breakfast daily.

Children 0 to 4 years – cot free of charge. 5 to 14 years – adult prices apply.

Max capacity Freycinet Cabin – 3, Oyster Bay Cabin – 5.

FRETES

WINEGLASS TO WINE GLASS EXPERIENCE

Take an invigorating walk up to Wineglass Bay lookout and then descend onto Wineglass Bay. From Wineglass Bay you take the track along to Hazards Beach for lunch. After an afternoon of relaxing, a water taxi will collect you for a 30 minute scenic cruise back to Freycinet Lodge.

INCLUDES:

- Morning tea and lunch
- Guided walk to Wineglass Bay and Hazards Beach
- One way boat transfer to the lodge

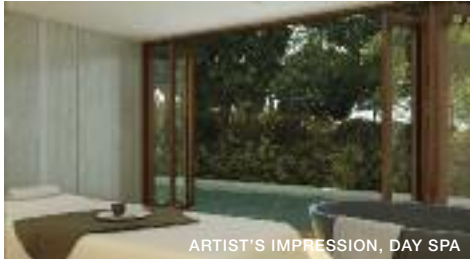
Departs: Wed to Sun at 8am (Nov – May)
Returns: 4pm

PRICE PER PERSON	1 NOV 09 – 31 MAY 10	1 NOV 10 – 31 MAR 11
Adult	\$365	\$380
Child prices on application.		

Saffire Freycinet, Coles Bay ◆◆◆◆◆



ARTIST'S IMPRESSION



ARTIST'S IMPRESSION, DAY SPA



ARTIST'S IMPRESSION

Saffire is an inspirational coastal sanctuary that delivers sophisticated luxury built at the entrance to Coles Bay, overlooking the Hazards and the crystal clear waters of Great Oyster Bay.

Discreetly positioned within the serene and pristine Freycinet Peninsula, Saffire is the jewel of Tasmania, connecting mankind and Mother Nature with breathtaking style.

Only two hours from Hobart, Saffire Freycinet is unique, indulgent and enriching. Designed for a select few, a maximum of just 40 guests are accommodated in 20 luxurious suites with magnificent ocean views. Included in the main building is the restaurant, outdoor courtyard, day spa with steam and massage room and meeting facilities. This new east coast experience is a celebration of the art of service, wellbeing, masterful culinary delights, ancient landscape and wildlife in abundance.

Individual daily itineraries can lead to remote island adventures and the famed Wineglass Bay, enjoy hiking, sport fishing, wild harvest foraging, bird watching, quad biking. Indulge with an afternoon of pampering at the health and day spa followed by a glass of pinot on a private suite deck against a spectacular backdrop of the Hazards mountains and a wilderness of stars.

PROPERTY FEATURES:

- Day spa ▪ Restaurant ▪ Bar ▪ Guest lounge ▪ Library
- Room service (24 hour) ▪ Gymnasium
- 20 individual suites each with private courtyard

ACCOMMODATION FEATURES:

- Deck ▪ CD/DVD player
- Espresso machine (Premium Suites)
- Plunge pool (Premium Suites)

Room serviced daily

Coles Bay 2km

Map page 36 Ref. 5



ARTIST'S IMPRESSION

4 APR 10 – 31 MAR 11	ADULTS	1 NT	2 NTS	3 NTS
Deluxe Suite	1 to 2	1550	3100	4650
Luxury Suite	1 to 2	1700	3400	5100
Premium Suite	1 to 2	2550	5100	7650

Includes	All meals and selected beverages daily. Complimentary mini bar. One 30 minute spa treatment per person in Deluxe Suite or Luxury Suite. One 60 minute spa treatment per person in Premium Suite. Selected activities daily.
----------	---

Children 0 to 17 years – not catered for.

Max capacity 2.

SAFTES

Full Day Wineglass Bay Cruise



Escape to Wineglass Bay and the Freycinet Peninsula on this fully guided Eco Certified cruise. Join Rastus the dolphin dog as you explore Sea Caves and dramatic pink granite cliffs so close you can almost touch. In Wineglass Bay indulge in a freshly shucked oyster, still dripping from the sea and served with a sample of Tasmania's finest sparkling wine and cheese.

INCLUDES:

- Expert guide and commentary
- Tasmanian sparkling wine, oysters and cheese
- Binoculars
- Wet weather gear

Departs: Daily from Coles Bay at 9am and 10am (Sep – May)

Returns: 1pm and 2pm



PRICE:

Adult	\$130
Child 4-14 years	\$85

FREYCINET SEA CRUISES

FSCTES

The Freycinet Paddle



This half day guided sea kayaking tour is the ultimate way to discover the breathtaking coastline of the Freycinet Peninsula. Choose from a morning or twilight tour.

INCLUDES:

- 2 hours paddle time
- Experienced guides
- All sea kayaking equipment
- Spray jacket
- Morning and afternoon tea
- Dry bag for personal items

Departs: Daily from Coles Bay at 8:30am and twilight

Duration: 3 hours



PRICE:

Adult	\$95
Child 4-14 years	\$95

FREYCINET ADVENTURES

FSATAS

Freycinet in a Day



This full day experience combines the very best that Freycinet has to offer in a relaxed day of adventure. Spend the morning exploring the breathtaking coastline of Freycinet National Park by sea kayak. In the afternoon embark on a self-guided walk from Hazards Beach to the world famous Wineglass Bay.

INCLUDES:

- Freycinet Paddle morning tour
- Aqua Taxi transfers to Hazards Beach
- Lunch voucher for use at the local store
- Morning tea

Departs: Daily from Coles Bay at 8:30am (Oct – Apr)

Returns: 4pm



PRICE:

Adult	\$180
Child 4-14 years	\$180

FREYCINET ADVENTURES

FSATAS