



The Nut, Stanley

Our Favourites

Sample Smithton's delicious dairy produce and oysters

Visit the tulip farm at Table Cape

Check out the Maritime Museum in Devonport

Explore historic Stanley and visit The Nut

Ride the 110 metre Tarkine slide to the bottom of the forest floor

It's another world along the north west coast, and one worth a visit. There's a kind of tranquillity here that's unique to the region; arts and craft artisans really shine, and the red earth produces wonderful things to eat and drink.

From handcrafted paper, fine furniture and jewellery to lovingly made cheese and freshly picked raspberries, the north west coast is a treasure trail of wonderful things.

Rich farmland is as beautiful as it is bountiful, so take your time to travel along Bass Strait from Devonport to Penguin, Burnie and Wynyard, through to coastal Stanley and Marrawah.

Stanley presents a challenge for visitors and it's called The Nut. This sheer sided bluff is the remains of an ancient volcanic plug, and it's regarded by many as a giant plaything that's just begging to be climbed. For a more serene experience, take the chairlift, or walk the track to the summit where you'll see views across Bass Strait beaches and the town.

Inland is Deloraine, and just like Stanley, it's home to some truly inspirational craftspeople. You'll find them in their studios painting and making jewellery. Call in for a chat, they'd love to meet you.

See millions of years of magic in the Tarkine. Northern access to the Tarkine and its magnificent sinkhole is via Tarkine Forest Adventures. Four pathways are offered through this area, bringing you close to the sinkhole and its mysteries. There's also a 110 metre Tarkine Slide that delivers you to the forest floor in spectacular fashion!



FIND YOUR ACCOMMODATION

| REF. | APARTMENTS | PAGE |
|------|---------------------------|------|
| 3 | Abbey's Cottages | 49 |
| 3 | Horizon Deluxe Apartments | 49 |
| 4 | Rosebank Cottage | 49 |
| REF. | HOTELS | PAGE |
| 1 | Edgewater | 48 |
| 1 | Quality Hotel Gateway | 48 |
| 3 | Stanley Seaview Inn | 49 |
| 4 | Tall Timbers | 50 |
| 2 | The Waterfront Wynyard | 48 |



North West Coast

Quality Hotel Gateway, Devonport ★★★☆



16 Fenton Street, Devonport

Quality Hotel Gateway offers accommodation right in the heart of this beautiful Tasmanian city of Devonport. The property is the gateway to the 'Cradle Region' and is an ideal base for those looking for an activity holiday.

The guest rooms at the Quality Hotel Gateway are spacious, clean and comfortable with every modern convenience fitted and friendly, professional staff will do everything to ensure your stay is as memorable as possible.

Montego's restaurant is a great place to meet with friends and enjoy a sumptuous array of local cuisine prepared using the freshest of local produce. Cafe Fenton is a very casual and relaxed environment for light meals and evening night caps.

PROPERTY FEATURES:

- 24 hour reception
- Restaurant
- Bar
- Room service (limited)
- Parking

ACCOMMODATION FEATURES:

- Air-conditioning (Spa Deluxes)
- Tea/coffee making facilities
- Internet access (wireless)
- Ironing facilities
- In-room movies (free)
- Spa (Spa Deluxes)
- Hair dryer

Room serviced daily

Town Centre 100m
Map page 47 Ref. 1



SPA DELUXE

From **\$127** PER ROOM PER NIGHT*



| 1 NOV 09 – 31 MAR 10 | ADULTS | 1 NT | 3 NTS | 5 NTS |
|----------------------|--------|------|-------|-------|
| Standard | 1 to 2 | 136 | 408 | 680 |
| Spa Deluxe | 1 to 2 | 203 | 609 | 1015 |
| 1 APR 10 – 31 MAR 11 | ADULTS | 1 NT | 2 NTS | 5 NTS |
| Standard | 1 to 2 | 136 | 253 | 635 |
| Spa Deluxe | 1 to 2 | 213 | 400 | 1000 |

Includes Standard room includes light breakfast for 2 adults daily.

Children 0 to 12 years – free when sharing with an adult and using existing bedding, room only.

Max capacity Standard/Spa Deluxe – 2. **QGHDP0**

GATEWAY SELF DRIVE PACKAGE

INCLUDES:

- 2 nights accommodation
- Full buffet breakfast on one morning
- Breakfast at Anvers Chocolate Factory on one morning
- Entry to Devils@Cradle ▪ Entry to Hellyers Road Distillery

| PRICE PER PERSON | ADULTS | 2 NTS | EXTRA NTS |
|----------------------|--------|-------|-----------|
| 1 NOV 09 – 31 MAR 10 | | | |
| Standard | 2 | 197 | 68 |
| Spa Deluxe | 2 | 263 | 102 |
| 1 APR 10 – 31 MAR 11 | | | |
| Standard | 2 | 197 | 68 |
| Spa Deluxe | 2 | 274 | 107 |

Child prices on application.

Edgewater, Devonport ★★★☆



4 Thomas Street, Devonport

PROPERTY FEATURES:

- Restaurant ▪ Bar
- Guest laundry
- Gaming facilities
- Parking

ACCOMMODATION FEATURES:

- Air-conditioning
- Mini bar (except Courtyard)
- Hair dryer (except Courtyard)
- Internet access (except Courtyard)
- Tea/coffee making facilities
- Cable TV

Room serviced daily



Situated on the banks of the Mersey River and ideally located right next to the Spirit of Tasmania terminal and offers great value accommodation.

Town Centre 3km
Map page 47 Ref. 1

From **\$90** PER ROOM PER NIGHT*

| 16 DEC 09 – 30 APR 10 | ADULTS | 1 NT | 3 NTS | 5 NTS |
|--------------------------------------|--------|------|-------|-------|
| Courtyard | 1 to 2 | 110 | 330 | 550 |
| Waterfront | 1 to 2 | 145 | 435 | 725 |
| Terrace | 1 to 2 | 180 | 540 | 900 |
| 1 NOV – 15 DEC 09, 1 MAY – 30 SEP 10 | ADULTS | 1 NT | 3 NTS | 5 NTS |
| Courtyard | 1 to 2 | 90 | 270 | 450 |
| Waterfront | 1 to 2 | 120 | 360 | 600 |
| Terrace | 1 to 2 | 155 | 465 | 775 |
| 1 OCT 10 – 31 MAR 11 | ADULTS | 1 NT | 3 NTS | 5 NTS |
| Courtyard | 1 to 2 | 110 | 330 | 550 |
| Waterfront | 1 to 2 | 125 | 375 | 625 |
| Terrace | 1 to 2 | 160 | 480 | 800 |

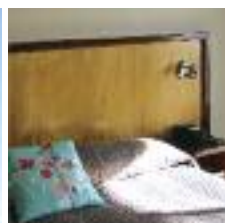
Terrace Spa and Executive Spa prices also available.

Children 0 to 2 years – cot free of charge.
3 to 14 years – adult prices apply.

Max capacity Courtyard/Terrace – 2, Waterfront – 3.

EDGDP0

The Waterfront Wynyard ★★★☆



1 Goldie Street, Wynyard

PROPERTY FEATURES:

- Restaurant ▪ Bar
- Room service ▪ Barbecue
- Guest lounge ▪ Fireplace
- Bicycle/kayak hire ▪ DVD library
- Internet facilities ▪ Guest laundry
- Parking ▪ Non smoking

ACCOMMODATION FEATURES:

- Ocean views ▪ Fan ▪ Cable TV
- Electric blankets (except King Room)
- Tea/coffee making facilities
- Microwave ▪ Mini bar ▪ Hair dryer
- Internet access (broadband)
- Sony playstation ▪ Ironing facilities

Room serviced daily

Offering absolute riverfront accommodation nestled on the banks of the Inglis River, with spectacular views to the golf course, the wharf or out to open sea.

Town Centre 1km
Map page 47 Ref. 2

From **\$125** PER ROOM PER NIGHT*

| 1 NOV 09 – 31 MAR 10 | ADULTS | 1 NT | 3 NTS | 5 NTS |
|----------------------|--------|------|-------|-------|
| Standard | 2 | 125 | 375 | 625 |
| Deluxe | 2 | 135 | 405 | 675 |
| 1 APR 10 – 31 MAR 11 | ADULTS | 1 NT | 3 NTS | 5 NTS |
| Standard | 2 | 135 | 405 | 675 |
| Deluxe | 2 | 150 | 450 | 750 |

Sole use prices also available.

Children 0 to 5 years – free when sharing with an adult and using existing bedding.
6 to 12 years – \$20 per child per night.

Max capacity Standard – 3, Deluxe – 2.

WATTAS

Stanley Seaview Inn ★★★☆



With views over Stanley, surrounding beaches and Rocky Cape National Park, this is the perfect base to explore the North West.

Town Centre 1km
Beach 1km
Map page 47 Ref. 3

58 Dovecote Road, Stanley

PROPERTY FEATURES:

- Bar ▪ Restaurant (open Sep to May)
- Room service (limited)
- Children's playground
- Internet access (wireless)
- Guest laundry
- Non smoking
- Parking

ACCOMMODATION FEATURES:

- Tea/coffee making facilities
- Mini bar ▪ Refrigerator
- Ironing facilities
- Hair dryer

Room serviced daily

From **\$120** PER ROOM PER NIGHT*

| 1 NOV 09 – 30 SEP 10 | ADULTS | 1 NT | 3 NTS | 5 NTS |
|----------------------|--------|------|-------|-------|
| Standard | 1 to 2 | 120 | 360 | 600 |
| Seaview | 1 to 2 | 145 | 435 | 725 |
| Seaview Studio | 1 to 2 | 160 | 480 | 800 |
| Seaview 2 Bedroom | 1 to 2 | 170 | 510 | 850 |
| 1 OCT 10 – 31 MAR 11 | ADULTS | 1 NT | 3 NTS | 5 NTS |
| Standard | 1 to 2 | 125 | 375 | 625 |
| Seaview | 1 to 2 | 150 | 450 | 750 |
| Seaview Studio | 1 to 2 | 165 | 495 | 825 |
| Seaview 2 Bedroom | 1 to 2 | 175 | 525 | 875 |

Children 0 to 2 years – cot/bed charge payable direct.
3 to 14 years – adult prices apply.

Max capacity Standard/Seaview – 3, Seaview Studio – 2,
Seaview 2 Bedroom – 4.

SSITAS

Abbey's Cottages, Stanley ★★★



Warm and welcoming cottages and apartments set in the heart of historic Stanley offering sweeping sea views.

Town Centre 10m
Beach 500m
Map page 47 Ref. 3

Reception: 19-21 Church St, Stanley
Cottages: Alexander Tce and Marshall St

PROPERTY FEATURES:

- Charge back facility at the Stanley Hotel
- Sea views ▪ Laundry ▪ Parking

ACCOMMODATION FEATURES:

- Heating
- Spa
- Tea/coffee making facilities
- Kitchen with microwave
- CD/DVD player
- Washer/dryer
- Ironing facilities ▪ Hair dryer
- All rooms non smoking

Room serviced weekly

From **\$170** PER ROOM PER NIGHT*

| 1 NOV 09 – 31 MAR 11 | ADULTS | 1 NT | 2 NTS | 5 NTS |
|-------------------------|--------|------|-------|-------|
| Abbey's The Bakery | 1 to 2 | 170 | 340 | 850 |
| Abbey's on Church | 1 to 2 | 180 | 360 | 900 |
| Abbey's on the Terrace | 1 to 2 | 220 | 440 | 1100 |
| Abbey's The Green House | 1 to 2 | 220 | 440 | 1100 |
| Abbey's Spa Cottage | 1 to 2 | 220 | 440 | 1100 |
| Abbey's Cottage | 1 to 2 | 220 | 440 | 1100 |

2 night minimum stay applies 25 Dec 09 – 31 Jan 10, 1 – 6 Apr, 25 Dec 10 – 31 Jan 11.

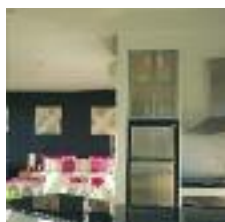
Includes Light breakfast provisions daily.
Complimentary port for adults.

Children 0 to 2 years – cot free of charge.
3 to 14 years – adult prices apply.

Max capacity Abbey's The Bakery/Abbey's on Church – 2,
Abbey's on the Terrace – 4,
Abbey's The Green House/Abbey's Spa Cottage/
Abbey's Cottage – 6.

ABBTAS

Horizon Deluxe Apartments, Stanley ◆◆◆◆



Enjoy panoramic views over Stanley and The Nut from contemporary studio style apartments.

Town Centre 1km
Beach 1km
Map page 47 Ref. 3

88 Dovecote Road, Stanley

PROPERTY FEATURES:

- Barbecue area ▪ Internet facilities
- Guest laundry ▪ Parking

ACCOMMODATION FEATURES:

- Air-conditioning ▪ Ocean views
- Balcony ▪ Mini bar ▪ CD/DVD player
- Barbecue ▪ Internet access
- Kitchen with microwave and dishwasher
- Spa ▪ Washer/dryer ▪ Cable TV
- Ironing facilities ▪ Bathrobes
- Hair dryer ▪ All rooms non smoking

Room serviced daily



From **\$320** PER ROOM PER NIGHT*

| 1 NOV 09 – 31 MAR 10, 1 OCT 10 – 31 MAR 11 | ADULTS | 1 NT | 3 NTS | 5 NTS |
|---|--------|------|-------|-------|
| Luxury Studio | 1 to 2 | 330 | 990 | 1650 |
| 1 APR – 30 SEP 10 | ADULTS | 1 NT | 3 NTS | 5 NTS |
| Luxury Studio | 1 to 2 | 320 | 960 | 1600 |

Children 0 to 15 years – not catered for.

Max capacity 2.

HORTAS

Rosebank Cottage, Smithton ◆◆◆◆



Ideally situated between Smithton and Stanley, Rosebank Cottage boasts a tranquil garden setting.

Town Centre 7km
Beach 5km
Map page 47 Ref. 4

46 Brooks Road, Smithton

PROPERTY FEATURES:

- Barbecue area
- Fireplace
- Internet access (wireless)
- Parking

ACCOMMODATION FEATURES:

- Fireplace
- Kitchen with microwave
- Tea/coffee making facilities
- Laundry facilities
- CD/DVD player
- Hair dryer

Room serviced weekly

From **\$170** PER ROOM PER NIGHT*

| 1 NOV 09 – 31 MAR 11 | ADULTS | 1 NT | 3 NTS | 5 NTS |
|----------------------|--------|------|-------|-------|
| 2 Bedroom Cottage | 1 to 2 | 170 | 510 | 850 |
| Studio Spa | 1 to 2 | 180 | 540 | 900 |

Includes Light breakfast provisions daily.

Children 0 to 1 years – cot free of charge.
2 to 14 years – adult prices apply.

Max capacity 2 Bedroom Cottage – 5, Studio Spa – 2.

RCCTAS

North West Coast

Tall Timbers, Smithton ★★★★★



Scotchtown Road, Smithton
Well appointed motel rooms and apartments set within a beautiful country setting providing peace and tranquillity.

PROPERTY FEATURES:

- Restaurants (2)
- Bars (2)
- Room service (limited)
- Gaming room
- Barbecue area
- Pool (heated indoor)
- Spa
- Tennis courts (2)
- Gymnasium
- Guest laundry
- Parking

ACCOMMODATION FEATURES:

- Heating
- Tea/coffee making facilities
- Mini bar
- In-room movies (free)
- Kitchen with microwave (Apartments)
- Hair dryer
- Ironing facilities

Room serviced daily

Town Centre 1.7km
Map page 47 Ref. 4



From \$170 PER ROOM PER NIGHT*



| 1 NOV 09 – 30 APR, 1 OCT 10 – 31 MAR 11 | ADULTS | 1 NT | 3 NTS | 5 NTS |
|---|--------|------|-------|-------|
| Room with ensuite | 1 to 2 | 180 | 540 | 900 |
| 1 Bedroom | 1 to 2 | 200 | 600 | 1000 |
| 1 MAY – 30 SEP 10 | ADULTS | 1 NT | 3 NTS | 5 NTS |
| Room with ensuite | 1 to 2 | 170 | 510 | 850 |
| 1 Bedroom | 1 to 2 | 190 | 570 | 950 |

2 Bedroom prices also available.

Children 0 to 2 years – cot free of charge.
3 to 14 years – \$15 per child per night.

Max capacity Room with ensuite – 3, 1 Bedroom – 2.

TALTAS

A R Reflections River Cruise



Discover the densely forested Arthur River on this 3 hour eco-cruise. Your journey takes you firstly to the river mouth and nearby Arthur River settlement, then 15km upstream past the Arthur/Frankland river junction before returning to Warra Landing for lunch. After lunch the rainforest walk to Warra Waterfalls is breathtaking.

INCLUDES:

- Scenic cruise
- Lunch with complimentary wine
- Coffee and tea before departure
- Expert guide and commentary

Departs: Daily from Arthur River Jetty at 10:15am (Sep – May)

Returns: 4:15pm

| PRICE: | 1 NOV 09 – 31 MAY 10 | 1 SEP 10 – 31 MAR 11 |
|--------------------------------|----------------------|----------------------|
| Adult | \$85 | \$88 |
| Child 6-15 years | \$44 | \$48 |
| Family 2 adults and 2 children | \$240 | \$250 |

Not suitable for children under 6 years.

A R REFLECTION RIVER CRUISES

ARRTAS

Tall Timbers Helicopter



This helicopter experience takes in the spectacular coastlines, showcasing the history of the expansive Woolnorth Property, offering a close up of the largest windfarm in Australia and will sweep visitors over the canopy of the Tarkine Forest, the largest cold climate rainforest in the southern hemisphere.

INCLUDES:

- 30 minute scenic helicopter flight
- Safety briefing
- Expert flight commentary

Departs: Daily from Tall Timbers at 9am (Oct – May)

Duration: 30 minutes

| PRICE PER PERSON: | 1 NOV 09 – 30 MAY 10 |
|-------------------|----------------------|
| Minimum 2 people | \$825 |
| 3 people | \$615 |
| 4 people | \$425 |
| 5 people | \$330 |

Not suitable for children under 6 years. Other prices apply 1 Oct 10 – 31 Mar 11

TALL TIMBERS ADVENTURE TOURS

TTATAS

Tall Timbers Adventure Tour



Experience the "Edge of the World" on this full day adventure tour. The tour includes the spectacular rugged coastline of the West Coast with views of Woolnorth Wind Farm and the largest cool climate rainforest in the Southern Hemisphere, The Tarkine.

INCLUDES:

- Oka 14 seat 4WD vehicle
- Morning tea
- Gourmet lunch
- Tasmanian Wine and beverages
- Experienced local guide

Departs: Daily from Tall Timbers at 9am (Nov – Jun, Sep – Mar)

Returns: 5pm

| PRICE: | 1 NOV 09 – 30 JUN 10 | 1 SEP 10 – 31 MAR 11 |
|------------------|----------------------|----------------------|
| Adult | \$240 | \$260 |
| Child 4-14 years | \$115 | \$125 |

TALL TIMBERS ADVENTURE TOURS

TTATAS