



Kelly's Knob Lookout, Kununurra

## Our Favourites

Explore Purnululu National Park and the Bungle Bungle Range

Tour the Argyle Diamond Mine and buy a pink diamond from a showroom in Kununurra

See a Kununurra sunset from Kelly's Knob Lookout

Cruise the Ord River or Lake Argyle

Explore Tunnel Creek, Windjana Gorge and Geikie Gorge National Parks

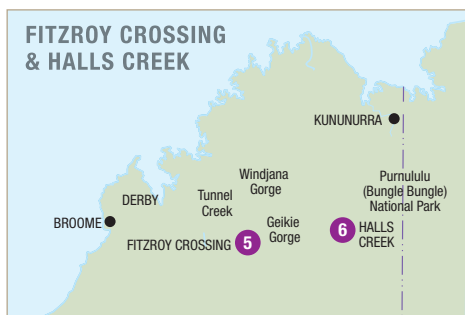
Visit Wolfe Creek Crater and China Wall

Fish for barramundi on the Fitzroy River

Clear blue skies, rich red earth and rugged vistas, Kununurra is the eastern gateway to some of the Kimberley's most renowned attractions. Absorb the enormity of Purnululu National Park with a scenic light plane or helicopter flight, spend the day exploring the amazing beehive domes of the Bungle Bungles. There's the largest man-made lake in Australia, Lake Argyle. It's so big some call it an inland sea. Then there's the Argyle Diamond Mine – the largest open-cut diamond mine in the world. Treat yourself to a fine Argyle diamond from one of the showrooms, or browse the many art galleries showcasing local and Aboriginal artwork. You'll find an amazing variety of flora and fauna along the Ord River, a popular spot for fishing or a scenic boat cruise.

Straddling the Fitzroy River, Fitzroy Crossing acts as a perfect stopover for those exploring the nearby national parks of the Kimberley. Make it your base to explore Tunnel Creek and Windjana Gorge National Parks. Be sure you head to the river, which is legendary for barramundi fishing. A journey to Geikie Gorge National Park will reward you with spectacular waterways surrounded by enormous cliffs that hint at ancient times. For a true appreciation of the local history and culture, take an indigenous tour and learn all about bush tucker and Aboriginal medicine.

About three hours from Fitzroy Crossing you'll find Halls Creek, rich with the influence of the gold mining industry. In this part of the Kimberley there are amazing natural attractions including the phenomenal Wolfe Creek Crater, the second largest crater in the world, as well as a six metre high wall of quartz rock, known as China Wall.



## FIND YOUR ACCOMMODATION

### KUNUNURRA

REF.	HOTELS	PAGE
2	All Seasons Kununurra ★★★☆	30
1	Kununurra Country Club Resort ★★★★★	31
3	Kununurra Lakeside Resort ★★★☆	30
4	Pinctada Kimberley Grande ★★★★★	30

### FITZROY CROSSING AND HALLS CREEK

REF.	HOTELS	PAGE
5	Fitzroy River Lodge ★★★★★	31
6	Kimberley Hotel, Halls Creek ★★★☆	31

# Kununurra

## All Seasons Kununurra ★★☆☆



Surrounded by tropical gardens, All Seasons Kununurra is a short walk from the town centre and four kilometres from the airport.

Town Centre 1km  
Map page 29 Ref. 2

Corner Messmate Way and Victoria Highway, Kununurra

### PROPERTY FEATURES:

- Restaurant ▪ Bar ▪ Pool
- Room service (limited) ▪ Non smoking
- Internet access (wireless)
- Guest laundry ▪ Parking
- Courtesy airport transfers (available if pre-booked)

### ACCOMMODATION FEATURES:

- Air-conditioning ▪ In-room movies (free)
- Tea/coffee making facilities
- Ironing facilities ▪ Hair dryer

Room serviced daily

From **\$74** PER ROOM PER NIGHT\*

1 APR – 9 MAY, 1 – 30 SEP 11	ADULTS	1 NT	3 NTS	5 NTS
Standard Suite	1 to 2	140	280	560
	1 to 2	191	382	764
1 JUN – 31 AUG 11	ADULTS	1 NT	3 NTS	5 NTS
Standard Suite	1 to 2	191	382	764
	1 to 2	240	480	960
1 OCT 11 – 31 MAR 12	ADULTS	1 NT	3 NTS	5 NTS
Standard Suite	1 to 2	111	222	444
	1 to 2	160	320	640

Other prices apply 10 – 31 May 11.

**Children** 0 to 15 years – free when sharing with an adult and using existing bedding.

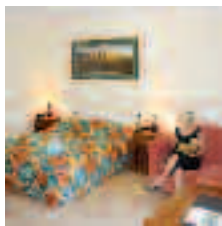
**Max capacity** Standard – 3, Suite – 4.

ALLKXN

### TRAVELPOINT BONUS

FREE Night Offer: Stay 3 nights, pay for 2.  
(3 and 5 night prices include 1 free night)

## Kununurra Lakeside Resort ★★☆☆



Situated alongside the stunning Lake Kununurra, offering a tranquil environment from which to explore the Kimberley.

Town Centre 2.5km  
Map page 29 Ref. 3

Casuarina Way, Kununurra

### PROPERTY FEATURES:

- Restaurant ▪ Bar
- Pool ▪ Wharf ▪ Deli
- Internet facilities ▪ Non smoking
- Courtesy airport transfers (available if pre-booked)

### ACCOMMODATION FEATURES:

- Air-conditioning
- Tea/coffee making facilities
- Limited cooking facilities with microwave (Self Catering Units)

Motel Room serviced daily  
Self Catering Unit serviced every 4 days



From **\$124** PER ROOM PER NIGHT\*

1 APR – 30 SEP 11	ADULTS	1 NT	3 NTS	5 NTS
Self Catering Unit Motel	1 to 2	185	555	925
	1 to 2	205	615	1025
1 OCT 11 – 31 MAR 12 <sup>^</sup>	ADULTS	1 NT	3 NTS	6 NTS
Self Catering Unit Motel	1 to 2	185	370	740
	1 to 2	205	410	820

**Children** 0 to 11 years – free when sharing with an adult and using existing bedding.

**Max capacity** 3.

KUNKXN

### TRAVELPOINT BONUS

<sup>^</sup> FREE Night Offer: Stay 3 nights, pay for 2 or stay 6 nights, pay for 4. (3 night price includes 1 free night, 6 night price includes 2 free nights)

## Pinctada Kimberley Grande ★★☆☆



THE GRANDE BISTRO

20 Victoria Highway, Kununurra

Take a journey to a timeless land of majestic outback vistas, millions of years in the making.

The homestead-style resort captures the Kimberley's sense of place and space. The colours and textures of the landscape are reflected in the décor, furnishings and original artwork.

Pinctada Kimberley Grande offers well-appointed spa suites, graciously sized guest rooms, a range of dining options, a sports bar with super size screen, a 25 metre swimming pool with spa and lap lanes, and personalised service.

### PROPERTY FEATURES:

- Restaurants (2)
- Room service (limited)
- Pool
- Spa
- Parking

### ACCOMMODATION FEATURES:

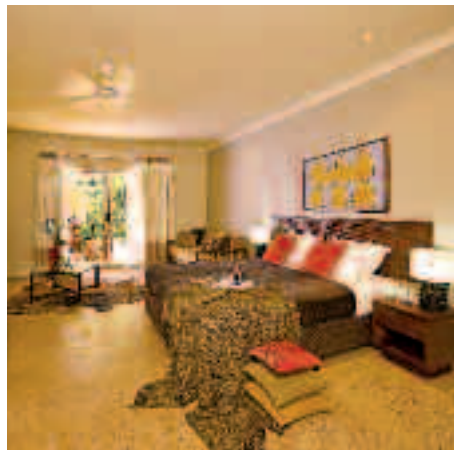
- Air-conditioning
- Fan
- Tea/coffee making facilities
- Cable TV
- Ironing facilities
- Safe
- Hair dryer

Room serviced daily

Town Centre 1.5km  
Map page 29 Ref. 4



From **\$160** PER ROOM PER NIGHT\*



1 APR – 31 MAY 11	ADULTS	1 NT	3 NTS	5 NTS
Kings Terrace	1 to 2	180	540	900
Kings Garden View	1 to 2	200	600	1000
Kings Pool View	1 to 2	200	600	1000
Durack Spa Suite	1 to 2	260	780	1300
Kimberley Spa Suite	1 to 2	325	975	1625

1 JUN – 30 SEP 11	ADULTS	1 NT	3 NTS	5 NTS
Kings Terrace	1 to 2	200	600	1000
Kings Garden View	1 to 2	220	660	1100
Kings Pool View	1 to 2	240	720	1200
Durack Spa Suite	1 to 2	285	855	1425
Kimberley Spa Suite	1 to 2	350	1050	1750

1 OCT 11 – 31 MAR 12	ADULTS	1 NT	3 NTS	5 NTS
Kings Terrace	1 to 2	160	480	800
Kings Garden View	1 to 2	180	540	900
Kings Pool View	1 to 2	200	600	1000
Durack Spa Suite	1 to 2	220	660	1100
Kimberley Spa Suite	1 to 2	260	780	1300

**Children** 0 to 11 years – free when sharing with an adult and using existing bedding.

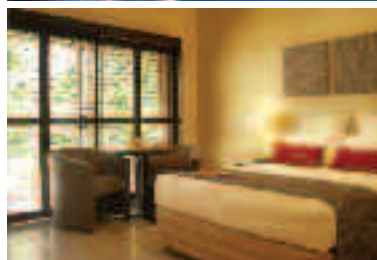
**Max capacity** 3 adults or 2 adults/2 children.

TKGKNX

## Kununurra Country Club Resort ★★★★★



From **\$152** PER ROOM PER NIGHT\*



### 47 Coolibah Drive, Kununurra

Surrounded by some of the country's most breathtaking and abundant natural wonders including the Bungle Bungles and Mirima National Park, Kununurra Country Club is a perfect base to explore the region. Centrally located in the heart of Kununurra, the resort offers smart and modern rooms set amongst tropical gardens. Relax by the pool whilst enjoying a cocktail from one of the bars. After a day exploring the surrounding region treat yourself at the resort's restaurant, Kelly's Bar and Grill – the perfect escape experience.

#### PROPERTY FEATURES:

- Restaurant ▪ Bars (3) ▪ Pool ▪ Parking ▪ Guest laundry
- Courtesy airport transfers (available if pre-booked)

#### ACCOMMODATION FEATURES:

- Air-conditioning ▪ Tea/coffee making facilities ▪ In-room movies (free)
- Internet access (wireless) ▪ Hair dryer ▪ Ironing facilities

Room serviced daily

Town Centre 50m  
Map page 29 Ref. 1



1 APR – 31 OCT 11	ADULTS	1 NT	2 NTS	4 NTS
Club Room <sup>^</sup>	1 to 3	225	450	675
Triple Room	1 to 3	257	514	1028
Apartment	1 to 4	294	588	1176
1 NOV 11 – 31 MAR 12	ADULTS	1 NT	2 NTS	4 NTS
Club Room <sup>^</sup>	1 to 3	202	404	606
Triple Room	1 to 3	235	470	940
Apartment	1 to 4	272	544	1088

**Children** 0 to 4 years – cot free of charge.  
5 to 17 years – adult prices apply.

**Max capacity** Club Room/Triple Room – 3, Apartment – 4.

**COUKNX**



#### TRAVELPOINT BONUS

<sup>^</sup> FREE Night Offer: Stay 4 nights, pay for 3.  
(4 night price includes 1 free night)

## Fitzroy River Lodge ★★★★★



Lot 277 Great Northern Highway,  
Fitzroy Crossing

#### PROPERTY FEATURES:

- Pool ▪ Barbecue area ▪ Tennis court
- Parking (undercover) ▪ Guest laundry
- Kiosk ▪ Fuel outlet

#### ACCOMMODATION FEATURES:

- Air-conditioning ▪ Fan ▪ Kitchen (Units)
- Tea/coffee making facilities
- In-room movies (except Boab rooms and Safari Lodges) (free)
- Internet access (broadband)
- Ironing facilities
- All rooms non smoking

Note: Television not provided in Safari Lodge

Room serviced daily

At the lodge, relax on 50 acres of natural bush with shady trees and landscaped gardens, situated on the banks of the Fitzroy River.

Town Centre 3.5km  
Map page 29 Ref. 5

From **\$149** PER ROOM PER NIGHT\*

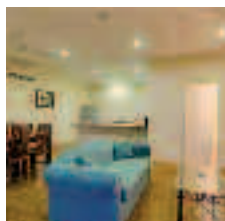
1 APR 11 – 31 MAR 12	ADULTS	1 NT	3 NTS	5 NTS
Boab Room/Safari Lodge	1 to 2	149	447	745
Motel	1 to 2	199	597	995
Riverview Studio	1 to 2	310	930	1550
Unit	1 to 4	310	930	1550
2 Bedroom Family Unit	1 to 6	395	1185	1975

**Children** 0 to 3 years – cot/bed charge payable direct.  
4 to 12 years – adult prices apply.

**Max capacity** Boab Room/Riverview Studio – 2,  
Safari Lodge/Motel – 3, Unit – 4,  
2 Bedroom Family Unit – 6.

**FITFIZ**

## Kimberley Hotel, Halls Creek ★★☆☆



Roberta Avenue, Halls Creek

#### PROPERTY FEATURES:

- Restaurant ▪ Bars (2)
- Room service (limited)
- Barbecue area ▪ Pool ▪ Internet café
- Guest laundry ▪ Parking
- Courtesy airport transfers (available if pre-booked)

#### ACCOMMODATION FEATURES:

- Air-conditioning ▪ Fan
- Tea/coffee making facilities ▪ Cable TV
- In-room movies (free)
- Ironing facilities ▪ Hair dryer

Room serviced daily

Set in delightful gardens, the hotel features large rooms, a colonial style lounge, traditional saloon bar and restaurant.

Town Centre 500m  
Map page 29 Ref. 6



From **\$189** PER ROOM PER NIGHT\*

1 APR 11 – 31 MAR 12	ADULTS	1 NT	3 NTS	5 NTS
Corporate	1 to 2	189	567	945
Deluxe	1 to 2	229	687	1145
Family	1 to 4	309	927	1545

**Children** 0 to 12 years – free when sharing with an adult and using existing bedding.

**Max capacity** Corporate – 2, Deluxe – 3, Family – 6.

**KIMKIM**

# Tours from Kununurra

## Lake Argyle and Ord River



Spectacular Lake Argyle is Australia's largest man-made lake, created by the Ord River Dam. Travel the 70 kilometres from Kununurra to Lake Argyle by road. Enjoy a ground tour of Lake Argyle including a visit to the historic Durack Homestead.

A spectacular 55 kilometre boat cruise back to Kununurra along the Ord River takes you through a variety of different landscapes. See amazing scenery, crocodiles, flying foxes and prolific birdlife whilst listening to informative commentary given by the skipper.

**INCLUDES:**

- Ground tour of Lake Argyle
- Visit Durack Homestead
- View Lake Argyle from a scenic lookout
- Ord River cruise
- Afternoon tea
- Informative commentary
- Return transfers from Kununurra accommodation

**Departs:** Daily from Kununurra at 11:30am (Apr – Oct)

**Returns:** 5:30pm

**PRICE:**

Adult	\$165
Child 0-15 years	\$125

Full day tour including 2 hour Lake Argyle cruise also available.

TRIPLE J TOURS

TRIKNX

## Bungle Bungle Scenic Flight



The scenic flight from Kununurra to the Bungle Bungle is an exhilarating way to take in the Kimberley's best icons. Fly past the Diversion Dam, Lake Kununurra and over the Ord River Irrigation Area before crossing the Carr Boyd Range and Lake Argyle. Fly past Lissadell Homestead, over the Osmand Range and on to the Bungle Bungle for unforgettable views of the ancient mountain range. Orbit the Argyle Diamond Mine on the return journey.

Enhance this flight of a lifetime by upgrading to the Diamond Class tour, flying in Slingair's Propjet Cessna Grand Caravan. Seating just 13 passengers in air conditioned comfort, the aircraft is remarkably quiet enabling you to hear the commentary and talk freely without a headset.

**INCLUDES:**

- 2 hour scenic flight
- Expert commentary
- Return transfers from Kununurra accommodation

**Departs:** Daily from Kununurra at 6am, 9am, 2:30pm  
Diamond Class available May – Sep

**Duration:** 2 hours

**PRICE:**

Adult	\$315	<b>DIAMOND CLASS</b> \$349
Child 3-12 years	\$265	\$299

Transfers from El Questro Wilderness Park and Home Valley Station also available.

SLINGAIR HELIWORK WA

SLIKNX

## Bungle Bungle Scenic Flight and Argyle Mine



Combine the treasures of nature with the treasures of the earth in this fly/drive day tour. Fly from Kununurra to the Argyle Diamond Mine for an informative ground tour of the world's largest supplier of diamonds. Argyle Diamonds are found in a range of colours including white, champagne and pink. Argyle is the world's primary source of rare pink diamonds, the company's signature stone.

Board your plane for the scenic flight over the Bungle Bungle, returning to Kununurra via the Ord River, Lake Argyle and the Carr Boyd Range.

**INCLUDES:**

- Scenic plane flight
- Argyle Diamond Mine bus tour
- Buffet lunch at the mine
- Diamond gift pack and Argyle information
- Expert commentary
- Return transfers from Kununurra accommodation

**Departs:** Daily from Kununurra at 10:30am (Apr – Oct), 9:30am (Nov – Mar)

**Returns:** 4:30pm

**PRICE:**

Adult	\$610
-------	-------

Not suitable for children under 12 years. Transfers from El Questro Wilderness Park and Home Valley Station also available.

SLINGAIR HELIWORK WA

SLIKNX

## Bungle Bungle & Lake Argyle Plane/Heli Combo



Depart Kununurra on a scenic plane flight over Lake Kununurra and the Ord River Irrigation Area as well as the huge expanse of Lake Argyle. Fly over Lissadell and Texas Downs Stations before entering the World Heritage Listed Purnululu National Park, landing at Purnululu airfield, Bungle Bungle.

Take an exhilarating 30 minute low-level helicopter flight over the sandstone massif of the Bungle Bungle Range and the hidden red rock gorges of the northwest tip, Piccaninny Gorge and the unique beehive formations. Return by aeroplane passing over the massive Argyle Diamond Mine.

**INCLUDES:**

- Scenic plane flight
- Expert commentary
- 30 minute low-level helicopter flight over the Bungle Bungle and Piccaninny Creek
- Return transfers from Kununurra accommodation

**Departs:** Daily from Kununurra at 9am (Apr – Oct)

**Returns:** 1pm

**PRICE:**

Adult	\$650
Child 3-12 years	\$600

Transfers from El Questro Wilderness Park also available.

SLINGAIR HELIWORK WA

SLIKNX

## Best of Bungle Bungle in a Day



This comprehensive Bungle Bungle day tour from Kununurra has it all. Take a magical scenic flight over Lake Argyle to the World Heritage Listed Purnululu National Park where the unique striped domes of the Bungle Bungles are found. Travel by 4WD to Echidna Chasm considered one of Western Australia's most amazing walking destinations. Discover the acoustics of Cathedral Gorge before a walk along the dry bed of Piccaninny Creek through to the Bungle Bungle domes. Return to Kununurra on a scenic flight over these unique formations.

### INCLUDES:

- Scenic plane flight
- Picnic lunch
- 4WD touring
- Walking tour of Echidna Chasm, Cathedral Gorge and the dry bed of Piccaninny Creek
- Knowledgeable guide
- National park fees
- Return transfers from Kununurra accommodation

**Departs:** Daily from Kununurra at 7:30am (Apr – Oct)

**Returns:** 5pm



### PRICE:

Adult	\$845
Child 7-12 years	\$676

KIMBERLEY WILDERNESS ADVENTURES

KIMKNX

## Bungle Bungle Fly In/Fly Out



Enjoy a scenic flight from Kununurra to the fabulous Bungle Bungle Range, flying over the mighty Ord River, man made Lake Argyle, Lissadell and Texas Downs Stations.

On arrival in Purnululu National Park take a 4WD tour into the heart of the famous beehive domes. Learn the heritage of the domes then take the two kilometre walk into stunning Cathedral Gorge and witness the magnificent natural amphitheatre. Enjoy a relaxed lunch before returning to base for the afternoon flight back to Kununurra.

### INCLUDES:

- Scenic plane flight
- Lunch
- Afternoon tea
- Knowledgeable guide
- 4WD and walking tour of the Bungle Bungles and Cathedral Gorge
- National park fees
- Return transfers from Kununurra accommodation

**Departs:** Daily from Kununurra at 8:30am (Apr – Oct)

**Returns:** 5pm

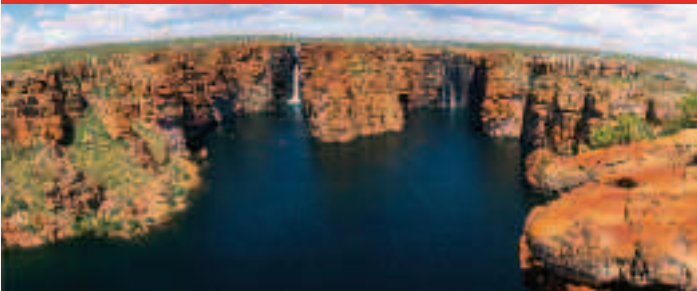
### PRICE:

Adult	\$660
Child 6-12 years	\$528

EAST KIMBERLEY TOURS

EASKNX

## Adventure Flight & Home Valley Ground Tour



Slingair has taken the best features of the North East Kimberley and packed them into one fantastic tour.

Departing from Kununurra on a scenic plane flight, croc spot along the Ord River, fly over Cape Dommet, King George Falls, Berkeley River, Oombulgurri and the Durack River.

Land at Home Valley Station for a guided ground tour and an overview of its tourism, cattle and training facilities. Enjoy lunch at the Dusty Bar & Grill then cool off with a swim in the resort pool before the scenic flight over the Cockburn Range, El Questro Station and the Kununurra Diversion Dam back to Kununurra.

### INCLUDES:

- Scenic plane flight
- Home Valley Station tour
- Lunch
- Expert commentary
- Return transfers from Kununurra accommodation

**Departs:** Mon, Wed, Fri, Sun from Kununurra at 9am (Apr – Sep)

**Returns:** 2pm

### PRICE:

Adult	\$629
Child 3-12 years	\$629

SLINGAIR HELIWORK WA

SLIKNX

## 2 Day Bungle Bungle Air Safari



### HIGHLIGHTS:

- Purnululu National Park
- Cathedral Gorge
- Piccaninny Creek
- Echidna Chasm
- Mini Palms Gorge

### Day 1: Kununurra to Purnululu National Park, Cathedral Gorge, Piccaninny Creek

Take a scenic flight to World Heritage Listed Purnululu National Park. Marvel at Cathedral Gorge and walk up the dry bed of Piccaninny Creek, where a local guide will bring the history of the domes to life. Overnight at Bungle Bungle Wilderness Lodge. (LD)

**Day 2: Echidna Chasm, Mini Palms Gorge** After breakfast, take a hike along a Livistona palm-fringed trail into Echidna Chasm. Take a more challenging walk along the river bed to Mini Palms Gorge, where the afternoon sun creates an ethereal glow. An afternoon scenic flight back to Kununurra concludes the tour. (BL)

### INCLUDES:

- 1 nights accommodation with private facilities
- Scenic flights and 4WD touring
- Meals as indicated (B = breakfast, L = lunch, D = dinner)
- National park fees
- Return transfers from Kununurra accommodation

**Departs:** Daily from Kununurra (Apr – Oct)  
Sun, Mon, Wed, Fri at 5:30am  
Tue, Thu, Sat at 8:30am

**Returns:** 5pm



### PRICE PER PERSON:

	STANDARD	SUPERIOR
Adult twin share	\$1395	\$1425
Adult sole use	\$1565	\$1610
Child 7-12 years	\$1116	\$1140

KIMBERLEY WILDERNESS ADVENTURES

KIMKNX

# Tours from Kununurra

## 2 Day Bungles & Diamond Mine



### HIGHLIGHTS:

- Argyle Diamond Mine
- Purnululu National Park
- Echidna Chasm
- Cathedral Gorge

#### Day 1: Kununurra to Purnululu National Park via Argyle Diamond Mine

From Kununurra, enjoy a scenic flight over the mighty Ord River and Lake Argyle before landing at Argyle Diamond Mine, one of the world's largest single producers of diamonds. Enjoy an informative mine tour whilst viewing some of the famous Argyle Diamonds on display. Lunch and refreshments are included and will be served at Argyle Diamond's staff village.

After lunch, reboard the plane and continue the scenic flight over the Osmond Ranges to World Heritage Listed Purnululu National Park and the Bungle Bungle Range. Arrive at the Bungle Bungle Bush Camp in time for afternoon tea. Relax in your cabin or enjoy the sunset on another beautiful Kimberley day before a delicious dinner. (LD)

#### Day 2: Echidna Chasm, Cathedral Gorge to Kununurra

Enjoy breakfast before setting off to explore Echidna Chasm. After discovering the northern end of Purnululu National Park, return to camp for a buffet lunch before heading to the southern end of the park to explore the famous icons of the Bungle Bungles including the beehive domes and Cathedral Gorge. Reboard the plane in the afternoon for the return trip to Kununurra. (BL)

### INCLUDES:

- 1 nights tented accommodation in a permanent safari camp with shared facilities
- Return scenic flights from Kununurra
- Argyle Diamond Mine tour
- 4WD touring
- Knowledgeable guide
- Meals as indicated (B = breakfast, L = lunch, D = dinner)
- National park fees
- Return transfers from Kununurra accommodation

**Departs:** Daily from Kununurra at 9:45am (Apr – Sep)

**Returns:** 5pm



PRICE PER PERSON:	STANDARD CABIN	ENSUITE CABIN
Adult	\$1480	\$1530

Not suitable for children under 13 years.

EAST KIMBERLEY TOURS

EASKNX

## 4 Day Kimberley Traverse



### HIGHLIGHTS:

- Purnululu National Park
- Halls Creek ▪ Geikie Gorge
- China Wall

#### Day 1: Kununurra to Purnululu National Park (Bungle Bungle)

Depart Kununurra for Purnululu National Park a spectacular wilderness area and home of the Bungle Bungle Range. More than 20 million years of erosion and river movements have formed these huge black and orange striped domes. Travel down the 4WD Spring Creek Track via Turkey Creek (Warmun), spend the afternoon exploring the northern part of the park. Hike into Echidna Chasm, a mysterious cleft in the rock massif. Spend the next two nights at Bungle Bungle Wilderness Lodge. (LD)

#### Day 2: Bungle Bungle Range

This morning drive to the southern side of the Bungle Bungle massif. Explore majestic Cathedral Gorge and test out the acoustics within this natural amphitheatre. An easy-paced walk along the dry bed of Piccaninny Creek is the best way to inspect the domes up close. Discover hidden gorges and diverse vegetation. Your guide will bring the natural history of the Bungle Bungle domes to life, these strange beehive formations will seem even more fascinating once explained. Learn about the Aboriginal people's rich knowledge of the area and the cultural significance of the park, as well as bush tucker and bush medicine skills. Take an optional helicopter flight over the domes (own expense). Watch the sun set over the domes, before returning to the lodge. (BLD)

#### Day 3: Purnululu National Park to Fitzroy Crossing

Examine the ruins of Old Halls Creek and see the curious quartz ridge of China Wall before continuing to Fitzroy Crossing and the Fitzroy River. Overnight at Fitzroy River Lodge, Fitzroy Crossing. (BLD)

#### Day 4: Fitzroy Crossing to Broome

Cruise Geikie Gorge with a local guide and experience this amazing area from an Aboriginal cultural perspective. Take in the mighty Fitzroy River before travelling to Broome. (BL)

### INCLUDES:

- 3 nights accommodation with private facilities
- 4WD touring ▪ Maximum 20 guests
- National park fees
- Meals as indicated (B = breakfast, L = lunch, D = dinner)
- Transfers in Kununurra and Broome

**Departs:** Most days from Kununurra at 7am (4 May – 19 Oct 11)

**Returns:** Broome at 5pm



### PRICE PER PERSON:

Adult twin share	\$2195
Adult sole use	\$2635
Child 7-15 years	\$1756

Discounted prices apply 4 May – 23 Jun, 2 – 19 Oct 11.

KIMBERLEY WILDERNESS ADVENTURES

KIMKNX

## 4 Day Domes & El Questro



### HIGHLIGHTS:

- Purnululu National Park
- Cathedral Gorge
- El Questro Station

#### Day 1: Kununurra

Arrive in Kununurra and transfer to your hotel. Today is at leisure to explore the town, gateway to the Kimberley region. Spend the next two nights at Kununurra Country Club Resort.

#### Day 2: Purnululu National Park

Take a scenic flight to World Heritage Listed Purnululu National Park. Fly over Lake Argyle, see the Argyle Diamond Mine and watch as the domes of the Bungle Bungle Range appear on the horizon. As you get closer, see hidden gorges and pools emerge from among the domes. On landing, journey by 4WD to the southern side of the Bungle Bungle massif and enjoy an easy walk into Cathedral Gorge. After lunch join a guided walk along the ancient dry bed of Piccaninny Creek and inspect the 350 million year old orange and black striped beehive domes up close. Your guide will bring the natural history of the domes to life. Learn of the cultural significance of the park, plus bush tucker and bush medicine skills. There's time for an optional scenic helicopter flight over the domes (own expense), before returning to Kununurra. (L)

#### Day 3: Kununurra to El Questro Wilderness Park

Drive to El Questro Station and Wilderness Park in the heart of the Kimberley. The energetic may wish to take the hike into beautiful Emma Gorge for a swim below the droplet waterfall. Perhaps travel to Zebedee Springs for a swim in the thermal pools (own expense). Overnight at El Questro – Emma Gorge Resort.

#### Day 4: El Questro to Kununurra

This morning enjoy some free time to relax at El Questro, before travelling back to Kununurra.

### INCLUDES:

- 2 nights hotel accommodation
- 1 nights safari tent accommodation with private facilities
- Return scenic flight from Kununurra to Purnululu National Park
- Lunch on day 2
- National park fees
- Return transfers from Kununurra accommodation

**Departs:** Daily from Kununurra at 8:30am (11 Apr – 12 Oct 11)

**Returns:** 1:30pm



### PRICE PER PERSON:

Adult twin share	\$1395
Adult sole use	\$1760
Child 7-12 years	\$1116

KIMBERLEY WILDERNESS ADVENTURES

KIMKNX

## 6 Day Gibb River Road Kimberley Adventure Kununurra to Broome



### HIGHLIGHTS:

- El Questro Wilderness Park
- Ord River cruise
- Gibb River Road
- Tunnel Creek
- Windjana Gorge

#### Day 1: Kununurra

Be welcomed on arrival at Kununurra Airport and transferred to your hotel. Spend the day at leisure and take in the many sights the town of Kununurra has to offer, before meeting your fellow travellers. Overnight at Kununurra Country Club.

#### Day 2: Kununurra to El Questro Wilderness Park

Relax while cruising up the Ord River to Lake Argyle and see the Ord River Irrigation Scheme plantations and Ivanhoe Crossing. Visit the historic town of Wyndham, enjoy afternoon tea and the breathtaking views from Five Rivers Lookout. Travel along the Gibb River Road through the Cockburn Ranges to El Questro Wilderness Park. Overnight at El Questro Wilderness Park – Emma Gorge Resort. (BLD)

#### Day 3: El Questro Wilderness Park to Home Valley Station

Enjoy an early morning hike into Emma Gorge and a swim at the Droplet falls. Later walk to Zebedee Springs for a dip in the thermal hot pools before taking the Gibb River Road through the Pentecost Ranges to Home Valley Station. This afternoon drive to Pentecost River and watch the spectacular sunset. Join the locals at the famous Dusty Bar and Grill for dinner. Stay the next two nights at Home Valley Station. (BLD)

#### Day 4: Home Valley Station

Rise early for a hearty breakfast followed by a demonstration on horse training and horsemanship.



Spend the afternoon relaxing by the pool or choose one of the many activities available at the station (own expense). (BLD)

#### Day 5: Home Valley Station to Mount Hart Wilderness Lodge

Travel along the Gibb River Road while witnessing the spectacular scenery on the way. Explore Galvans Gorge, before lunch and a relaxing swim. Drive to the King Leopold Ranges to take in the stunning sunset with a glass of sparkling wine and cheese. Overnight at Mount Hart Wilderness Lodge. (BLD)

#### Day 6: Mount Hart to Broome

Journey on to Tunnel Creek an amazing 750 metre flooded tube tunnel. Walk through the tunnel and water to hear the famous Aboriginal story of Jandamarra. An Aboriginal freedom fighter who used the tunnel as a hideout in the late 1800s. Explore pre-historic Windjana Gorge and search for freshwater crocodiles. Return to Broome via the Derby Boab Prison Tree. (BL)

### INCLUDES:

- 4 nights accommodation with private facilities
- 1 night accommodation with shared facilities
- Meals as indicated (B = breakfast, L = lunch, D = dinner)
- Ord River cruise
- Transfers in Broome and Kununurra

**Departs:** From Kununurra at 6pm  
 • May 26 • Jun 9, 23 • Jul 7, 21  
 • Aug 4, 18 • Sep 1, 15, 29

**Returns:** Broome at 7:30pm

### PRICE PER PERSON:

Adult twin share	\$2799
Adult sole use	\$3428
Child 5-12 years	\$2769

PINNACLE TOURS

APIPER

## 8 Day Icons of the Kimberley Air Safari



### HIGHLIGHTS:

- Ord River cruise ■ Cathedral Gorge
- Piccaninny Creek
- Echidna Chasm ■ Mini Palms Gorge
- Scenic flights to Purnululu National Park  
 El Questro Station and Mitchell Plateau
- El Questro Station

#### Day 1: Kununurra

Arrive in Kununurra, the eastern gateway to the Kimberley. Enjoy time at leisure to explore the town. Accommodation for the next two nights is at Kununurra Country Club Resort.

#### Day 2: Ord River Cruise

Join a guided cruise of the majestic Ord River. Enjoy stunning scenery and watch for freshwater crocodiles, flying foxes, birdlife and other wildlife that inhabit the area.

#### Day 3: Kununurra to Purnululu National Park

Join a scenic flight to Purnululu National Park, flying over Lake Argyle and the Argyle Diamond Mine. Journey by 4WD to the southern side of the Bungle Bungle massif. Enjoy an easy walk into Cathedral Gorge and a guided walk along Piccaninny Creek to inspect the domes up close. There is time for a scenic helicopter flight over the Bungle Bungles (own expense). Accommodation for two nights at Bungle Bungle Wilderness Lodge. (LD)

#### Day 4: Echidna Chasm, Mini Palms Gorge

Take a hike into Echidna Chasm where sunlight streams down through narrow cracks in the towering rocks. Walk along an ancient river bed to Mini Palms Gorge, with the afternoon sun creating a beautiful ethereal glow. (BLD)

#### Day 5: Purnululu National Park to El Questro Station

Early this morning fly to El Questro Station and Wilderness Park in the heart of the Kimberley. Perhaps hike into Emma Gorge for a swim or soak in



the thermal pools of Zebedee Springs (own expense). Accommodation for two nights at El Questro Wilderness Park – Emma Gorge Resort. (B)

#### Day 6: El Questro Station

Spend the day exploring the wonders of El Questro. Perhaps cruise through rugged Chamberlain Gorge or join a ranger guided horse ride (own expense).

#### Day 7: El Questro to Mitchell Plateau and Falls

Board a scenic flight to the remote Mitchell Plateau. Join a local guide and walk to Little Merten Falls continuing on to inspect ancient Aboriginal Gwion (Bradshaw) paintings. See breathtaking views as you travel to stunning Big Merten Falls. See the incredible spectacle of Mitchell Falls and enjoy a relaxing swim. After lunch choose to hike out of the falls, take a helicopter flight over stunning Mitchell Falls (included) or an optional scenic flight over the beautiful Kimberley coast (own expense). Overnight at Mitchell Falls Wilderness Lodge. (BLD)

#### Day 8: Mitchell Plateau to Kununurra

After breakfast board a scenic flight over the dramatic landscape of the Kimberley to Kununurra. (B)

### INCLUDES:

- 2 nights hotel accommodation ■ Scenic flight
- 5 nights safari tent accommodation ■ Ord River cruise
- Meals as indicated (B = breakfast, L = lunch, D = dinner)
- Scenic flights as per itinerary ■ National park fees
- Return transfers from Kununurra accommodation

**Departs:** Mon, Wed to Sat from Kununurra at 11:30am (12 May – 1 Oct 11)

**Returns:** 9:30am

### PRICE PER PERSON:

	STANDARD	SUPERIOR
Adult twin share	\$4195	\$4255
Adult sole use	\$5215	\$5305
Child 7-12 years	\$3356	\$3404

KIMBERLEY WILDERNESS ADVENTURES

KIMKNX