

# Southern Queensland Islands

## Heron Island ♦♦♦♦



### Heron Island, via Gladstone



Heron Island is a true coral cay, located right on the Great Barrier Reef. The island is ribboned by sugar white sands, crystal clear waters and acres of brilliant coral with beautifully coloured marine life – a real nature lover's paradise.

Heron offers many activities such as guided island and reef walks, semi-submersible cruises and beach picnics. An amazing array of animal and bird life can also be discovered throughout the year. And of course, Heron is famous for its scuba diving and snorkelling.

If it's school holidays, you can sign the kids up for the Heron Kids Junior Rangers Program (7-12 years), where they'll get up close and personal with a wonderful variety of marine creatures, and explore the fascinating coral cay forest and woodlands.

Heron Island is a haven of marine colour and relaxation, with stunning ocean views from many of the rooms.

### PROPERTY FEATURES:

- Restaurant ▪ Bar ▪ Guest lounge
- Pool ▪ Dive shop ▪ Boutique
- Aqua Soul Spa (day spa)
- Marine Park Interpretive Centre
- Internet facilities ▪ Guest laundry
- Heron Kids Junior Rangers Program (7-12 years) operating Australian eastern seaboard school holidays (extra charge)
- Departure showers
- Public telephones
- Tennis court (floodlit)

### COMPLIMENTARY ACTIVITIES INCLUDE:

- Guided reef and island ecology walks
- Tennis ▪ Birdlife walks
- Wildlife presentations ▪ Board games
- Snorkelling lessons in swimming pool
- Stargazing ▪ Nature slide show

### ACTIVITIES AVAILABLE AT AN EXTRA CHARGE:

- Scuba diving ▪ Guided snorkelling tour
- Semi-submersible coral viewing cruise
- Fishing trips
- Sunset wine and cheese cruise
- Snorkelling equipment
- Spa treatments and massage

### ACCOMMODATION FEATURES:

- Fan ▪ Balcony or patio ▪ Tea/coffee making facilities
- Air-conditioning (Wistari/Point Suites and Beach House)
- Mini bar, CD player (except Turtle and Reef Rooms)
- Hair dryer

### DAY SPA FEATURES:

- Individual treatment rooms (2) ▪ Massage ▪ Facials
- Body treatments ▪ Manicure and pedicures

### Room serviced daily

Check-in 2pm Check-out 10am

Map page 13 Ref. 13

### HOW TO GET THERE:

From Gladstone Airport – 30 minutes by scheduled helicopter.

PRICE:	ONE WAY
Adult	\$370
Child 2-12 years	\$200

Prices are subject to change without notice. Private helicopter charter prices also available.

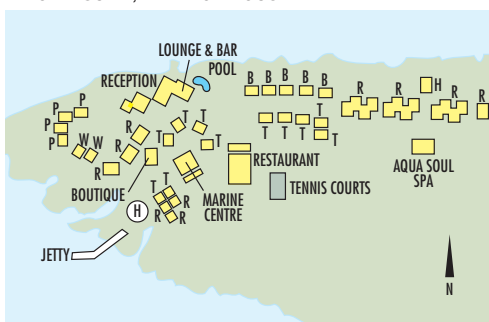
From Gladstone Marina – 2 hours by launch.

Courtesy coach transfers are available between Gladstone Airport and Marina to meet launch arrival and departure.

PRICE:	ONE WAY
Adult	\$100
Child 2-12 years	\$50

Transfers must be booked in conjunction with accommodation.

ACCOMMODATION: T. TURTLE ROOM, R. REEF ROOM, B. HERON BEACHSIDE SUITE, W. WISTARI SUITE, P. POINT SUITE, H. BEACH HOUSE



### DIVE PACKAGE

#### INCLUDES:

- 2 nights accommodation ▪ Breakfast, lunch and dinner daily
- 5 standard dives to Heron and Wistari Reefs
- Air, scuba tank, regulator, buoyancy control device and weights

PRICE PER PERSON	ADULTS	2 NTS	EXTRA NTS
------------------	--------	-------	-----------

1 APR – 16 DEC 11, 16 JAN – 31 MAR 12			
Turtle Room	2	749	200
Reef Room	2	829	240

Other prices apply 17 Dec 11 – 15 Jan 12. Valid for certified divers. Other room types and 10 Dive Package also available. Child prices on application.

## Heron Island



TURTLE ROOM



HERON BEACHSIDE SUITE

From **\$399** PER ROOM PER NIGHT\*

### ROOM AND ALL MEALS

1 APR – 16 DEC 11, 16 JAN – 31 MAR 12	ADULTS	1 NT	4 NTS	7 NTS
Turtle Room	1	377	1508	2639
	2	399	1596	2793
Reef Room	1	457	1828	3199
	2	479	1916	3353
Heron Beachside Suite	1	577	2308	4039
	2	599	2396	4193
Wistari Suite/Point Suite	1	777	3108	5439
	2	799	3196	5593
Beach House	1	807	3228	5649
	2	829	3316	5803
17 DEC 11 – 15 JAN 12	ADULTS	1 NT	4 NTS	7 NTS
Turtle Room	1	426	1704	2982
	2	448	1792	3136
Reef Room	1	506	2024	3542
	2	528	2112	3696
Heron Beachside Suite	1	627	2508	4389
	2	649	2596	4543
Wistari Suite/Point Suite	1	827	3308	5789
	2	849	3396	5943
Beach House	1	837	3348	5859
	2	859	3436	6013

**Includes** Breakfast daily.  
Two course or buffet lunch daily.  
Three course or buffet dinner daily.  
Wistari Suite, Point Suite and Beach House also include bottle of wine on arrival, evening canapés, turndown service and use of snorkelling equipment.

**Children** 0 to 12 years – See Kids Stay and Eat FREE program (except Wistari Suite and Point Suite).

**Max capacity** Turtle Room – 4, Reef Room – 5, Heron Beachside Suite/Beach House – 3, Wistari Suite/Point Suite – 2 adults.

HERHEI

### KIDS STAY AND EAT FREE PROGRAM

Children 0 to 12 years stay and eat FREE when sharing with an adult and using existing bedding. Cot free of charge.

## Wilson Island ♦♦♦♦♦



Wilson Island, via Gladstone and Heron Island

Wilson Island is a tiny coral cay located just 40 minutes from Heron Island. A divine sweep of castor sugar sands that is home to turtles and birds, Wilson is both part of the Great Barrier Reef and surrounded by it. Its pristine waters host an unimaginable variety of marine life including colourful coral and fish, with some of the best snorkelling just off the beach.

Offering designer-inspired tented accommodation, Wilson Island provides just 12 guests with access to the magnificent reef and beach environments, including rare turtle and bird breeding grounds.

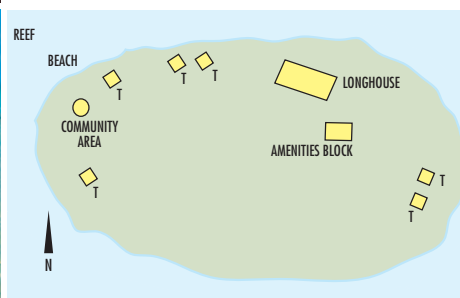
A true communion with nature is at the core of the Wilson Island experience – to live and enjoy life as a castaway. Days can be filled snorkelling and exploring the island, watching turtles and birds nesting and the birth of hatchlings (seasonal), or simply lazing in a hammock.

Wilson Island is the Great Barrier Reef as nature intended.

### PROPERTY FEATURES:

- 6 permanent tented rooms
- Shared amenities
- Longhouse – central dining and relaxation area

### ACCOMMODATION: T. LUXURY TENT



From **\$918** PER ROOM PER NIGHT\*

### COMPLIMENTARY ACTIVITIES INCLUDE:

- Snorkelling and use of equipment
- Guided reef and island walks

### ACCOMMODATION FEATURES:

- Raised timber deck
- King bed
- Bathrobes
- Toiletries
- 1 designated private shower and dressing area per tent, located in the washhouse

### Room serviced daily

Map page 13 Ref. 12

### HOW TO GET THERE:

**From Gladstone** – By launch or helicopter to Heron Island. Refer to page 36 for details.

**From Heron Island** – 40 minutes by launch.

Transfers between Heron and Wilson Islands on check-in and check-out are included in the accommodation price. Guests will be met on arrival at Heron Island.

### ROOM AND ALL MEALS

1 APR 11 – 25 JAN, 3 – 31 MAR 12	ADULTS	1 NT	4 NTS	7 NTS
Luxury Tent	1	833	2684	4697
	2	1080	3672	6426

Resort is closed 26 Jan – 2 Mar 12.

**Includes** All meals and beverages including premium Australian wines daily.  
Return transfers from Heron Island.

**Children** 0 to 12 years – not catered for.

**Max capacity** 2.

WILWIL

# Southern Queensland Islands

## Lady Elliot Island Eco Resort ◆◆◆

From **\$253** PER ROOM PER NIGHT\*



### Lady Elliot Island, via Hervey Bay or Bundaberg



Lady Elliot is a nature retreat, true coral island and a designated marine park, home to green and loggerhead turtles and sea birds (seasonal). Guests can literally step off the beach into an underwater paradise teeming with coral, fish, turtles and manta rays. Relaxed modest accommodation is near the beachfront where you can completely unwind.

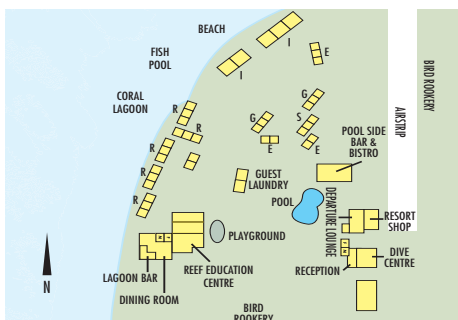
#### PROPERTY FEATURES:

- Restaurant ▪ Bar ▪ Pool
- Reef Education Centre
- Dive shop ▪ Children's playground ▪ Library
- Resort shop ▪ Public telephone
- Reef Rangers Kids Club (5-12 years) operating selected school holidays (extra charge)
- Guest laundry

#### COMPLIMENTARY ACTIVITIES INCLUDE:

- Reef walking
- Snorkelling and use of equipment
- Fish feeding
- Turtle tours (Nov – Apr)
- Table tennis
- Bird watching (seasonal)
- Volleyball ▪ Island history walk
- Whale migration (Jul – Oct)

**ACCOMMODATION: E. ECO CABIN, S. SHEARWATER BUNK ROOM, G. GARDEN UNIT, R. REEF UNIT, I. 2 BEDROOM ISLAND SUITE**



#### ACTIVITIES AVAILABLE AT AN EXTRA CHARGE:

- Scuba diving (courses available)
- Snorkelling tour
- Glass bottom boat tour

#### ACCOMMODATION FEATURES:

- Air-conditioning (2 Bedroom Island Suite)
- Fan
- Balcony
- Tea/coffee making facilities (except Shearwater Bunk Room)
- Refrigerator (except Shearwater Bunk Room)

#### Room serviced daily

Check-in 1pm Check-out 10am

Map page 13 Ref. 14

#### HOW TO GET THERE:

From Bundaberg or Hervey Bay – 30 minutes or 40 minutes respectively by air. A baggage limit of 10kg per person applies.

<b>PRICE:</b>	<b>RETURN</b>
Adult	\$259
Child 3-12 years	\$139

Transfers must be booked in conjunction with accommodation.

#### ROOM, BREAKFAST AND DINNER

	ADULTS	1 NT	2 NTS	5 NTS
1 – 21 APR, 26 APR – 15 DEC 11, 16 JAN – 31 MAR 12 <sup>^</sup>				
Eco Cabin	2	316	632	1264
Shearwater Bunk Room	2	374	748	1496
Garden Unit	2	442	884	1768
Reef Unit	2	514	1028	2056
2 Bedroom Island Suite	2	N/A	1264	2528
22 – 25 APR, 16 DEC 11 – 15 JAN 12				
Eco Cabin	2	352	704	1760
Shearwater Bunk Room	2	402	804	2010
Garden Unit	2	456	912	2280
Reef Unit	2	552	1104	2760
2 Bedroom Island Suite	2	N/A	1344	3360

3 night minimum stay applies 20 Dec 11 – 5 Jan 12.

<b>Includes</b>	Buffet breakfast and dinner daily. Glass bottom boat and snorkelling tour per person. Environmental Management Charge.
-----------------	--

<b>Children</b>	0 to 2 years – cot/bed charge payable direct. 3 to 12 years – \$59 per child per night, valid 1 – 21 Apr, 26 Apr – 15 Dec 11, 16 Jan – 31 Mar 12. \$69 per child per night, valid 22 – 25 Apr, 16 Dec 11 – 15 Jan 12.
-----------------	---

<b>Max capacity</b>	Eco Cabin/Garden Unit/Reef Unit/2 Bedroom Island Suite – 4, Shearwater Bunk Room – 6. <b>LADLYT</b>
---------------------	---

#### REEF AND RAINFOREST

##### INCLUDES:

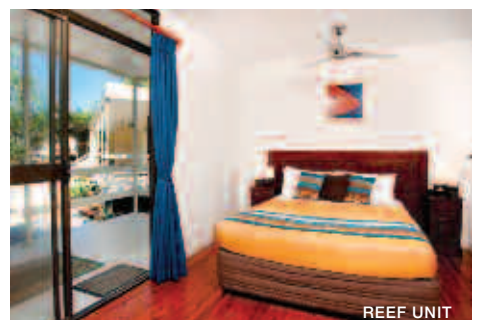
- 2 nights accommodation at Lady Elliot Island Eco Resort including buffet breakfast and dinner daily
- Glass bottom boat and snorkelling tour per person
- Environmental Management Charge
- Return air transfers from Hervey Bay to Lady Elliot Island
- 2 nights accommodation at Kingfisher Bay Resort, Fraser Island including buffet breakfast daily
- Ranger guided Fraser Island Beauty Spots Tour
- Return coach and ferry transfers from Hervey Bay to Fraser Island

<b>PRICE PER PERSON</b>	<b>ADULTS</b>	<b>4 NTS</b>
-------------------------	---------------	--------------

1 – 21 APR, 26 APR – 15 DEC 11, 16 JAN – 31 MAR 12	2	1172
Reef Unit/Resort Hotel		
Child prices on application. Refer to page 39 for further details on Kingfisher Bay Resort.		

#### SUNLOVER BONUS

<sup>^</sup> FREE Night Offer: Stay 5 nights, pay for 4 or stay 7 nights, pay for 5. (5 night price includes 1 free night)



REEF UNIT

## Kingfisher Bay Resort ★★★★★

From **\$213** PER ROOM PER NIGHT\*



LAKE MCKENZIE



### Fraser Island, via Hervey Bay



Kingfisher Bay Resort is the gateway to the World Heritage wilderness of Fraser Island, its ancient rainforests, spectacular fresh-water lakes and famous 75 Mile Beach.

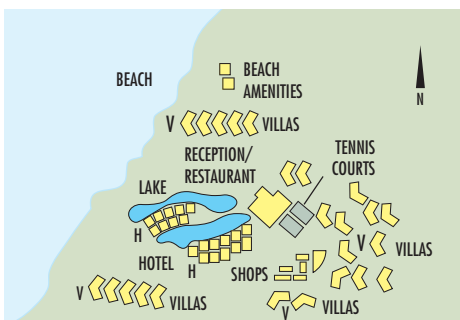
Kingfisher Rangers conduct four wheel drive tours, nature walks and activities such as birdwatching, stargazing and fishing clinics. There are also seasonal dolphin search and whale watch cruises.

The resort rests among tree-covered dunes on the edge of the calm waters of the Great Sandy Strait – a paradise for boating, fishing, swimming, bush walking and four wheel driving. Ideal for a fun family holiday or a relaxing getaway.

### PROPERTY FEATURES:

- Restaurants (3) ■ Café
- Bars (6) ■ General store
- Pools (4) ■ Spa
- Massage and beauty therapy
- Tennis court
- Children's playground
- Guest laundry
- Kids Junior Eco Ranger program (4-14 years) operating weekends and school holidays (extra charge)
- Child minding available (extra charge)

### ACCOMMODATION: H. HOTEL, V. VILLA



### COMPLIMENTARY ACTIVITIES INCLUDE:

- Beach volleyball
- Selected nature walks
- Bushtucker walks

### ACTIVITIES AVAILABLE AT AN EXTRA CHARGE:

- 4WD ranger-guided eco tours
- Whale watching (Aug – Oct)
- Canoeing
- 4WD hire ■ Tennis
- Spa treatments and massage
- Nature walks ■ Fishing
- Watersports

Book your Fraser Island 4WD and whale watching tours before you travel. Ask your travel agent for details.

### ACCOMMODATION FEATURES:

- Air-conditioning (Hotel rooms)
- Balcony ■ Kitchen (Villas)
- Refrigerator
- Tea/coffee making facilities
- Television ■ Telephone
- Laundry (Villas)
- Ironing facilities ■ Hair dryer

Hotel Room serviced daily

Villa serviced every 3 days

Check-in 2pm Check-out 10am

Map page 13 Ref. 15

### FRASER ALL OVER PACKAGE

#### INCLUDES:

- 3 nights accommodation ■ Full buffet breakfast daily
- Return coach transfers from Fraser Coast Airport, Hervey Bay
- Return ferry transfers from River Heads
- Full day Beauty Spots tour ■ Full day Champagne Pool tour

PRICE PER PERSON ADULTS 3 NTS EXTRA NTS

	ADULTS	3 NTS	EXTRA NTS
1 APR 11 – 31 MAR 12			
Resort Hotel	2	659	120
Hotel Spa	2	734	145

Child prices on application. Other room types also available.

### HOW TO GET THERE:

From Brisbane Airport – 4 hours 15 minutes by coach to River Heads, Hervey Bay and 50 minutes by ferry.

PRICE:	COACH ONE WAY	FERRY ONE WAY
Adult	\$85	\$25
Child 4-14 years	\$85	\$13

From Fraser Coast Airport – 20 minutes by coach to River Heads, Hervey Bay and 50 minutes by ferry.

PRICE:	COACH ONE WAY	FERRY ONE WAY
Adult	\$7	\$25
Child 4-14 years	\$4	\$13

Transfers must be booked in conjunction with accommodation. 4WD vehicular barge transfers also available.

### ROOM ONLY

	ADULTS	1 NT	2 NTS	5 NTS
1 – 21 APR, 26 APR – 22 DEC 11, 9 JAN – 31 MAR 12				
Resort Hotel	1 to 3	213	426	1065
Bay View Hotel	1 to 3	263	526	1315
Hotel Spa	1 to 3	263	526	1315
Bay View Spa Hotel	1 to 3	288	576	1440
2 Bedroom Villa	1 to 4	N/A	570	1425
2 Bedroom Spa Villa	1 to 4	N/A	670	1675
2 Bedroom Loft Villa	1 to 6	N/A	712	1780
3 Bedroom Spa Villa	1 to 6	N/A	812	2030
3 Bedroom Executive Villa	1 to 6	N/A	842	2105
22 – 25 APR, 23 DEC 11 – 8 JAN 12				
Resort Hotel	1 to 3	639	1065	1491
Bay View Hotel	1 to 3	789	1315	1841
Hotel Spa	1 to 3	789	1315	1841
Bay View Spa Hotel	1 to 3	864	1440	2016
2 Bedroom Villa	1 to 4	1131	1885	2639
2 Bedroom Spa Villa	1 to 4	1281	2135	2989
2 Bedroom Loft Villa	1 to 6	1416	2360	3304
3 Bedroom Spa Villa	1 to 6	1566	2610	3654
3 Bedroom Executive Villa	1 to 6	1611	2685	3759

**Children** 0 to 14 years – free when sharing with an adult and using existing bedding.

**Max capacity** Hotel Rooms – 3, 2 Bedroom Villa/2 Bedroom Spa Villa – 4, 2 Bedroom Loft Villa/3 Bedrooms – 6.

KINFRI

# Southern Queensland Islands

## Tangalooma Island Resort ★★☆☆



### Moreton Island, via Brisbane



With over 80 tours and activities only a 75 minute cruise from Brisbane, the hardest decision will be how long to stay at Tangalooma Island Resort. Surrounded by pristine waters and untouched national parks, the resort is the perfect destination for your next escape.

A highlight of any stay is the opportunity to interact closely with nature. Each evening wild bottlenose dolphins eagerly swim up to the beach to be hand fed fresh fish by resort guests, an unforgettable experience. This is in addition to the many other Eco based nature experiences such as the Marine Discovery cruise and Whale Watching cruises that the island resort offers.

Stay within 50 metres of the beach amidst landscaped gardens and natural bushland with a range of accommodation to suit every style and budget.

Tangalooma's wide range of resort facilities caters for everyone, from families and couples, to those seeking action or a nature based experience in a truly relaxing environment.

**ACCOMMODATION:** H. HOTEL/HOTEL DELUXE ROOMS, R. RESORT UNIT/SUITE, V. 2 BEDROOM VILLA, D. DEEP BLUE APARTMENTS,

### PROPERTY FEATURES:

- Restaurants (2) ▪ Café
- Room service (limited) ▪ Bistro
- Bars (3) ▪ Evening entertainment
- Pools (3) ▪ Tennis court
- Tanga Tours Active Kidz Club (8-14 years) operating year round (extra charge)

### COMPLIMENTARY ACTIVITIES INCLUDE:

- Dolphin feeding program (conditions apply)
- Tennis ▪ Beach volleyball
- Archery ▪ Basketball ▪ Table tennis
- Croquet ▪ Eco walks ▪ Squash
- Golf driving net and putting green
- Marine Education and Conservation Centre

### ACTIVITIES AVAILABLE AT AN EXTRA CHARGE:

- Whale Watching (Jun-Oct) ▪ Marine Discovery cruise
- Fishing ▪ 4WD tour ▪ ATV Quad Bike tour
- Desert Safari tour (including sand tobogganing)
- Kayaking
- Snorkelling equipment and tours ▪ Jet ski tour
- Helicopter flights
- Parasailing ▪ Catamarans
- Island tour ▪ Dinghy hire

Book your Marine Discovery Cruise, Whale Watching Cruise, Desert Safari tour and ATV Quad Bike tour before you travel. Ask your travel agent for details.

### ACCOMMODATION FEATURES:

- Air-conditioning (except Villas) ▪ Fan (Villas)
- Balcony or patio (except Resort Units and Resort Suites)
- Kitchen with microwave (Villas and Deep Blue Apts)
- Limited cooking facilities (Resort Units & Resort Suites)
- Television ▪ Telephone
- Washing machine (Villas and Deep Blue Apartments)

### Room serviced daily

Check-in 12:30pm Check-out 10am

Map page 13 Ref. 16

Deep Blue Apartments ★★☆☆☆

### HOW TO GET THERE:

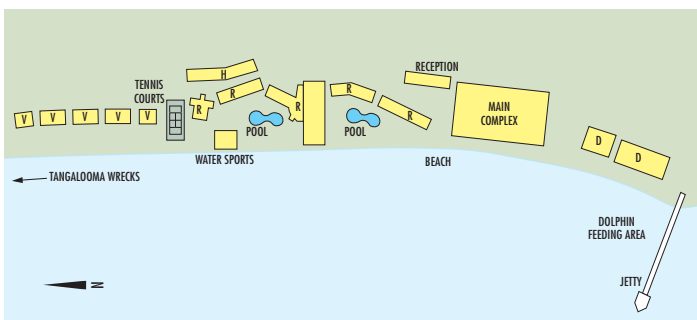
From Brisbane Transit Centre, selected Brisbane hotels and Brisbane Airport to Holt St Wharf – 15 minutes by coach from Transit Centre or Airport. 90 minutes from selected Brisbane hotels.

PRICE:	RETURN
Adult	\$40
Child 3-14 years	\$20

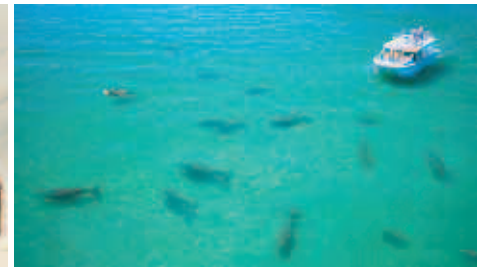
From Holt St Wharf, Pinkenba, Brisbane – 75 minutes by launch.

PRICE:	RETURN
Adult	\$75
Child 3-14 years	\$40

Transfers must be booked in conjunction with accommodation.



From **\$147** PER ROOM PER NIGHT\*



## WILD DOLPHIN PACKAGE

### INCLUDES:

- 1 nights accommodation
- Full buffet breakfast daily
- Wild dolphin feeding on one night
- Return launch transfers from Holt Street Wharf
- Daily maid service
- 12:30pm check-in
- FREE Night Offer: Stay 7 nights, pay for 6
- DOLPHIN GETAWAY ESCAPE FREE NIGHT OFFER:  
Stay 3 nights, pay for 2, valid 1 Jun – 31 Aug 11

PRICE PER PERSON	ADULTS	1 NT	EXTRA NTS
------------------	--------	------	-----------

1 – 21 APR, 26 – 30 APR, 1 JUN – 24 DEC 11, 2 JAN – 31 MAR 12			
Hotel Room	2	225	150
Resort Unit	2	240	165
Resort Suite	2	250	175
Hotel Deluxe Room	2	265	190
1 – 31 MAY 11			
Hotel Room	2	148	73
Resort Unit	2	163	88
Resort Suite	2	173	98
Hotel Deluxe Room	2	188	113

Child prices on application. Other prices apply 22 – 25 Apr, 25 Dec 11 – 1 Jan 12. 2 Bedroom Villa and Deep Blue 2, 3 and 4 Bedroom Apartment prices also available.

## DOLPHIN GETAWAY

### INCLUDES:

- 2 nights accommodation
- Full buffet breakfast daily
- Wild dolphin feeding on one night
- Return launch transfers from Holt Street Wharf
- 3pm check-in

PRICE PER PERSON	ADULTS	2 NTS	EXTRA NTS
------------------	--------	-------	-----------

1 – 21 APR 11, 26 APR – 31 MAR 12			
Hotel Room	2	310	118
Resort Unit	2	340	133
Resort Suite	2	360	143
Hotel Deluxe Room	2	390	158
2 Bedroom Villa	2	410	168

No daily maid service. Child prices on application. Other prices apply 22 – 25 Apr 11. Deep Blue 2, 3 and 4 Bedroom Apartment prices also available.

## ROOM ONLY

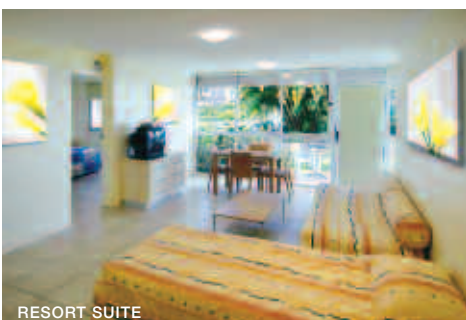
	ADULTS	1 NT	2 NTS	4 NTS
1 – 21 APR 11, 26 APR – 31 MAR 12				
Hotel Room	2	310	620	1240
Resort Unit	2	340	680	1360
Resort Suite	2	360	720	1440
Hotel Deluxe Room	2	390	780	1560
2 Bedroom Villa	2	400	800	1600
Deep Blue 2 Bedroom Apartment	2	N/A	1240	2480
Deep Blue 3 Bedroom Apartment	2	N/A	1440	2880
Deep Blue 4 Bedroom Apartment	2	N/A	1640	3280
122 – 25 APR 11				
Hotel Room	2	700	1400	2100
Resort Unit	2	800	1600	2400
Resort Suite	2	840	1680	2520
Hotel Deluxe Room	2	900	1800	2700
2 Bedroom Villa	2	1000	2000	3000
Deep Blue 2 Bedroom Apartment	2	N/A	3080	4620
Deep Blue 3 Bedroom Apartment	2	N/A	3480	5220
Deep Blue 4 Bedroom Apartment	2	N/A	3880	5820

2 night minimum stay applies 25 Dec 11 – 1 Jan 12. Extra person charge: \$30 per person per night.

**Includes** Wild dolphin feeding on one night. Hotel Deluxe Rooms include guaranteed top floor, use of bathrobes and slippers, a bottle of wine and chocolates in room on arrival.

**Children** 0 to 2 years – cot free of charge. 3 to 14 years – adult prices apply.

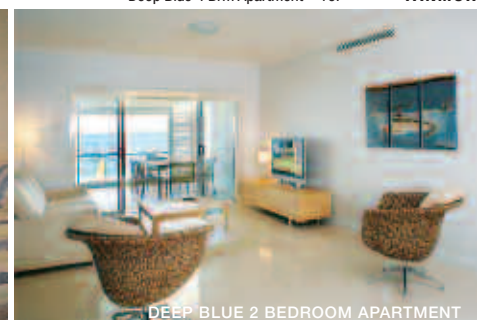
**Max capacity** Hotel Room/Resort Unit/Hotel Deluxe Room – 4, Resort Suite – 5, 2 Brm Villa – 7 adults/1 child, Deep Blue 2 Brm Apartment – 6, Deep Blue 3 Brm Apartment/Deep Blue 4 Brm Apartment – 10. **TANMOR**



RESORT SUITE



HOTEL DELUXE ROOM



DEEP BLUE 2 BEDROOM APARTMENT