

# Launceston, Tamar and the North



Launceston

Choosing a base in the centre of northern Tasmania is simple: it has to be Launceston. Here you can eat, drink and be merry. This is a city that prides itself on its artisans, who include chefs, wine makers, farmers and fishermen who all share a passion for local produce.

Let's start with Launceston's most fantastic attraction just 10 minutes from the city centre, Cataract Gorge. Explore rock-walled walking trails and marvel at the South Esk River travelling through the gorge.

Launceston's where all the goodies grown and made in the region come together for you to enjoy in restaurants, delis and cafés. Then again, if you prefer to get your gourmet fare direct from the source, that's easy to arrange. Travel the Tamar Valley Wine Route through fields of lavender, strawberries and grapes. Mole Creek's wildlife park is great fun, and it's also on the food and wine trail, just like Westbury's village green.

King Solomon and Marakooa Caves, both near the town of Mole Creek, showcase glow worms that twinkle to the delight of visitors and highlight the incredible caves in which they live.

Travel north for 15 minutes and you'll find Hollybank Treetops Adventure. As Tasmania's newest tourism venture, this nature experience allows visitors to glide across the treetops for a unique view of the forest.

Golfers who fancy a challenge can get swept away with the 18 hole championship golf course at Barnbougle Dunes, just north of Launceston at Bridport. Lauded as one of the country's great golf courses, its links course is sculpted from sand dunes.

## Our Favourites

Get up close to a Tasmanian devil at Trowunna Wildlife Park

Tee off at Barnbougle Dunes – Australia's number one public golf course

Explore Australia's biggest working craft fair at Deloraine in November

Taste some of the world's finest sparkling wines along the Tamar Valley Wine Route



## FIND YOUR ACCOMMODATION

### LAUNCESTON

REF.	APARTMENTS	PAGE
2	Alanvale Apartment & Motor Inn ★★★☆	31
15	Alice's Cottages & Spa Hideaways ★★★★★	32
11	Apartments at York Mansions ★★★★★	32
17	Country Club Villas ★★★★★	35
7	Elphin Villas ★★★☆	31
6	The Lido Boutique Apartments ★★★★★	31
4	Quest Launceston ★★★★★	34
3	The Sebel Launceston ★★★★★	34
9	Strathesk House ◆◆◆◆◆	35

REF.	HOTELS	PAGE
13	Ashton Gate Guest House ★★★★★	32
12	Balmoral on York ★★★★★	33
16	Country Club Tasmania ★★★★★	35
14	Hotel Charles ◆◆◆◆◆	33
5	Hotel Grand Chancellor ★★★★★	33
18	Leisure Inn Penny Royal ◆◆◆◆◆	31
10	Mercure Launceston ★★★★★	34
1	Peppers Seaport Hotel ★★★★★	34
8	Sandors on the Park ★★★☆	32

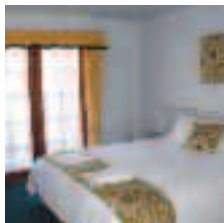
### BEYOND LAUNCESTON

Refer to map on page 7

REF.	APARTMENTS	PAGE
10	Aspect Tamar Valley Resort ◆◆◆◆◆	35
11	Rosevears Vineyard Retreat ★★★★★	36
12	Peppers York Cove ◆◆◆◆◆	36
15	Barnbougle Dunes Golf Links ◆◆◆◆◆	36

REF.	HOTELS	PAGE
13	Quamby Estate ◆◆◆◆◆	37
14	Peppers Calstock ◆◆◆◆◆	37

**Alanvale Apartments & Motor Inn** ★★★☆



Apartment and motel accommodation set in traditional Tudor Village style. Enjoy the tranquil surroundings complete with village green.

City Centre 4km  
Map page 30 Ref. 2

15-17 Alanvale Road, Newnham

**PROPERTY FEATURES:**

- Bistro
- Bar
- Parking

**ACCOMMODATION FEATURES:**

- Balcony or patio
- Kitchen (Apartments only)
- Tea/coffee making facilities
- Internet access (wireless)
- Washer/dryer (Apartments only)
- All rooms non smoking

Room serviced daily  
Apartment serviced weekly



From \$90 PER ROOM PER NIGHT*				
1 OCT 10 – 31 MAR 11	ADULTS	1 NT	5 NTS	7 NTS
Motel	1 to 2	104	520	624
Standard 1 Bedroom	1 to 2	128	640	768
Standard 2 Bedroom	1 to 4	160	800	960
1 APR 11 – 31 MAR 12	ADULTS	1 NT	5 NTS	7 NTS
Motel	1 to 2	106	530	636
Standard 1 Bedroom	1 to 2	130	650	780
Standard 2 Bedroom	1 to 4	162	810	972

Superior 1 Bedroom and Superior 2 Bedroom prices also available.

**Children** 0 to 2 years – cot free of charge.  
3 to 14 years – adult prices apply.

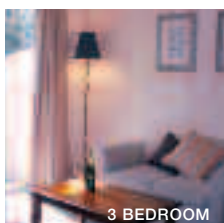
**Max capacity** Motel/Standard 1 Bedroom – 3,  
Standard 2 Bedroom – 5.

**ALALST**

**TRAVELPOINT BONUS**

FREE Night Offer: Stay 7 nights, pay for 6.  
(7 night price includes 1 free night)

**Elphin Villas** ★★★☆



A touch of Tuscany in the leafy heart of Launceston, nestled amongst beautiful terraced gardens.

City Centre 1km  
Map page 30 Ref. 7

29A Elphin Road, Launceston

**PROPERTY FEATURES:**

- Barbecue area
- Guest laundry
- Parking

**ACCOMMODATION FEATURES:**

- Heating
- Limited cooking facilities (Studio rooms only)
- Kitchen (Villas only)
- Tea/coffee making facilities
- Internet access (broadband)
- All rooms non smoking

Room serviced daily (except Sunday and public holidays)



From \$140 PER ROOM PER NIGHT*				
1 OCT 10 – 30 APR 11	ADULTS	1 NT	3 NTS	5 NTS
Motel	1 to 2	140	420	700
1 Bedroom Studio	1 to 2	155	465	775
3 Bedroom Villa	1 to 2	220	660	1100
3 Bedroom Spa Villa	1 to 2	240	720	1200
1 MAY – 30 SEP 11	ADULTS	1 NT	3 NTS	5 NTS
Motel	1 to 2	140	420	700
1 Bedroom Studio	1 to 2	160	480	800
3 Bedroom Villa	1 to 2	215	645	1075
3 Bedroom Spa Villa	1 to 2	235	705	1175
1 OCT 11 – 31 MAR 12	ADULTS	1 NT	3 NTS	5 NTS
Motel	1 to 2	145	435	725
1 Bedroom Studio	1 to 2	165	495	825
3 Bedroom Villa	1 to 2	220	660	1100
3 Bedroom Spa Villa	1 to 2	240	720	1200

2 Bedroom Unit prices also available.

**Children** 0 to 2 years – cot charge payable direct.  
3 to 14 years – adult prices apply.

**Max capacity** Motel/1 Bedroom Studio – 2, 3 Bedroom Villa/  
3 Bedroom Spa Villa – 6.

**ELPLST**

**Leisure Inn Penny Royal** ◆◆◆◆



A boutique heritage property set adjacent to Cataract Gorge and the ideal place from which to explore northern Tasmania.

City Centre 500m  
Map page 30 Ref. 18

147 Paterson Street, Launceston

**PROPERTY FEATURES:**

- Room service (limited)
- Dry cleaning service
- Guest laundry
- Parking

**ACCOMMODATION FEATURES:**

- Heating
- Limited cooking facilities (2 Bedrooms)
- Tea/coffee making facilities
- Internet access (broadband)
- Ironing facilities
- Hair dryer

Room serviced daily

From \$137 PER ROOM PER NIGHT*				
1 OCT 10 – 30 APR, 1 OCT 11 – 31 MAR 12	ADULTS	1 NT	3 NTS	5 NTS
Hotel	1 to 2	161	483	805
2 Bedroom	1 to 2	199	597	995
1 – 27 MAY, 31 MAY – 30 SEP 11	ADULTS	1 NT	3 NTS	5 NTS
Hotel	1 to 2	137	411	685
2 Bedroom	1 to 2	171	513	855

Other prices apply 28 – 30 May 11. Room and breakfast prices also available.

**Children** 0 to 2 years – cot/bed charge payable direct.  
3 to 12 years – up to 2 children free when sharing with 2 adults and using existing bedding.

**Max capacity** Hotel – 3, 2 Bedroom – 4.

**LIIPLST**

**The Lido Boutique Apartments** ★★★☆



Spacious apartments reflect the style of the 1930s. Enjoy friendly service, a high standard of accommodation and attention to detail.

City Centre 1.4km  
Map page 30 Ref. 6

47-49 Elphin Road, Launceston

**PROPERTY FEATURES:**

- DVD library
- Parking

**ACCOMMODATION FEATURES:**

- Air-conditioning
- Balcony or patio
- Heating
- CD/DVD player
- Kitchen with microwave and dishwasher
- In-room movies (free)
- Internet access (broadband)
- Hair dryer
- Washer/dryer
- Ironing facilities
- 2 bathrooms in 2 and 3 Bedrooms
- Bath robes
- All rooms non smoking

Apartment serviced daily Monday to Friday.  
Limited service Sat, Sun and public holidays.



From \$200 PER ROOM PER NIGHT*				
1 OCT 10 – 31 MAR 11	ADULTS	1 NT	3 NTS	5 NTS
1 Bedroom Deluxe	1 to 2	200	600	1000
2 Bedroom Superior	4	322	966	1610
1 – 30 APR 11, 1 SEP – 31 MAR 12	ADULTS	1 NT	3 NTS	5 NTS
1 Bedroom Deluxe	1 to 2	200	600	1000
2 Bedroom Superior	4	330	990	1650
1 MAY – 31 AUG 11	ADULTS	1 NT	3 NTS	5 NTS
1 Bedroom Deluxe	1 to 2	160	480	800
2 Bedroom Superior	4	276	828	1380

2 night minimum stay applies 20 Dec 10 – 30 Jan 11, 20 DEC 11 – 20 Jan 12 and over AFL Football weekends. Other room types also available.

**Includes** Light breakfast on the first morning.

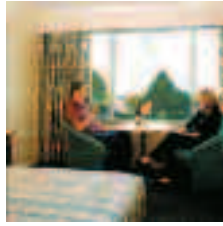
**Children** 0 to 3 years – cot/bed charge payable direct.  
4 to 14 years – adult prices apply.

**Max capacity** 1 Bedroom Deluxe – 3, 2 Bedroom Superior – 4,  
3 Bedroom Superior – 6.

**LIDLST**

# Launceston

## Sandors on the Park ★★★☆



Hotel accommodation overlooking spectacular City Park, close to local attractions and within easy walking distance of the CBD.

City Centre 500m  
Map page 30 Ref. 8

3 Brisbane Street, Launceston

### PROPERTY FEATURES:

- Café
- Room service (limited)
- Laundry/dry cleaning service
- Parking (off-street)

### ACCOMMODATION FEATURES:

- Air-conditioning
- Tea/coffee making facilities
- Mini bar
- Cable TV
- Internet access (wireless)
- Hair dryer
- Ironing facilities

Room serviced daily

From **\$150** PER ROOM PER NIGHT\*

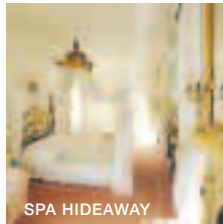
Period	ADULTS	1 NT	3 NTS	5 NTS
1 OCT 10 – 30 APR 11				
Standard/Family	1 to 2	155	465	775
1 MAY – 30 SEP 11				
Standard/Family	1 to 2	150	450	750
1 OCT 11 – 31 MAR 12				
Standard/Family	1 to 2	158	474	790

**Children** 0 to 2 years – cot free of charge.  
3 to 14 years – \$20 per child per night.

**Max capacity** Standard – 2, Family – 4.

**SANLST**

## Alice's Cottages and Spa Hideaways ★★★



SPA HIDEAWAY

A romantic retreat tucked away in the historic heart of Launceston. Each self contained cottage has its own secret romantic theme.

City Centre 1km  
Map page 30 Ref. 15

129 Balfour Street, Launceston

### PROPERTY FEATURES:

- Barbecue area
- Guest laundry
- Parking
- Non smoking

### ACCOMMODATION FEATURES:

- Air-conditioning
- Fireplace
- Mini bar
- Kitchen (except Spa Hideaway)
- Limited cooking facilities with microwave (Spa Hideaway only)
- Tea/coffee making facilities
- Ironing facilities
- Laundry
- Hair dryer
- All rooms non smoking

Cottage serviced every 2 days

From **\$170** PER ROOM PER NIGHT\*

Period	ADULTS	1 NT	2 NTS	3 NTS
1 OCT 10 – 31 MAR 12				
Shambles Cottage	2	170	340	510
Spa Hideaway	2	206	412	618
Aphrodite's Villa	2	N/A	460	690

Sole use prices also available.

**Includes** Light breakfast daily.  
Complimentary port, chocolates and shortbread on arrival.

**Children** 0 to 14 years – not catered for.

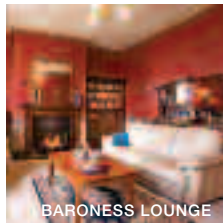
**Max capacity** Shambles Cottage/Spa Hideaway – 2,  
Aphrodite's Villa – 4.

**ACSLST**

### TRAVELPOINT EXCLUSIVE

FREE use of the open wood fire when staying in the Cottages, valid 1 Jul – 31 Oct 11.

## Apartments at York Mansions ★★★



BARONESS LOUNGE

Within the original walls of the National Trust classified York Mansions, built in 1840, are spacious apartments furnished with authentic period décor.

City Centre 500m  
Map page 30 Ref. 11

9-11 York Street, Launceston

### PROPERTY FEATURES:

- Fireplace
- DVD library
- Internet access (wireless)
- Barbecue
- Guest laundry
- Parking

### ACCOMMODATION FEATURES:

- Balcony (except Gamekeeper and Lodge)
- Fireplace
- Heating
- Ironing facilities
- Kitchen with microwave
- Mini bar
- Electric blankets
- CD/DVD player
- Internet access (wireless)
- Spa bath (except Baroness and Lodge)
- Bath robes
- Hair dryer
- Washer/dryer
- All rooms non smoking

Apartment serviced every 2 days

From **\$220** PER ROOM PER NIGHT\*

Period	ADULTS	1 NT	3 NTS	5 NTS
1 OCT 10 – 31 MAR 11				
Baroness/Lodge	1 to 2	236	708	1180
Gamekeeper/Countess	1 to 2	250	750	1250
Duchess of York	1 to 2	260	780	1300
1 APR – 31 AUG 11				
Baroness/Lodge	1 to 2	220	660	1100
Gamekeeper/Countess	1 to 2	234	702	1170
Duchess of York	1 to 2	248	744	1240
1 SEP 11 – 31 MAR 12				
Baroness/Lodge	1 to 2	228	684	1140
Gamekeeper/Countess	1 to 2	246	738	1230
Duchess of York	1 to 2	258	774	1290

**Children** 0 to 7 years – not catered for.  
8 to 14 years – adult prices apply.

**Max capacity** 4.

**YORLST**

## Ashton Gate Guest House ★★★



DELUXE DOUBLE

A beautifully restored Heritage Listed Victorian home, located just a short stroll from the city centre.

City Centre 500m  
Map page 30 Ref. 13

32 High Street, East Launceston

### PROPERTY FEATURES:

- Bar
- Guest lounge
- Sundeck
- Parking

### ACCOMMODATION FEATURES:

- Air-conditioning
- Kitchen with microwave (Cottage)
- Tea/coffee making facilities
- Refrigerator
- Ironing facilities
- Hair dryer
- All rooms non smoking

Room serviced daily

From **\$150** PER ROOM PER NIGHT\*

Period	ADULTS	1 NT	2 NTS	5 NTS
1 OCT 10 – 31 MAR 11				
Standard	2	150	300	750
Deluxe Double	2	160	320	800
Spa Suite/Self Contained Cottage	2	200	400	1000
1 APR 11 – 31 MAR 12				
Standard	2	155	310	775
Deluxe Double	2	175	350	875
Spa Suite/Self Contained Cottage	2	N/A	390	975

Sole use prices also available.

**Includes** Full breakfast daily.

**Children** 0 to 15 years – \$15 per child per night.

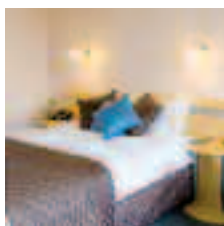
**Max capacity** Standard/Deluxe – 2, Spa Suite – 3, Cottage – 4.

**ASHLST**

### TRAVELPOINT EXCLUSIVE

FREE upgrade to a Deluxe Room with a bottle of Tasmanian wine on arrival for stays of 3 nights or more, valid 1 Jun – 31 Aug 11.

**Balmoral on York ★★★★★**



Spacious and comfortable hotel rooms centrally located to Launceston's parks, cafés and restaurants.

City Centre 800m  
Map page 30 Ref. 12

19 York Street, Launceston

**PROPERTY FEATURES:**

- Restaurant ▪ Café ▪ Bar
- Room service (limited)
- Internet access (wireless)
- Guest laundry ▪ Parking (free)

**ACCOMMODATION FEATURES:**

- Air-conditioning ▪ Mini bar
- Tea and coffee making facilities
- Cable TV ▪ In-room movies (free)
- Internet access (wireless)
- Ironing facilities ▪ Hair dryer
- All rooms non smoking

Room serviced daily



From **\$128** PER ROOM PER NIGHT\*

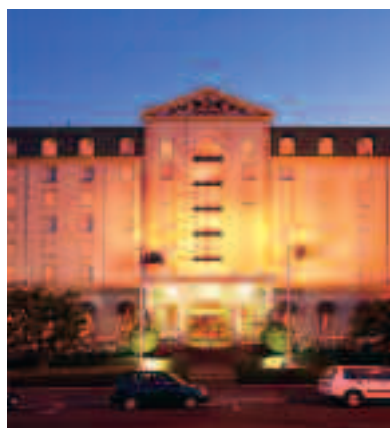
1 OCT 10 – 31 MAY 11 <sup>^</sup>	ADULTS	1 NT	3 NTS	5 NTS
Residential View Standard	1 to 2	140	420	700
City View Premier	1 to 2	160	480	800
Studio Balcony	1 to 2	175	525	875
1 JUN – 30 SEP 11+ <sup>+</sup>	ADULTS	1 NT	3 NTS	5 NTS
Residential View Standard	1 to 2	128	384	640
City View Premier	1 to 2	140	420	700
Studio Balcony	1 to 2	150	450	750
1 OCT 11 – 31 MAR 12+ <sup>+</sup>	ADULTS	1 NT	3 NTS	5 NTS
Residential View Standard	1 to 2	150	450	750
City View Premier	1 to 2	175	525	875
Studio Balcony	1 to 2	190	570	950

**Includes** ▲ Light breakfast daily.  
✦ Full breakfast daily.

**Children** 0 to 2 years – cot/bed charge payable direct.  
3 to 14 years – \$20 per child per night, room only.

**Max capacity** City View Premier/Studio Balcony – 2,  
Residential View Standard – 3. **BOYLST**

**Hotel Grand Chancellor Launceston ★★★★★☆**



Centrally located in the heart of Launceston with City Park, Cataract Gorge and the Old Seaport Marina all within walking distance.

City Centre 500m  
Map page 30 Ref. 5

29 Cameron Street, Launceston

**PROPERTY FEATURES:**

- 24 hour reception
- Restaurant ▪ Bar
- Room service (24 hour)
- Guest laundry

**ACCOMMODATION FEATURES:**

- Air-conditioning
- Tea/coffee making facilities
- Mini bar
- In-room movies (pay to view)
- Internet access (broadband)
- Ironing facilities ▪ Hair dryer

Room serviced daily



From **\$157** PER ROOM PER NIGHT\*

1 OCT – 11 NOV, 15 NOV 10 – 21 FEB, 25 FEB – 31 MAR 11	ADULTS	1 NT	2 NTS	5 NTS
Deluxe	1 to 2	220	440	1100
Superior	1 to 2	287	574	1435
1 APR – 4 MAY, 8 MAY – 30 SEP 11 <sup>^</sup>	ADULTS	1 NT	2 NTS	5 NTS
Deluxe	1 to 2	157	314	785
Superior	1 to 2	200	400	1000
1 OCT – 10 NOV, 14 NOV 11 – 21 FEB, 25 FEB – 31 MAR 12	ADULTS	1 NT	2 NTS	5 NTS
Deluxe	1 to 2	179	358	895
Superior	1 to 2	221	442	1105

Other prices apply 12 – 14 Nov 10, 22 – 24 Feb 11, 5 – 7 May, 11 – 13 Nov 11, 22 – 24 Feb 12. Room and breakfast prices also available.  
**Children** 0 to 12 years – free when sharing with an adult and using existing bedding. Cot free of charge.  
**Max capacity** Deluxe – 3 adults or 2 adults/2 children,  
Superior – 2 adults/1 child. **HGCLST**

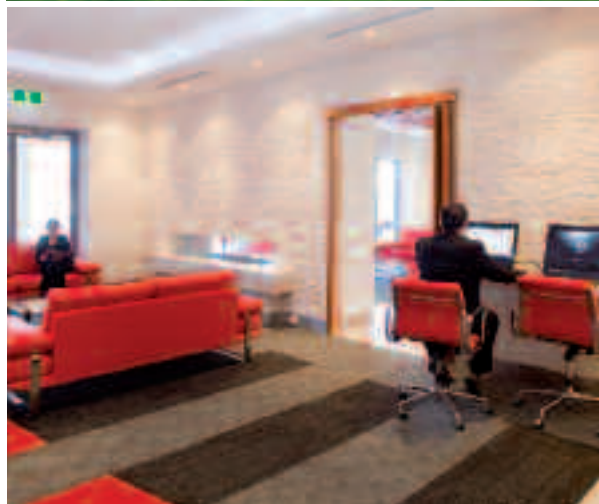
**TRAVELPOINT BONUS**

▲ FREE breakfast daily for stays of 2 nights or more.

**Hotel Charles ◆◆◆◆◆**



ARTIST'S IMPRESSION



287 Charles Street, Launceston

Hotel Charles is located on the fringe of Launceston's business district with stunning views over the city to the Tamar River Valley. The hotel offers a choice of modern hotel or apartment style accommodation.

With an emphasis on privacy, charm and attention to detail, the hotel features an extensive range of facilities including Restaurant ESCA, private dining room, guest and business lounge and an internet kiosk.

**PROPERTY FEATURES:**

- 24 hour reception
- Restaurant
- Guest lounge
- Room service (24 hour)
- Guest laundry
- Dry cleaning service
- Business services
- Internet facilities
- Parking

**ACCOMMODATION FEATURES:**

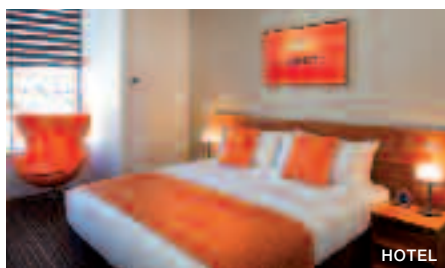
- Air-conditioning
- Mini bar
- Tea/coffee making facilities
- In-room movies (free)
- Internet access (broadband)
- Ironing facilities
- Hair dryer

Room serviced daily

City Centre 1km  
Map page 30 Ref. 14



From **\$180** PER ROOM PER NIGHT\*



HOTEL



1 BEDROOM SPA

1 OCT 10 – 31 MAR 11	ADULTS	1 NT	3 NTS	5 NTS
Hotel King	1 to 2	180	540	900
Hotel King Studio	1 to 2	200	600	1000
1 Bedroom Spa	1 to 2	350	1050	1750
1 APR – 30 SEP 11	ADULTS	1 NT	3 NTS	5 NTS
Hotel King	1 to 2	220	660	1100
Hotel King Studio	1 to 2	240	720	1200
1 Bedroom Spa	1 to 2	380	1140	1900
1 OCT – 31 MAR 12	ADULTS	1 NT	3 NTS	5 NTS
Hotel King	1 to 2	240	720	1200
Hotel King Studio	1 to 2	260	780	1300
1 Bedroom Spa	1 to 2	400	1200	2000

Other room types also available.  
**Children** 0 to 2 years – cot/bed charge payable direct.  
3 to 14 years – adult prices apply.

**Max capacity** Hotel King/Hotel King Studio – 2,  
1 Bedroom Spa – 3. **CHALST**

# Launceston

## Mercure Launceston ★★★★★



Conveniently located in the city centre, 15 minutes drive from the airport and two minutes walk from the main shopping precinct.

City Centre 200m  
Map page 30 Ref. 10

3 Earl Street, Launceston

### PROPERTY FEATURES:

- 24 hour reception
- Restaurant
- Bar
- Room service (24 hour)
- Parking

### ACCOMMODATION FEATURES:

- Tea/coffee making facilities
- Mini bar
- In-room movies (pay to view)
- Internet access (broadband)
- Ironing facilities
- Hair dryer

Room serviced daily



From **\$110** PER ROOM PER NIGHT\*

1 APR – 30 SEP 11	ADULTS	1 NT	3 NTS	5 NTS
Standard	1 to 2	164	492	820
Superior	1 to 2	174	522	870
1 OCT – 9 NOV, 14 NOV 11 – 26 FEB 12, 2 – 31 MAR 12	ADULTS	1 NT	3 NTS	5 NTS
Standard	1 to 2	183	549	915
Superior	1 to 2	194	582	970

Other prices apply 1 Oct 10 – 31 Mar 11, 10 – 13 Nov 11, 27 Feb – 1 Mar 12. Room and breakfast prices also available.

**Children** 0 to 15 years – up to 2 children stay free when sharing with adults and using existing bedding.

**Max capacity** Standard – 3, Superior – 2. **MERLST**

### TRAVELPOINT BONUS

FREE Night Offer: Stay 3 nights in a Standard room, pay for 2, valid 1 Apr – 31 Aug 11.

Late check-out of 1pm (subject to availability), valid 1 Jun – 31 Aug 11. Offers not combinable.

## Peppers Seaport Hotel ★★★★★



Waterfront accommodation, just five minutes from the centre of Launceston, at the heart of Launceston's Old Seaport Dock area.

City Centre 1km  
Map page 30 Ref. 1

28 Seaport Boulevard, Launceston

### PROPERTY FEATURES:

- Restaurant
- Bar
- Café
- Laundry/dry cleaning service
- Massage facilities

### ACCOMMODATION FEATURES:

- Air-conditioning
- Balcony (Suites only)
- Tea/coffee making facilities
- Mini bar
- Cable TV
- Ironing facilities
- Hair dryer

Room serviced daily

From **\$219** PER ROOM PER NIGHT\*

1 OCT 10 – 31 MAR 11	ADULTS	1 NT	3 NTS	5 NTS
Standard City View Room	1 to 2	261	783	1305
Standard River View Room	1 to 2	291	873	1455
1 APR – 30 SEP 11	ADULTS	1 NT	3 NTS	5 NTS
Standard City View Room	1 to 2	219	657	1095
Standard River View Room	1 to 2	239	717	1195
1 OCT 11 – 9 FEB, 12 – 28 FEB, 1 – 31 MAR 12	ADULTS	1 NT	3 NTS	5 NTS
Standard City View Room	1 to 2	269	807	1345
Standard River View Room	1 to 2	289	867	1445

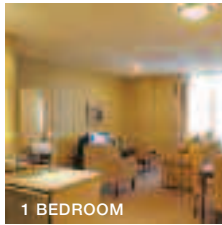
Other prices apply 10 – 11 Feb, 29 Feb 12. City and River View Suite prices also available.

**Children** 0 to 12 years – free when sharing with an adult and using existing bedding.

**Max capacity** 2.

**PEPLST**

## Quest Launceston ★★★★★



A magnificently restored building centrally located and close to restaurants, shopping and only minutes from Cataract Gorge and Boag's Brewery.

City Centre 200m  
Map page 30 Ref. 4

16 Paterson Street, Launceston

### PROPERTY FEATURES:

- DVD library
- Guest laundry
- Internet access (broadband)
- Non smoking
- Laundry/dry cleaning service

### ACCOMMODATION FEATURES:

- Air-conditioning
- CD/DVD player
- Safe
- Mini bar
- Tea/coffee making facilities
- Limited cooking facilities (Hotel Studios)
- Kitchen with microwave & dishwasher (1 & 2 Bedrooms)
- Laundry (1 & 2 Bedrooms)
- In-room movies (free)
- Ironing facilities
- Washer/dryer (Hotel Studios)

Room serviced daily (except Sunday and public holidays)



From **\$153** PER ROOM PER NIGHT\*

1 OCT 10 – 31 MAR 11	ADULTS	1 NT	3 NTS	5 NTS
Hotel Studio	1 to 2	197	591	985
1 Bedroom	1 to 2	221	663	1105
1 APR – 8 MAY, 1 OCT 11 – 31 MAR 12	ADULTS	1 NT	3 NTS	5 NTS
Hotel Studio	1 to 2	199	597	995
1 Bedroom	1 to 2	221	663	1105
2 Bedroom	1 to 4	339	1017	1695
9 MAY – 30 SEP 11	ADULTS	1 NT	3 NTS	5 NTS
Hotel Studio	1 to 2	153	459	765
1 Bedroom	1 to 2	171	513	850
2 Bedroom	1 to 4	247	741	1235

**Children** 0 to 11 years – free when sharing with 2 adults and using existing bedding.

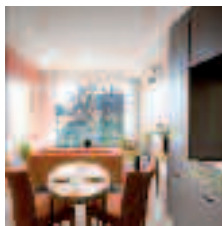
**Max capacity** Hotel Studio – 2, 1 Bedroom – 3, 2 Bedroom – 5.

**QULLST**

### TRAVELPOINT EXCLUSIVE

FREE bottle of wine for stays of 3 nights or more in a Hotel Studio, valid 1 – 31 Oct 11.

## The Sebel Launceston ★★★★★



Boutique, suite style accommodation perfectly positioned in the heart of Launceston, close to all major attractions.

City Centre 200m  
Map page 30 Ref. 3

Corner St John and William Streets, Launceston

### PROPERTY FEATURES:

- 24 hour reception
- Restaurant
- Room service (24 hour)
- Gymnasium
- Guest laundry
- Parking (undercover)

### ACCOMMODATION FEATURES:

- Air-conditioning
- Balcony
- Tea/coffee making facilities
- Limited cooking facilities
- Cable TV
- CD/DVD player
- Internet access (broadband)
- Ironing facilities
- Mini bar

Apartment serviced daily



From **\$239** PER ROOM PER NIGHT\*

1 OCT – 11 NOV, 15 NOV 10 – 10 FEB, 14 – 22 FEB, 25 FEB – 31 MAR 11	ADULTS	1 NT	3 NTS	5 NTS
1 Bedroom Deluxe Suite	1 to 2	247	741	1235
1 Bedroom Spa Suite	1 to 2	277	831	1385
1 – 4 APR, 8 APR – 4 MAY, 8 MAY – 10 NOV, 14 NOV 11 – 9 FEB, 13 – 27 FEB, 2 – 31 MAR 12	ADULTS	1 NT	3 NTS	5 NTS
1 Bedroom Deluxe Suite	1 to 2	239	717	1195
1 Bedroom Spa Suite	1 to 2	269	807	1345
5 – 7 MAY 11, 10 – 12 FEB, 28 FEB – 1 MAR 12	ADULTS	2 NTS	3 NTS	5 NTS
1 Bedroom Deluxe Suite	1 to 2	764	1146	N/A
1 Bedroom Spa Suite	1 to 2	824	1236	N/A

Other prices apply 12 – 14 Nov 10, 11 – 13 Feb, 23 – 24 Feb, 5 – 7 Apr, 11 – 13 Nov 11.

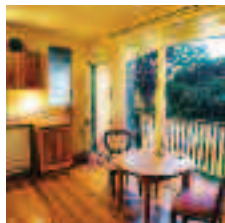
**Includes** Full breakfast daily.

**Children** 0 to 11 years – free when sharing with an adult and using existing bedding, room only. Cot free of charge.

**Max capacity** 3.

**SEBLST**

## Strathesk House ◆◆◆◆



A grand old mansion restored to its former glory, filled with period bric-a-brac, memorabilia and old books with every home comfort and modern amenity.

City Centre 500m  
Map page 30 Ref. 9

18 York Street, Launceston

### PROPERTY FEATURES:

- 24 hour reception
- Pool (heated – open summer only)
- Barbecue ▪ Fireplace ▪ DVD library
- Internet access (wireless)
- Parking

### ACCOMMODATION FEATURES:

- Air-conditioning ▪ Balcony (Violet's)
- Fireplace (except Kathleen's)
- Heating ▪ Electric blankets ▪ Spa bath
- Kitchen with microwave ▪ Washer/dryer
- Dishwasher (Violet's) ▪ Ironing facilities
- Internet access (wireless and broadband)
- Hair dryer ▪ All rooms non smoking

Apartment serviced daily

From **\$168** PER ROOM PER NIGHT\*

1 OCT 10 – 31 MAR 11	ADULTS	1 NT	3 NTS	5 NTS
Coach House/Cottage	2	210	630	1050
1 APR 11 – 31 MAR 12 <sup>^</sup>	ADULTS	1 NT	3 NTS	5 NTS
Deluxe	2	210	630	840

Sole use prices also available.

**Includes** Full breakfast daily.

**Children** 0 to 14 years – not catered for.

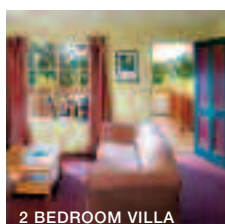
**Max capacity** 2.

STRJLST

### TRAVELPOINT BONUS

<sup>^</sup> FREE Night Offer: Stay 5 nights, pay for 4.  
(5 night price includes 1 free night)

## Country Club Villas, Prospect Vale ★★☆☆



2 BEDROOM VILLA

Private self-contained villas located adjacent to the Country Club Tasmania complex. All rooms are spacious and provide relaxing views.

Launceston 14km  
Map page 30 Ref. 17

Casino Rise, Prospect Vale

### PROPERTY FEATURES:

- Restaurants (2) ▪ Bottleshop
- Gymnasium ▪ Tennis court
- Massage facilities
- Access to all Country Club Tasmania facilities ▪ Parking
- Courtesy shuttle between Country Club Villas and main complex

### ACCOMMODATION FEATURES:

- Air-conditioning ▪ Mini bar ▪ Cable TV
- Kitchen with microwave
- Internet access (broadband)

Room serviced daily



From **\$127** PER ROOM PER NIGHT\*

1 OCT 10 – 20 DEC 10	ADULTS	1 NT	3 NTS	5 NTS
1 Bedroom Villa	1 to 2	127	381	635
2 Bedroom Villa	1 to 4	167	501	835

21 DEC 10 – 4 MAY, 14 MAY – 30 SEP 11	ADULTS	1 NT	3 NTS	5 NTS
1 Bedroom Villa	1 to 2	141	423	705
2 Bedroom Villa	1 to 4	177	531	885

1 OCT 11 – 20 DEC 11, 4 JAN – 9 FEB, 11 – 20 FEB, 23 FEB – 31 MAR 12	ADULTS	1 NT	3 NTS	5 NTS
1 Bedroom Villa	1 to 2	145	435	725
2 Bedroom Villa	1 to 4	185	555	925

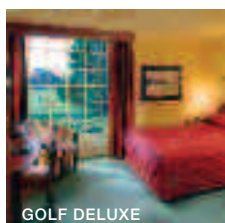
Other prices apply 5 – 13 May, 29 Dec 11 – 3 Jan 12, 10 Feb, 21 – 22 Feb 12. 3 Bedroom and Villa Suite prices also available.

**Children** 0 to 14 years – free when sharing with an adult and using existing bedding. Cot free of charge.

**Max capacity** 1 Bedroom Villa/2 Bedroom Villa – 4,  
3 Bedroom Villa – 6.

CCVLST

## Country Club Tasmania, Prospect Vale ★★☆☆☆



GOLF DELUXE

Surrounded by natural bush, parklands, lakes and an international standard 18 hole championship golf course and just a short drive from Launceston.

Launceston 14km  
Map page 30 Ref. 16

Country Club Avenue, Prospect Vale

### PROPERTY FEATURES:

- 24 hour reception ▪ Restaurants (3)
- Bars (4) ▪ Room service (24 hour)
- Casino ▪ Library ▪ Golf course (18 hole)
- Pool (heated indoor) ▪ Sauna ▪ Spa
- Horse riding ▪ Gymnasium
- Squash court ▪ Tennis court
- Massage facilities ▪ Parking

### ACCOMMODATION FEATURES:

- Air-conditioning ▪ Mini bar ▪ Cable TV
- Tea/coffee making facilities
- Internet access (broadband)

Room serviced daily



From **\$176** PER ROOM PER NIGHT\*

1 OCT 10 – 4 MAY 11, 14 MAY – 28 DEC 11, 4 JAN – 9 FEB, 11 – 20 FEB, 23 FEB – 31 MAR 12	ADULTS	1 NT	3 NTS	5 NTS
Deluxe	1 to 2	176	528	880
Golf Deluxe	1 to 2	187	561	935
Manor Suite	1 to 2	256	768	1280

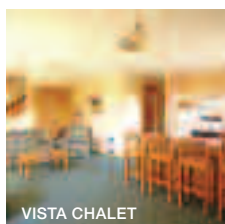
5 – 13 MAY, 29 DEC 11 – 3 JAN, 10 FEB, 21 – 22 FEB 12	ADULTS	1 NT	3 NTS	5 NTS
Deluxe	1 to 2	440	1320	2200
Golf Deluxe	1 to 2	467	1401	2335
Manor Suite	1 to 2	640	1920	3200

**Children** 0 to 14 years – free when sharing with an adult and using existing bedding. Cot free of charge.

**Max capacity** Deluxe/Golf Deluxe – 3, Manor Suite – 2.

COULST

## Aspect Tamar Valley Resort, Grindelwald ◆◆◆◆



VISTA CHALET

Hotel and two bedroom self-contained chalets in the heart of the exotic Tamar Valley wine region.

Shop on-site  
Launceston 17km  
Map page 7 Ref. 10

7 Waldhorn Drive, Grindelwald

### PROPERTY FEATURES:

- Restaurant ▪ Golf course (9 hole)
- Pool (heated indoor)
- Spa ▪ Sauna ▪ Barbecue area
- Gymnasium ▪ Mini golf
- Tennis courts (2 – floodlit)
- Parking

### ACCOMMODATION FEATURES:

- Heating ▪ Tea/coffee making facilities
- Balcony (Garden Suites)
- Kitchen with microwave (Chalets)

Room serviced daily  
Chalet serviced weekly



From **\$129** PER ROOM PER NIGHT\*

1 OCT 10 – 31 MAR 12	ADULTS	1 NT	3 NTS	5 NTS
Garden Suite	1 to 2	129	387	645
Hideaway Chalet	1 to 2	156	468	780
Vista Chalet	1 to 2	176	528	880
Alpine Chalet	1 to 2	196	588	980

Sunset Villa prices also available.

**Children** 0 to 2 years – cot/bed charge payable direct.  
3 to 12 years – \$15 per child per night.

**Max capacity** Garden Suite – 3, Hideaway Chalet – 4,  
Vista Chalet – 6, Alpine Chalet – 7.

TMRLST

### TRAVELPOINT BONUS

FREE buffet breakfast daily for stays of 5 nights or more.

# Beyond Launceston

## Rosevears Vineyard Retreat, Rosevears ★★★★★



Located in the heart of Tasmania's premier wine route, offering contemporary accommodation with spectacular views.

Town Centre 8km  
Map page 7 Ref. 11

1A Waldhorn Drive, Rosevears

### PROPERTY FEATURES:

- Winery and cellar door
- Restaurant ▪ Barbecue area
- Dry cleaning service ▪ Parking

### ACCOMMODATION FEATURES:

- Air-conditioning
- Balcony (except Studios)
- Limited cooking facilities with microwave
- Mini bar ▪ Cable TV
- CD/DVD player ▪ Bathrobes
- Ironing facilities ▪ Hair dryer
- Barbecue (except Studios)
- All rooms non smoking

Room serviced daily

From **\$144** PER ROOM PER NIGHT\*

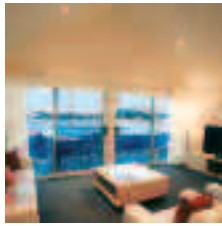
1 OCT 10 – 30 APR 11, 1 OCT 11 – 31 MAR 12	ADULTS	1 NT	3 NTS	5 NTS
Studio	1 to 2	162	486	810
1 Bedroom	1 to 2	225	675	1125
1 Bedroom Spa	1 to 2	252	756	1260
2 Bedroom	1 to 4	315	945	1575
1 MAY – 30 SEP 11	ADULTS	1 NT	3 NTS	5 NTS
Studio	1 to 2	144	432	720
1 Bedroom	1 to 2	200	600	1000
1 Bedroom Spa	1 to 2	224	672	1120
2 Bedroom	1 to 4	280	840	1400

**Children** 0 to 2 years – cot free of charge.  
3 to 14 years – adult prices apply.

**Max capacity** Studio/1 Bedroom/1 Bedroom Spa – 2,  
2 Bedroom – 4.

**ROSLST**

## Peppers York Cove, George Town ◆◆◆◆◆



Nestled within the historic seaside hamlet of George Town on the Tamar River, this premium waterfront resort has an unforgettable array of experiences.

Town Centre 1km  
Map page 7 Ref. 12

1 Adelaide Street, George Town

### PROPERTY FEATURES:

- Restaurant ▪ Bar
- Pool (heated) ▪ Spa
- Gymnasium ▪ Parking

### ACCOMMODATION FEATURES:

- Air-conditioning ▪ Mini bar ▪ Cable TV
- Balcony (except Deluxe Hotels)
- Kitchen with microwave and dishwasher (Apartments)
- Internet access (wireless) ▪ Hair dryer
- Washer/dryer (Apartments)
- Ironing facilities (Apartments)
- Spa bath (Deluxe Spa Room)
- All rooms non smoking

Room serviced daily

From **\$179** PER ROOM PER NIGHT\*

1 OCT 10 – 31 MAR 11	ADULTS	1 NT	3 NTS	5 NTS
Deluxe Hotel	1 to 2	179	537	895
Deluxe Room	1 to 2	199	597	995
Deluxe Spa	1 to 2	219	657	1095
1 Bedroom	1 to 2	229	687	1145
2 Bedroom	1 to 4	349	1047	1745
3 Bedroom	1 to 6	479	1437	2395
1 APR 11 – 31 MAR 12	ADULTS	1 NT	3 NTS	5 NTS
Deluxe Hotel	1 to 2	260	780	1300
Deluxe Room	1 to 2	280	840	1400
Deluxe Spa	1 to 2	300	900	1500
1 Bedroom	1 to 2	310	930	1550
2 Bedroom	1 to 4	430	1290	2150
3 Bedroom	1 to 6	560	1680	2800

**Children** 0 to 12 years – free when sharing with an adult and using existing bedding.

**Max capacity** Deluxe Hotel – 2, Deluxe Room/Deluxe Spa/  
1 Bedroom – 3, 2 Bedroom – 5, 3 Bedroom – 7.

**PYCTAS**

## Barnbogle Dunes Golf Links, Bridport ◆◆◆◆◆



427 Waterhouse Road, Bridport

Barnbogle Dunes Golf Links is a traditional 18 hole golf course located on the pristine coastline of North East Tasmania. The golf course has received global accolades and is the ultimate destination for golfers of all abilities.

Enjoy fresh Tasmanian produce as well as local and Australian wines in the clubhouse. The two bedroom cottages are a short stroll from the clubhouse and first tee and feature a deck boasting spectacular views of the course and coastline.

### PROPERTY FEATURES:

- Golf course (18 hole) ▪ Restaurant ▪ Bar ▪ Guest laundry

### ACCOMMODATION FEATURES:

- Balcony with ocean views ▪ Air-conditioning ▪ Ironing facilities
- Tea/coffee making facilities ▪ Hair dryer ▪ All rooms non smoking

Room serviced daily

Beach 500m  
Town Centre 7km  
Map page 7 Ref. 15



From **\$140** PER ROOM PER NIGHT\*



1 OCT 10 – 30 APR 11	ADULTS	2 NTS	5 NTS	7 NTS
Barnbogle Cottage	1	280	700	980
	2	320	800	1120
	3	360	900	1260
	4	400	1000	1400
1 MAY – 31 OCT 11	ADULTS	1 NT	3 NTS	5 NTS
Barnbogle Cottage	1	150	450	750
	2	170	510	850
	3	190	570	950
	4	210	630	1050
1 NOV 11 – 31 MAR 12	ADULTS	2 NTS	5 NTS	7 NTS
Barnbogle Cottage	1	300	750	1050
	2	340	850	1190
	3	380	950	1330
	4	420	1050	1470

1 night stay available 1 – 31 Oct 10.

**Children** 0 to 11 years – free when sharing with an adult and using existing bedding.

**Max capacity** 4.

**BARTAS**

## Quamby Estate, Hagley ◆◆◆◆◆



DELUXE

The homestead offers unique accommodation set in 64 hectares of English-style parkland, just 20 minutes drive from Launceston.

Town Centre 3.5km  
Map page 7 Ref. 13

1145 Westwood Road, Hagley

### PROPERTY FEATURES:

- Restaurant
- Golf course (9 hole)
- Tennis court
- Guest lounge
- Internet access (wireless)
- Library
- DVD library
- Billiards table and board games
- Extensive lawns and gardens
- Parking

### ACCOMMODATION FEATURES:

- Hair dryer
  - Private ensuite
- Room serviced daily

From **\$262** PER ROOM PER NIGHT\*

Period	ADULTS	1 NT	3 NTS	5 NTS
1 OCT – 30 NOV 10				
Superior	2	250	750	1250
Deluxe	2	320	960	1600
1 DEC 10 – 30 APR 11				
Superior	2	280	840	1400
Deluxe	2	350	1050	1750
1 MAY – 30 NOV 11				
Superior	2	262	786	1310
Deluxe	2	336	1008	1680
1 DEC 11 – 31 MAR 12				
Superior	2	294	882	1470
Deluxe	2	368	1104	1840

**Includes** Light breakfast daily.

**Children** 0 to 12 years – not catered for.

**Max capacity** 2.

QETLST

## Peppers Calstock, Deloraine ◆◆◆◆◆



This 19th century Georgian mansion features early Victorian furnishings, complementing the grand style of this historic retreat.

Town Centre 1km  
Map page 7 Ref. 14

Highland Lakes Road, Deloraine

### PROPERTY FEATURES:

- Restaurant
- Bar
- Guest lounge
- Games room
- Library
- Massage facilities
- Parking

### ACCOMMODATION FEATURES:

- Heating
  - Spa bath (King Spa)
  - Ironing facilities
  - Hair dryer
- Room serviced daily

From **\$485** PER ROOM PER NIGHT\*

Period	ADULTS	1 NT	2 NTS	5 NTS
1 OCT 10 – 31 JAN, 1 – 31 MAR 11				
Garden	1 to 2	485	970	2425
Deluxe	1 to 2	535	1070	2675
Spa King	1 to 2	655	1310	3275
1 APR 11 – 31 MAR 12				
Garden	1 to 2	530	1060	2650
Deluxe	1 to 2	635	1270	3175
Spa King	1 to 2	710	1420	3550

2 night minimum stay applies 12 – 14 Mar, 22 – 26 Apr, 10 – 13 Jun 11, 9 – 12 Mar 12.

**Includes** Full breakfast and 3 course set menu dinner daily.

**Children** 0 to 15 years – not catered for.

**Max capacity** 2.

PEPTAS

## Launceston Highlights



Tour the highlights of Launceston and discover the Victorian streetscapes and historical architecture. Follow the tranquil yet spectacular Tamar River amongst vineyards, bird havens, country houses and fruit orchards. Visit a winery and taste from a selection of fine Tamar Valley wines.

Spend time at the picturesque Grindelwald Swiss Village and explore the historic village of Evandale, host to the Penny Farthing bike race.

### INCLUDES:

- Expert driver/guide and commentary
- Wine and cheese tasting
- Modern coach travel
- Return transfers from Launceston accommodation

**Departs:** Mon to Sat from Launceston at 1:30pm (Apr – May, Sep – Mar)

**Returns:** 5pm

PRICE PER PERSON:	1 OCT 10 – 31 MAR 11	1 APR 11 – 31 MAR 12
Adult	\$71	\$74
Child 5-15 years	\$40	\$37

EXPERIENCE TASMANIA

EXPBBA

## Trowunna Wildlife Park



Trowunna Wildlife Park at Mole Creek is situated on 60 acres of natural bushland and is home to a range of native Tasmanian wildlife, birds, insects, reptiles and animals. On this personalised interactive tour you will learn from the passionate keepers and get close to some of the special animals of Trowunna. You can cuddle a wombat and watch the Tasmanian devil feeding.

The keepers will also provide you with feed so you can hand feed the free-ranging kangaroos and wallabies.

**Open:** 9am – 5pm daily except Christmas Day

### PRICE PER PERSON:

Adult	\$18
Child 4-14 years	\$9
Family 2 adults & up to 3 children	\$55

TROWUNNA WILDLIFE PARK

TROTAS

## Ben Lomond Descent



Experience the challenge of one of Tasmania's ultimate mountain bike descents with a total drop of 1,050 vertical metres.

Starting in the alpine ski village at 1,450m, this trip takes you down the spectacular Jacobs Ladder road before connecting to old four wheel drive tracks through the eucalypt forests. There is also a single-track section, part of the annual Ben Lomond Descent multi-sport race. Continue on fire trails and other single tracks to the finishing point on Blessington Road at 400m.

### INCLUDES:

- Use of bike and helmet
- Qualified local guide
- Lunch
- Return transfers from Launceston

**Departs:** Daily from Launceston at 9am

**Returns:** 3pm

### PRICE PER PERSON:

Adult	\$175
Child 10-14 years	\$150

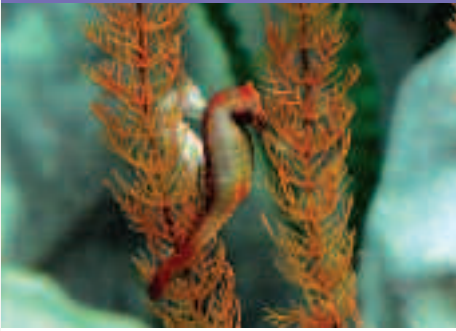
Not suitable for children under 10 years.

MOUNTAIN BIKE TASMANIA

MBTLST

# Tours from Launceston and Beyond

## Seahorse World



In the heart of the Tamar Valley at Beauty Point, just 45 minutes drive north of Launceston, Seahorse World brings to light the fascinating life of seahorses. Your personalised, friendly and informative tour offers you a close-up look at their secret world.

Your tour will include a behind the scenes look at a working seahorse farm, the Cave of the Seahorse, Neptunes Nursery, watch feeding of the fish (on most tours), the Boutique aquarium, hands-on opportunities in the touch pool with other interesting sea creatures and our interpretation and research room. Seahorse World is fully accessibility for people with special needs and also has a coffee shop and an impressive gift shop featuring some of Tasmania's fine art, crafts and souvenirs.

**Open:** 9:30am – 5:30pm daily except Christmas Day

**Tour departs:** Hourly from 10am – 3pm (May – Aug)  
Regularly from 9:30am – 3:30pm (Sep – Apr)

**Tour duration:** 45 minutes

**PRICE:**

Adult	\$20
Child 4-16 years	\$10
Family 2 adults and up to 3 children	\$50

SEAHORSE WORLD

SEALST

## Platypus House



Platypus House located at Beauty Point, offers a once in a lifetime opportunity to watch both live Tasmanian platypuses and echidnas in daylight conditions and undercover. Visitors are guaranteed to see both these spectacular egg laying mammals during a 35 minute guided tour of platypus ponds and a walk through the echidna garden to see echidnas foraging in a bushland setting.

Gain insight into their habits by spending time in the Interpretation room, featuring the biology of platypuses and echidnas. Enjoy a 15 minute film in the theatre. An educational tour which you will remember for years.

**Open:** 9:30am – 3:30pm daily except Christmas Day  
Guided tours depart at regular intervals throughout the day with last tour at 3:30pm.

**PRICE:**

Adult	\$20
Child 4-16 years	\$9
Family 2 adults and up to 3 children	\$49

PLATYPUS HOUSE

PLHLST

## Beaconsfield Mine Heritage Centre



Imagine visiting a place where time stands still, where genuine smiles welcome you – a place where history is alive. Beaconsfield Mine & Heritage Centre captures the essence of life in the Tamar Valley and takes you on a journey through the Tamar's historical past.

Explore the mine rescue display and discover a replica underground mining environment.

Come and play with our history!

**Open:** 9:30am – 4:30pm daily except Christmas Day and Good Friday

**PRICE:**

Adult	\$11
Child 6-15 years	\$4
Family 2 adults and up to 4 children	\$28

BEACONSFIELD MINE & HERITAGE CENTRE BMHLST

## Treetops Adventure



Hollybank Treetops Adventure is unlike any other nature experience. On this unique forest canopy tour you glide through the forest along cables. Receive a bird's eye view of Tasmania's beautiful forests.

The flight is interspersed with seven tree platforms that enable you to pause between rides, share the exhilaration with other riders and take in the beauty of the forest, all without disconnecting. The tour takes three hours, with sections soaring 50 metres above the Pipers River and for distances up to 400 metres.

**Open:** 9am – 5pm daily except Christmas Day

**PRICE:**

Adult	\$100
Child 3-16 years	\$75

Not suitable for children under 3 years.

HOLLYBANK TREETOPS ADVENTURE

HTALST

## Cradle Mountain Day Tour



Journey deep into the Tasmanian forest and awaken your senses to the splendour that is Cradle Mountain. Experience the solitary wilderness of waterfalls, glacial lakes, rainforest, wildlife and the unsurpassed beauty of this World Heritage listed National Park. Spend time at Dove Lake and Waldheim Chalet.

Stop at Ashgrove Cheese farm on the way back to Launceston. Learn about and sample some famous Tasmanian cheese.

**INCLUDES:**

- Expert driver/guide and commentary
- National park fees
- Cheese tasting
- Modern coach travel
- Return transfers from Launceston accommodation

**Departs:** Mon, Wed, Fri, Sun from Launceston at 8:30am

**Returns:** 5pm

**PRICE:**

	1 OCT 10 – 31 MAR 11	1 APR 11 – 31 MAR 12
Adult	\$159	\$164
Child 5-15 years	\$79.50	\$82

EXPERIENCE TASMANIA

EXPBBA

## Cradle Mountain & Cradle Valley



Enjoy a full day discovering the World Heritage Cradle Mountain National Park. Witness a landscape of ancient rainforest, alpine heath lands, icy streams, cascading waterfalls, glacial lakes and a wealth of wildlife. Enjoy the Dove Lake walk or trek higher up to Marion's Lookout. Your guide will help you make the most of your day with a range of walking options to choose from.

**INCLUDES:**

- Experienced guide
- Small group
- Dove Lake walk
- National park fees
- Return transfers from Launceston accommodation

**Departs:** Tue, Wed, Fri, Sun from Launceston at 8am (Oct – Jul)

**Returns:** 7pm

**PRICE:**

Adult	\$120
Student/Pensioner	\$110

Not suitable for children under 16 years.

TOURS TASMANIA

BBBHBA